



EstesRockets.com

PRO SERIES II

9725

BIG DER RED MAX™

AGES
18+



Skill Level

ADVANCED

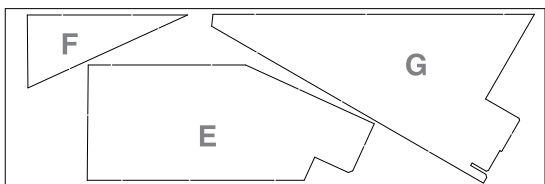
MODEL ROCKET INSTRUCTIONS

KEEP FOR FUTURE REFERENCE

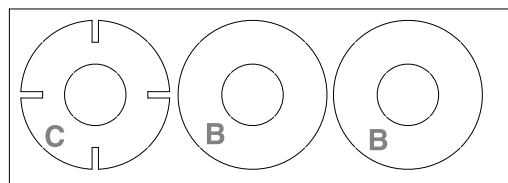
IMPORTANT: Please record date found on decal and keep for future reference. _____

Read all instructions. Make sure you have all parts and supplies. Test fit all parts before applying glue.

SUPPLIES

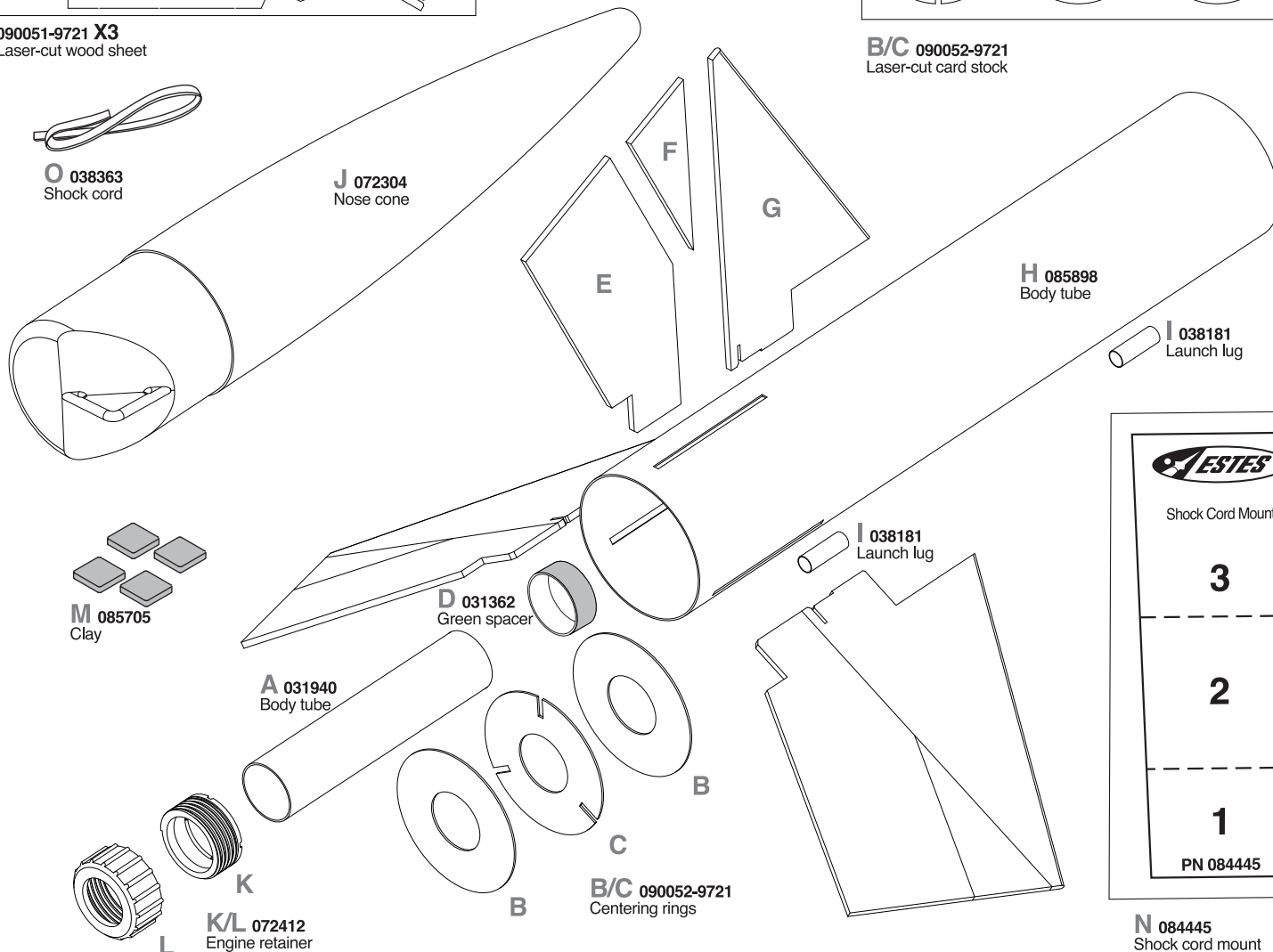


090001A-9720
090001B-9720
Self-stick decals
Not shown
P 035829
Parachute
Not shown

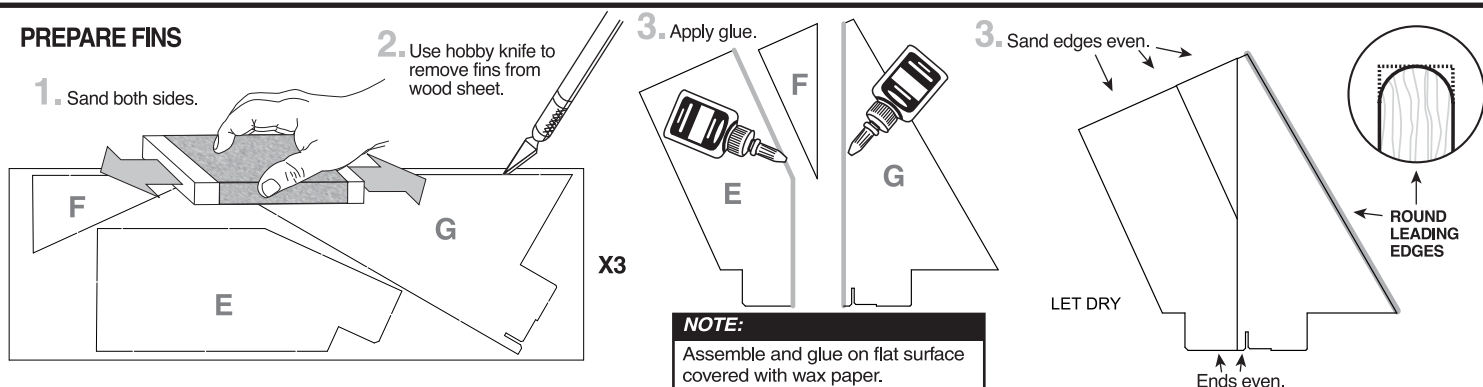


090051-9721 **X3**
Laser-cut wood sheet

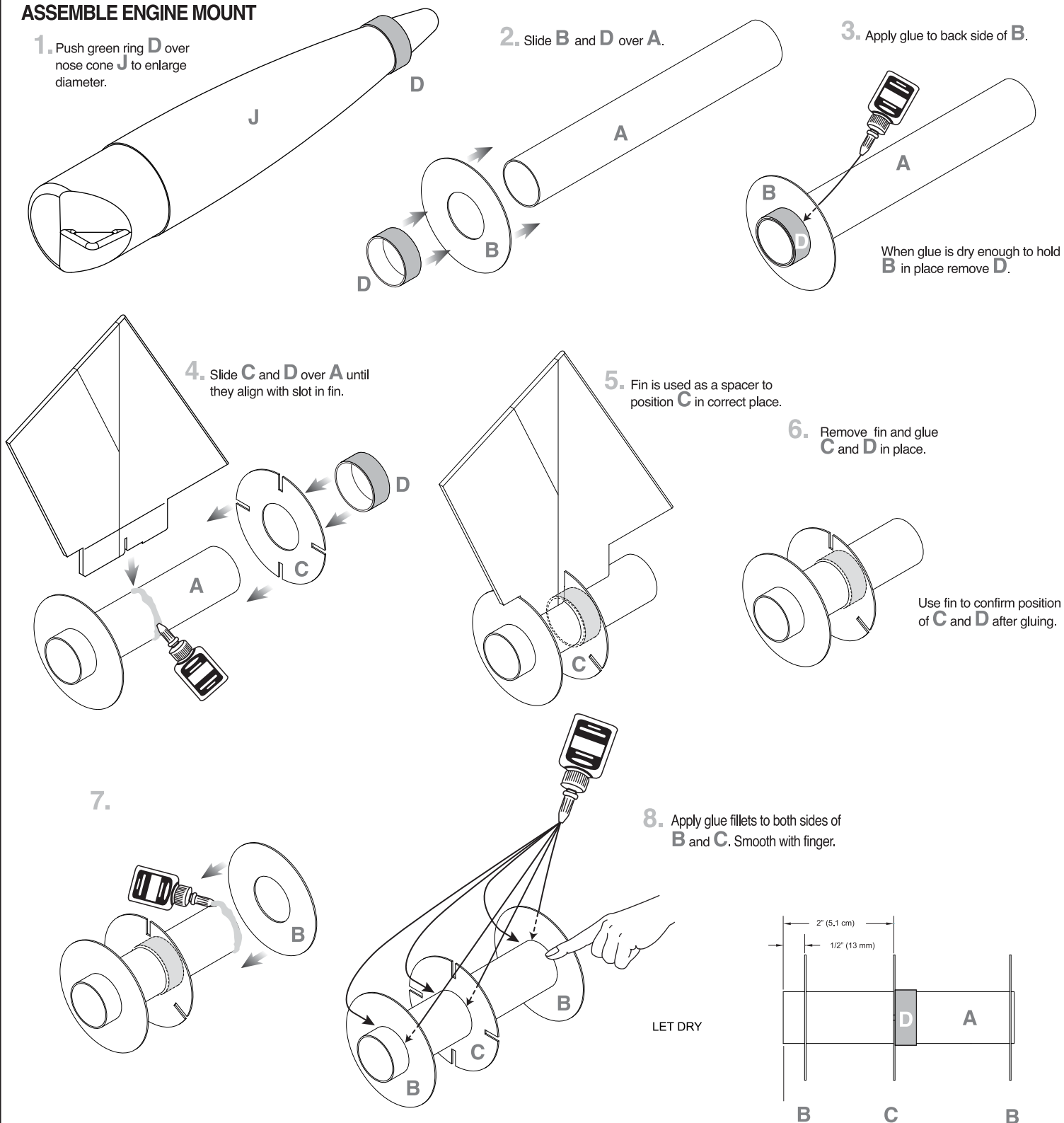
B/C 090052-9721
Laser-cut card stock



PREPARE FINS

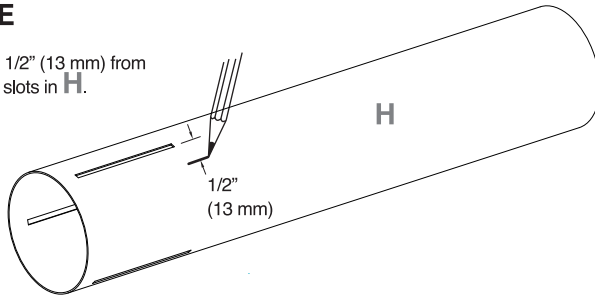


ASSEMBLE ENGINE MOUNT

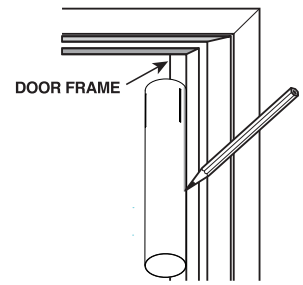


MARK BODY TUBE

1. Make a mark 1/2" (13 mm) from one of the fin slots in **H**.

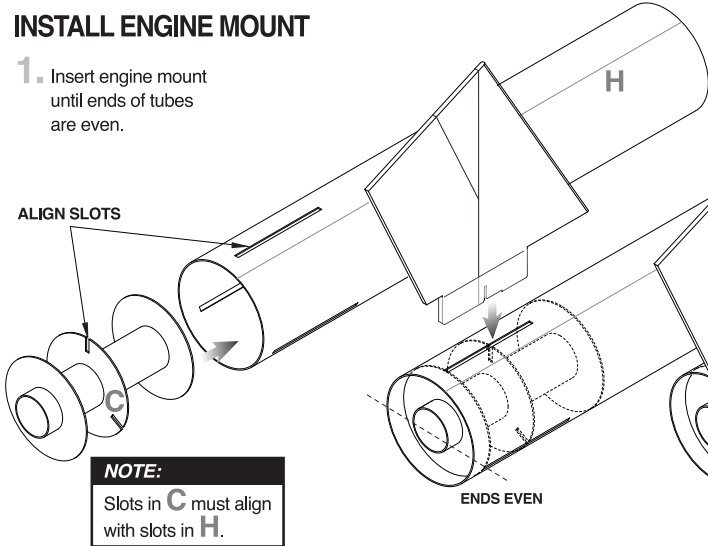


2. Use door frame to extend line to end of tube.



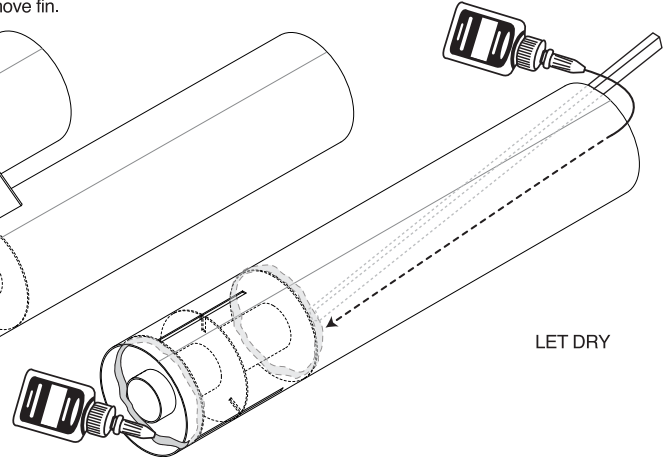
INSTALL ENGINE MOUNT

1. Insert engine mount until ends of tubes are even.



2. Test fit fin in slots of **H**. Slots in **C** must align with slots in **H** for proper fin alignment. Remove fin.

3. Use dowel rod or similar tool to apply glue as indicated.

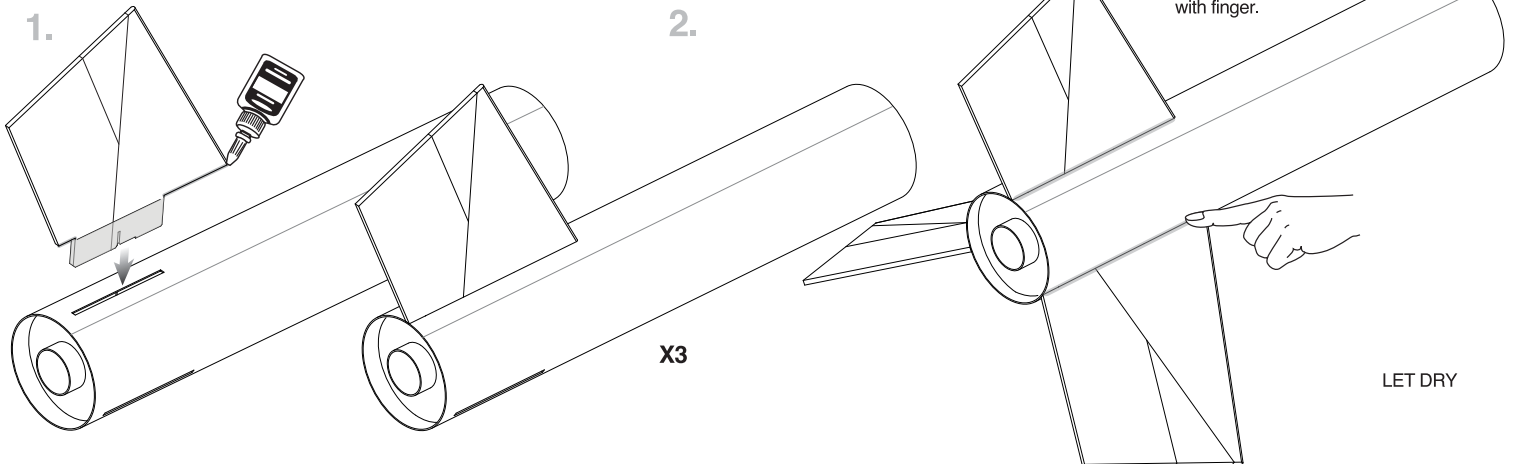


ATTACH FINS

1.

2.

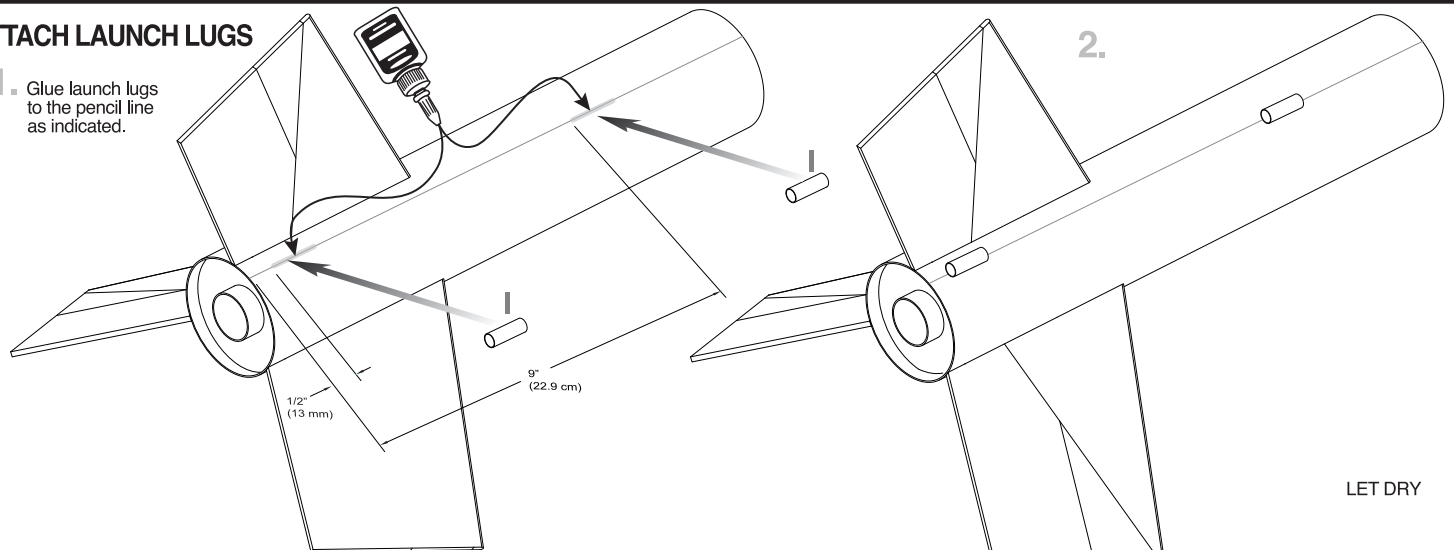
3. Apply glue fillets to all joints. Smooth with finger.



ATTACH LAUNCH LUGS

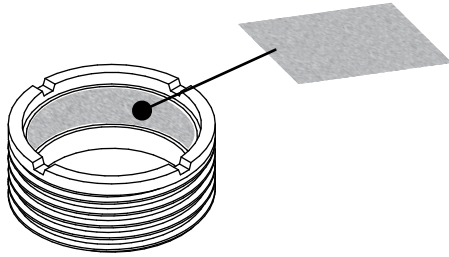
1. Glue launch lugs to the pencil line as indicated.

2.

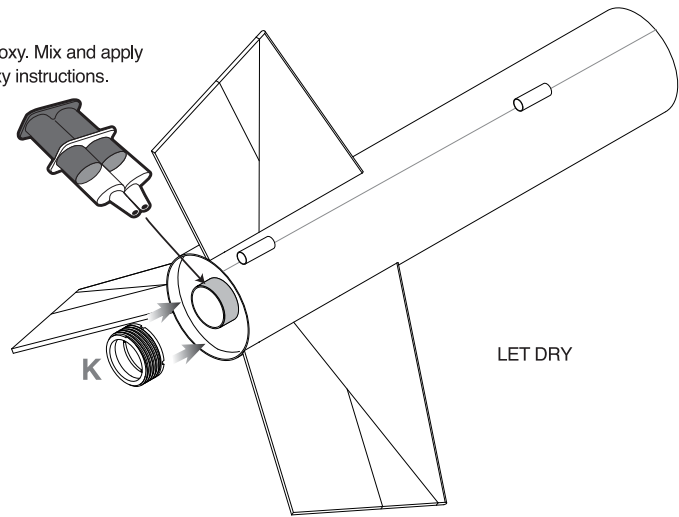


ATTACH ENGINE RETAINER

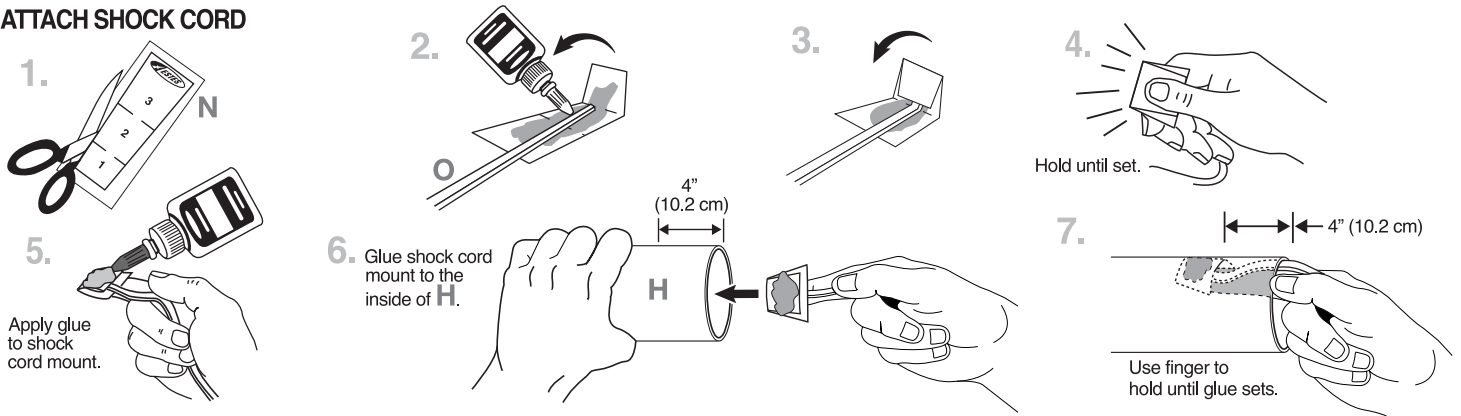
1. Rough up inside surface with sandpaper.



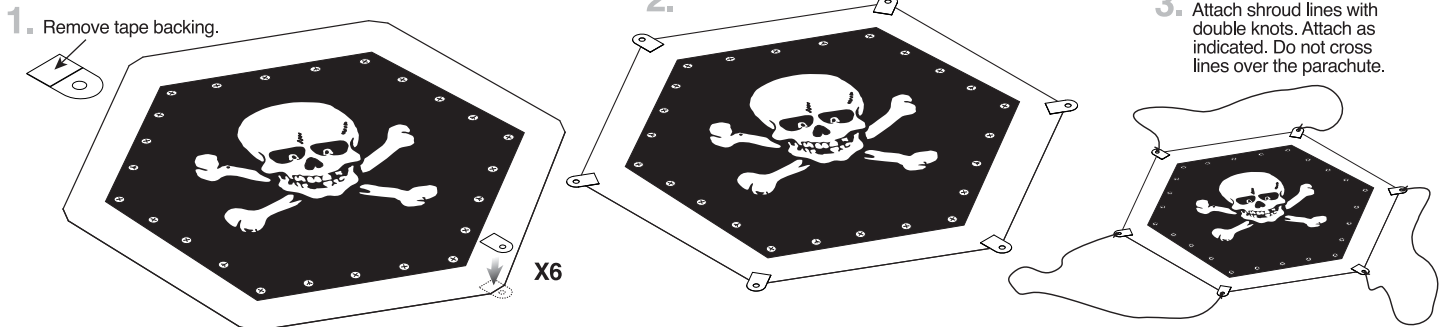
2. Attach **K** with epoxy. Mix and apply according to epoxy instructions.



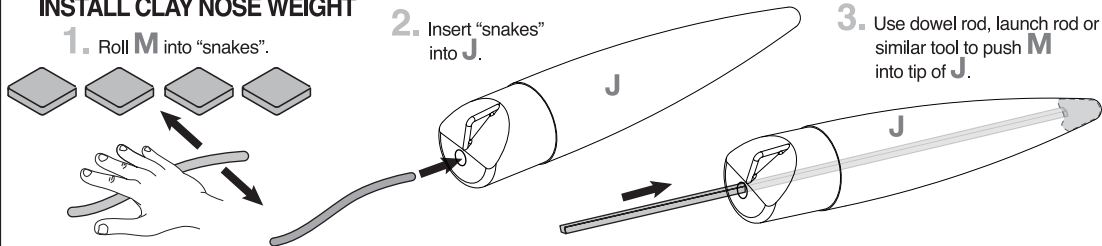
ATTACH SHOCK CORD



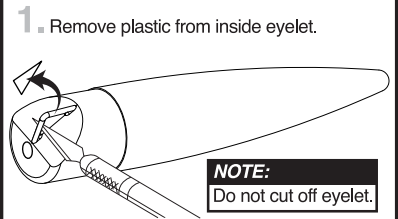
ASSEMBLE PARACHUTE



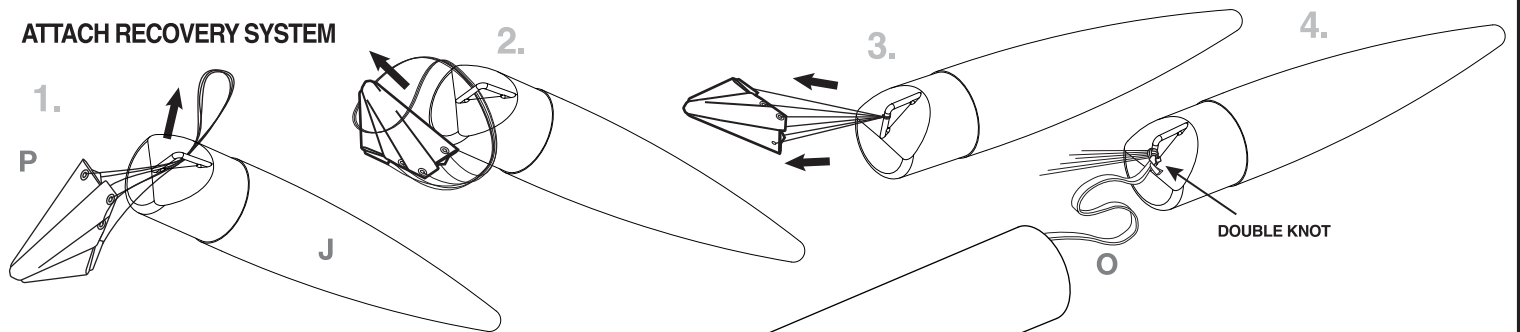
INSTALL CLAY NOSE WEIGHT



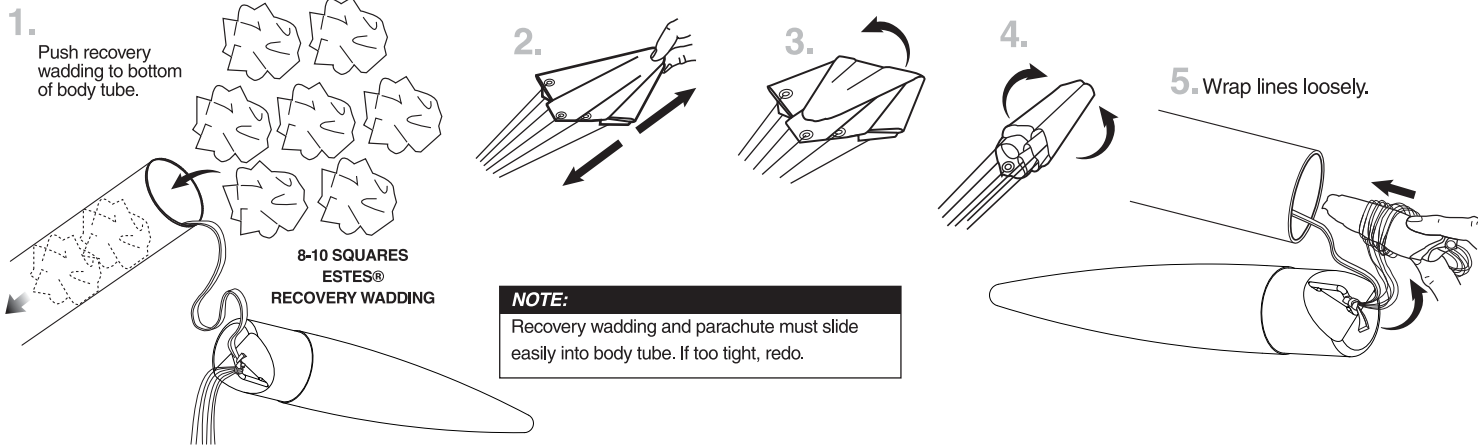
PREPARE NOSE CONE



ATTACH RECOVERY SYSTEM

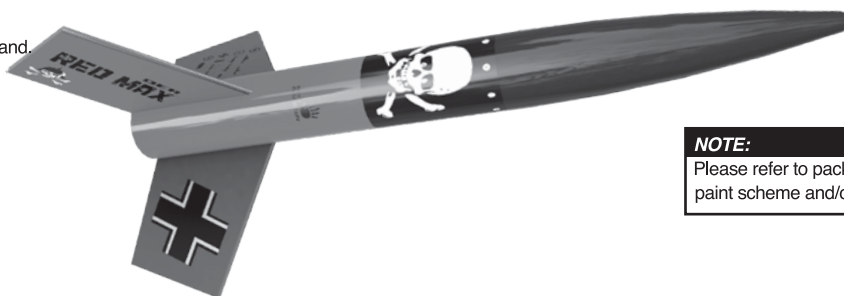


PREPARE FLIGHT RECOVERY



ROCKET FINISHING

Spray rocket with white primer, LET DRY & sand. Repeat until rocket is smooth, then paint. Apply decals after paint is dry.

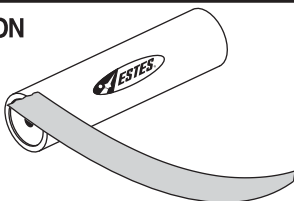


NOTE:

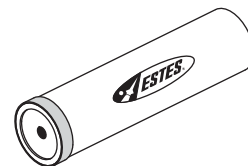
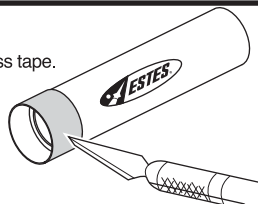
Please refer to packaging for suggested paint scheme and/or decal placement.

PREPARE ENGINE RETENTION

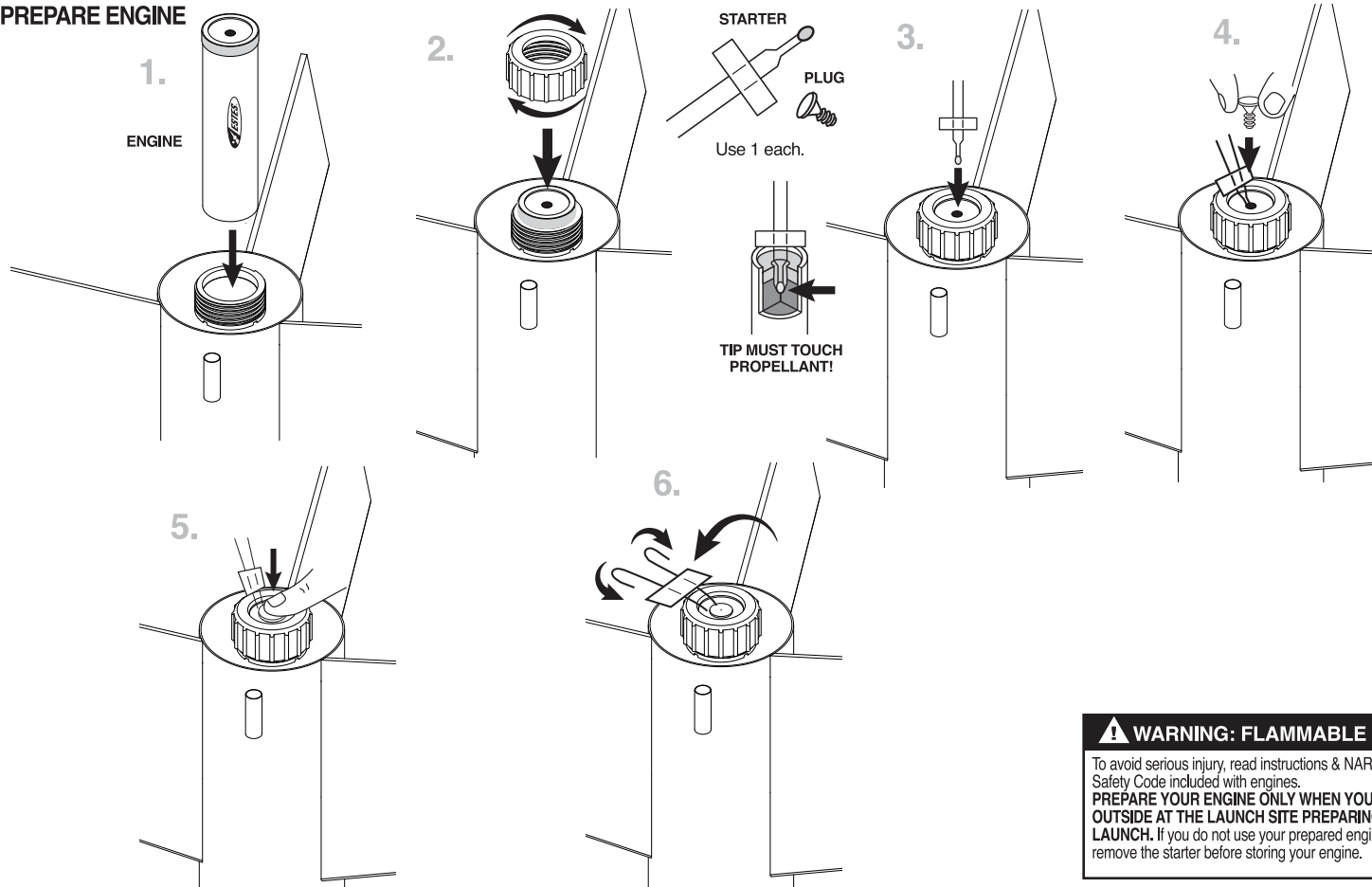
1. Wrap 6 to 8 layers of masking tape over nozzle end of motor. Overlap end of engine by 1/4 inch (6 mm).



2. Trim off excess tape.



PREPARE ENGINE



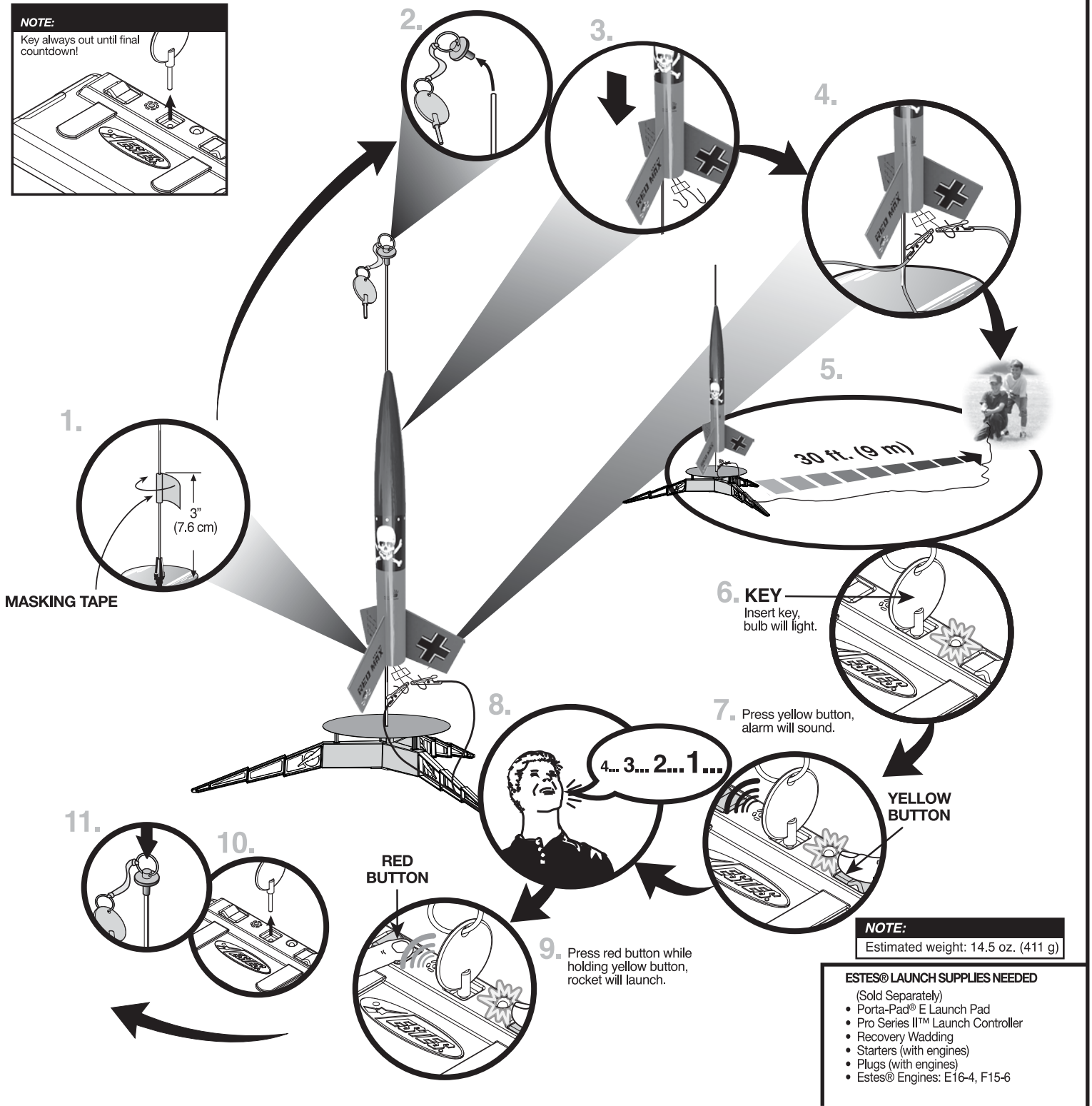
⚠ WARNING: FLAMMABLE

To avoid serious injury, read instructions & NAR Safety Code included with engines.
PREPARE YOUR ENGINE ONLY WHEN YOU ARE OUTSIDE AT THE LAUNCH SITE PREPARING TO LAUNCH. If you do not use your prepared engine, remove the starter before storing your engine.

COUNTDOWN AND LAUNCH

NOTE:

Key always out until final countdown!



PRECAUTIONS



NAR SAFETY CODE



NO DRY GRASS OR WEEDS

PRE-LAUNCH CHECK For safety, never launch a damaged rocket. Check the rocket's body, nose cone and fins. Also, check the engine mount, recovery system and launch lug(s). Repair any damage before launching the rocket.

FLYING YOUR ROCKET Choose a large field (500 ft. [152 m] square) free of dry weeds and brown grass. The larger the launch area, the better your chance of recovering your rocket. Football fields and playgrounds are great. Launch only with little or no wind and good visibility. Always follow the National Association of Rocketry SAFETY CODE (enclosed).

MISFIRES TAKE THE KEY OUT OF THE CONTROLLER. WAIT ONE MINUTE BEFORE GOING NEAR THE ROCKET. Disconnect the micro-clips and remove the engine. Take the plug and starter out of the engine. A burned starter means the starter tip was not touching engine propellant. Install a new starter; be sure the tip is touching propellant inside the engine. Push the plug in place. Repeat steps under Countdown and Launch.