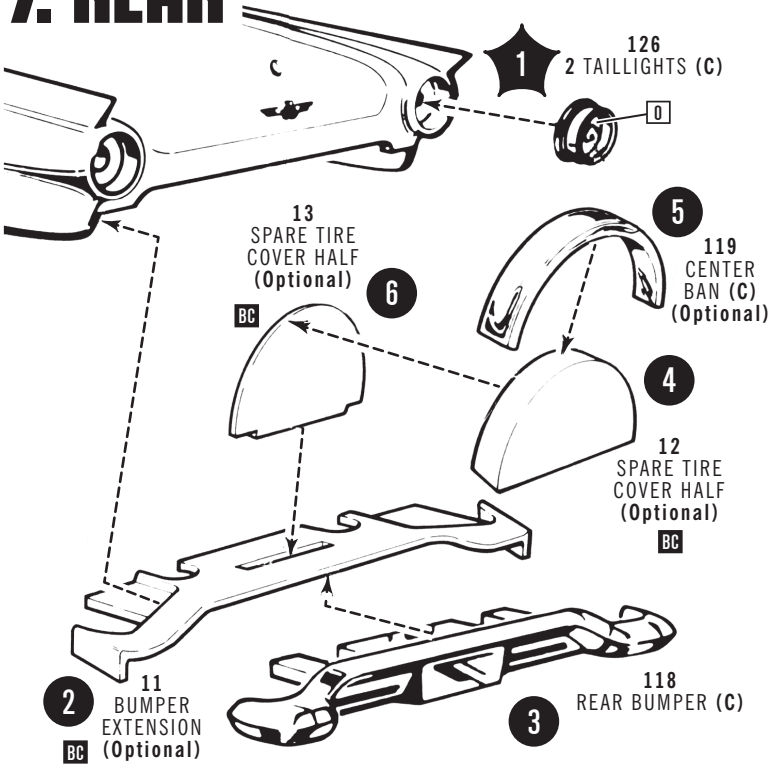
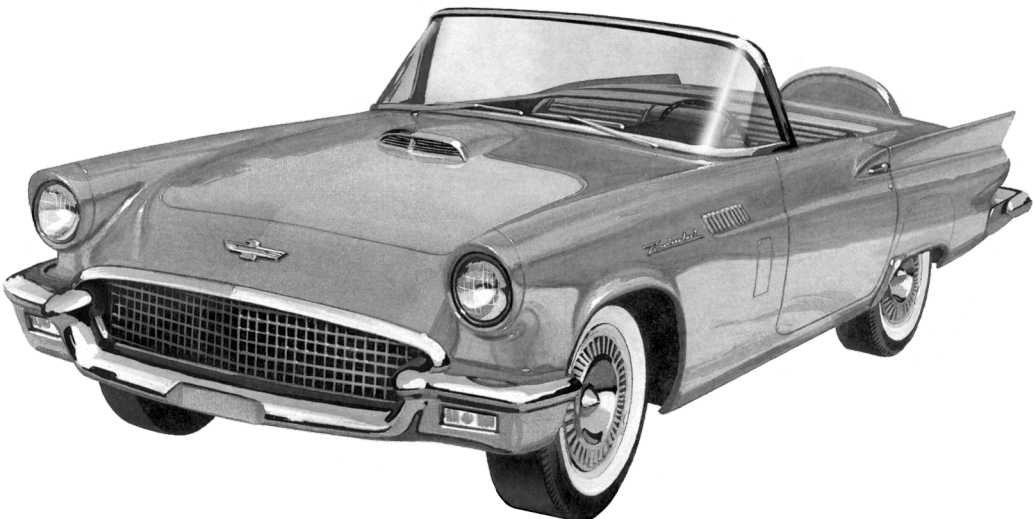
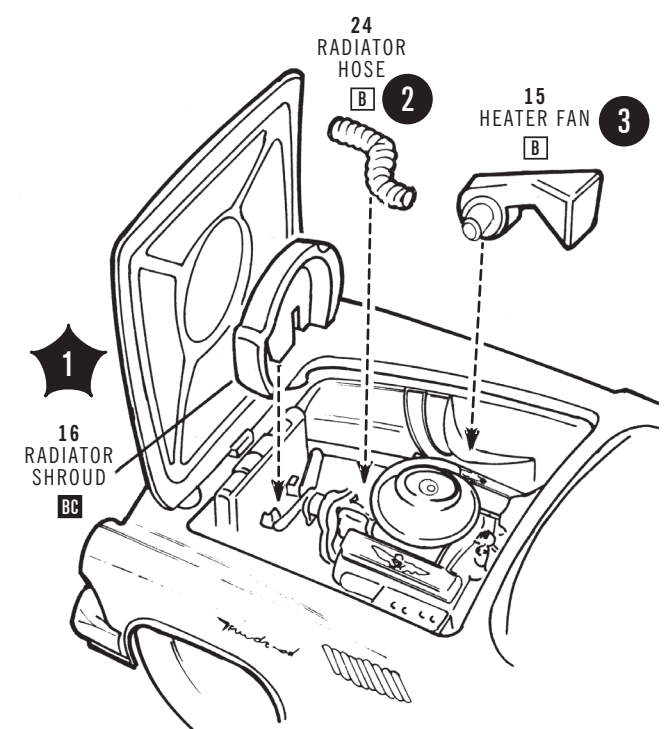


7. REAR



8. FINAL ENGINE



1957 FORD THUNDERBIRD

READ THIS BEFORE YOU BEGIN

This kit may be built more than one way. Look over this instruction sheet carefully before you begin building. You may decide to combine parts from the different versions shown, or use parts from other AMT® kits. After you've planned your car, follow the assembly instructions and "test-fit" the parts without cementing. This will familiarize you with the locations of parts.

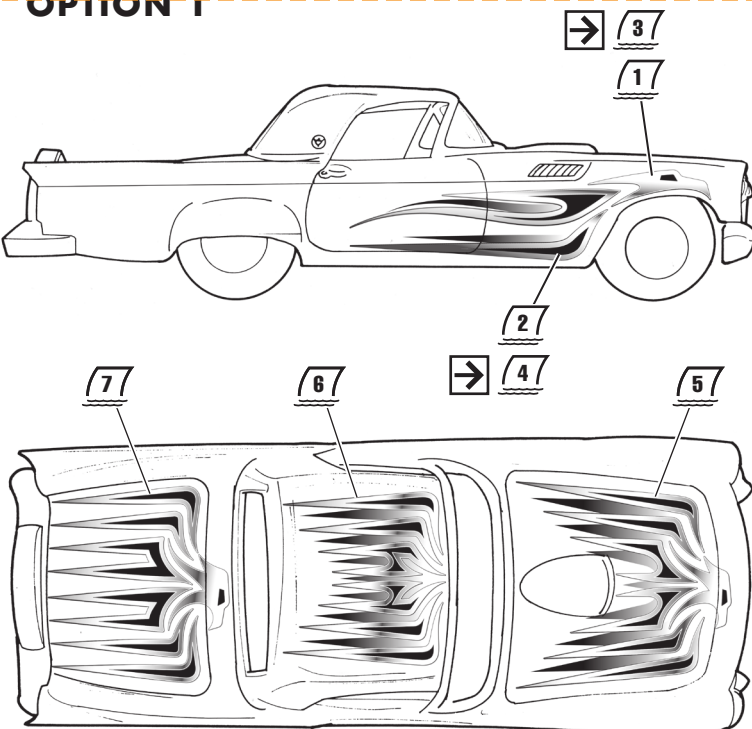
For the best results, the various sub-assemblies and components should be painted before any "chrome" parts are attached. For example: when attaching "non-chrome" body accessories, it is best to cement them in place and paint the body as a unit.

AMT® kits are molded from the finest high-impact styrene plastic. Use only paint and cement made for styrene. Trim excess plastic from parts before joining. When attaching "chrome" parts, scrape plating away where parts are to be joined. Use just enough cement to join parts, and be careful not to smear cement on exposed surfaces.

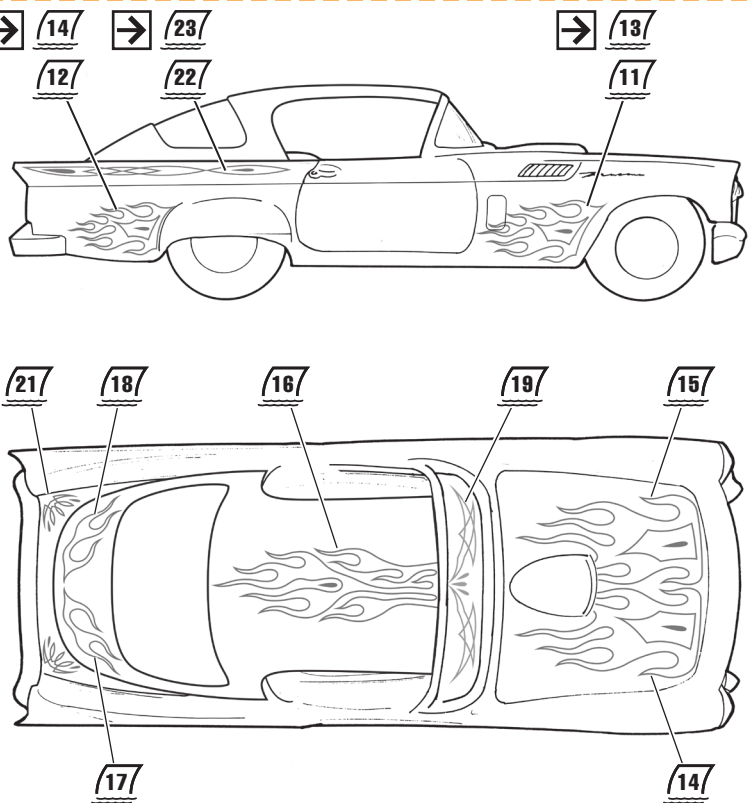
Built according to the instructions on this sheet, you should have no trouble assembling your kit. Just FOLLOW THE NUMBERS, as parts are numbered in order of assembly. NOTE: (C) indicates "chrome" parts.

DECAL PLACEMENT

OPTION 1



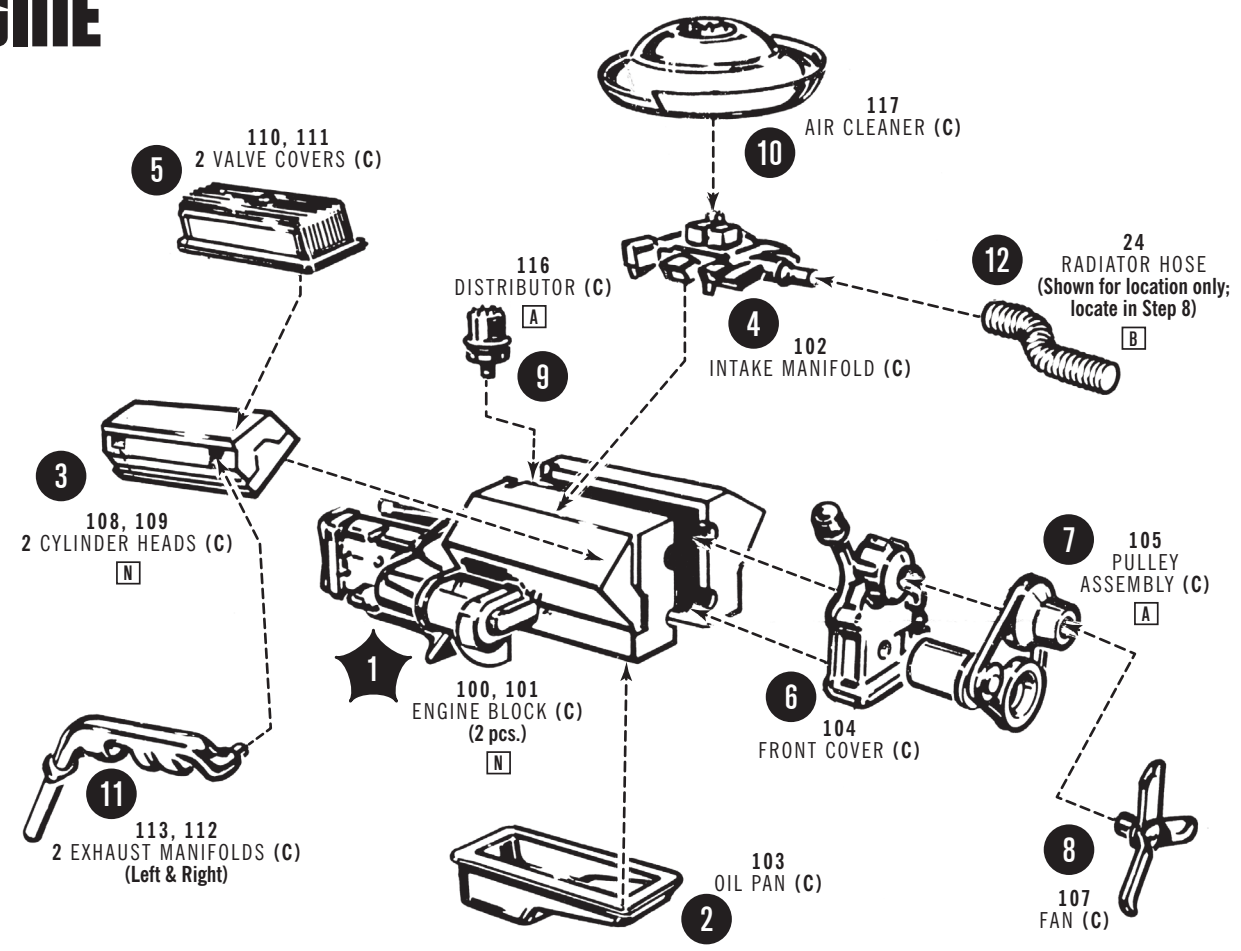
OPTION 2



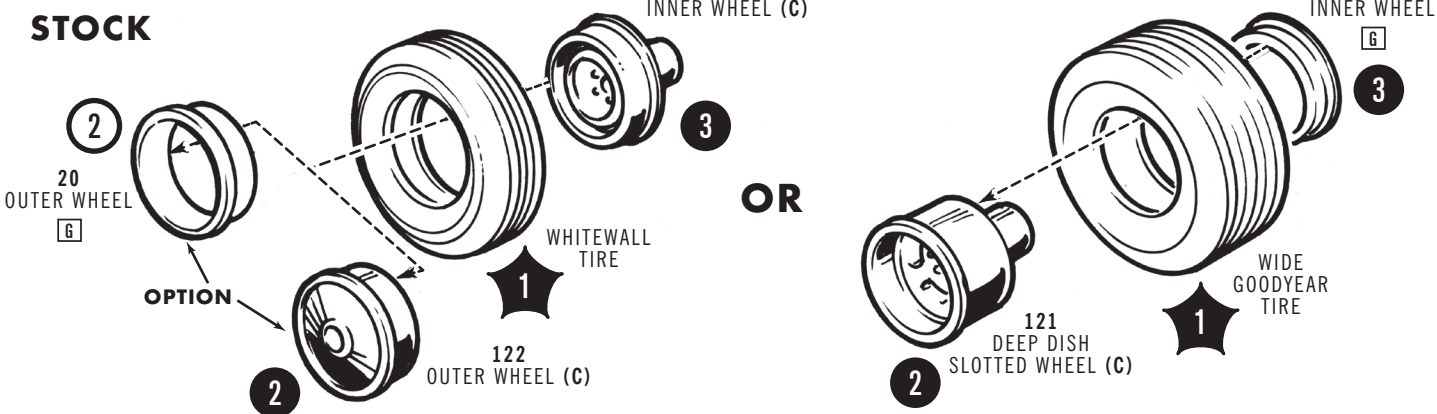
| PAINT COLORS |                  |   |            |   |                        |    |                   |
|--------------|------------------|---|------------|---|------------------------|----|-------------------|
| A            | Black            | D | White      | G | Chrome (Bright Silver) | J  | Brass             |
| B            | Flat Black       | E | Flat White | H | Aluminum               | K  | Gold              |
| C            | Semi-Gloss Black | F | Silver     | I | Steel                  | L  | Amber             |
|              |                  |   |            |   |                        | M  | Transparent Amber |
|              |                  |   |            |   |                        | N  | Red               |
|              |                  |   |            |   |                        | O  | Transparent Red   |
|              |                  |   |            |   |                        | IC | Interior Color    |
|              |                  |   |            |   |                        | BC | Body Color        |

Official Licensed Product  
GOODYEAR  
Ford Motor Company Trademarks and Trade Dress used under license to Round 2, LLC. Goodyear (and Winged Foot Design) and Blimp Design are trademarks of The Goodyear Tire & Rubber Company used under license by Round 2, LLC, South Bend, IN 46628. Copyright 2023 The Goodyear Tire & Rubber Company. AMT and design is a registered trademark of Round 2, LLC. ©2023 Round 2, LLC, South Bend, IN 46628 USA. Product and packaging designed in the USA. Made in China. All rights reserved.

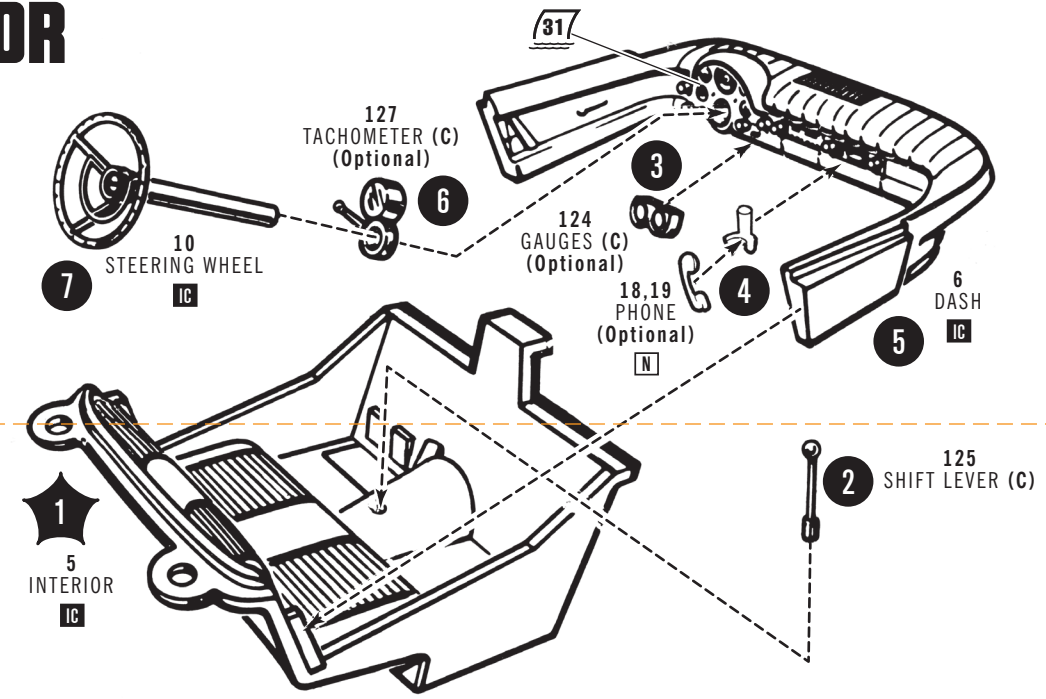
1. ENGINE



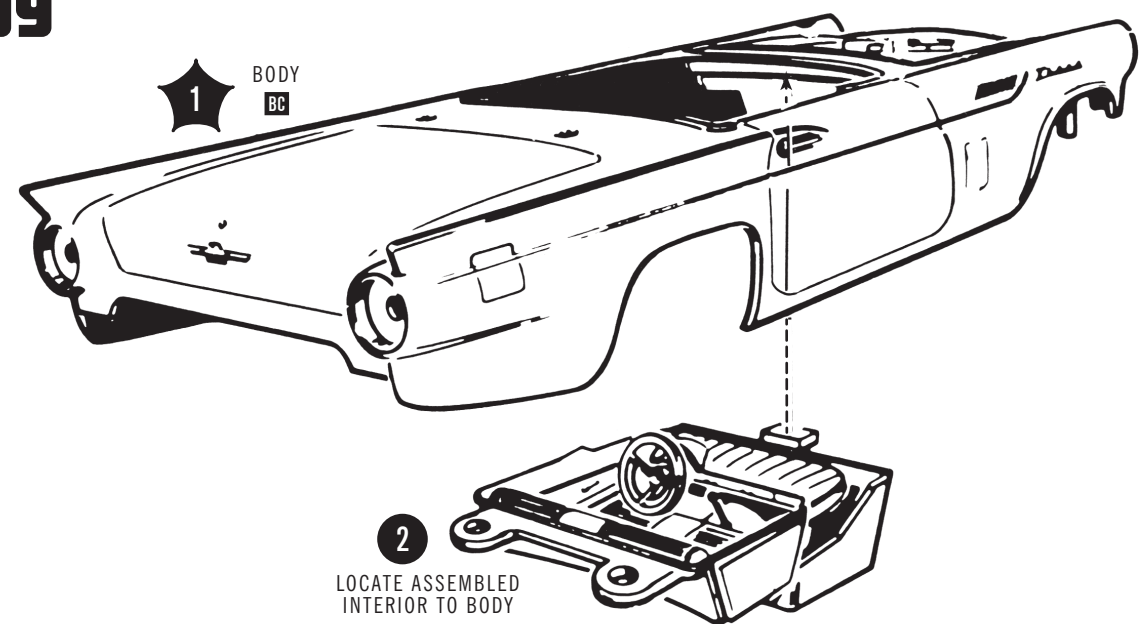
2. WHEELS (X4)



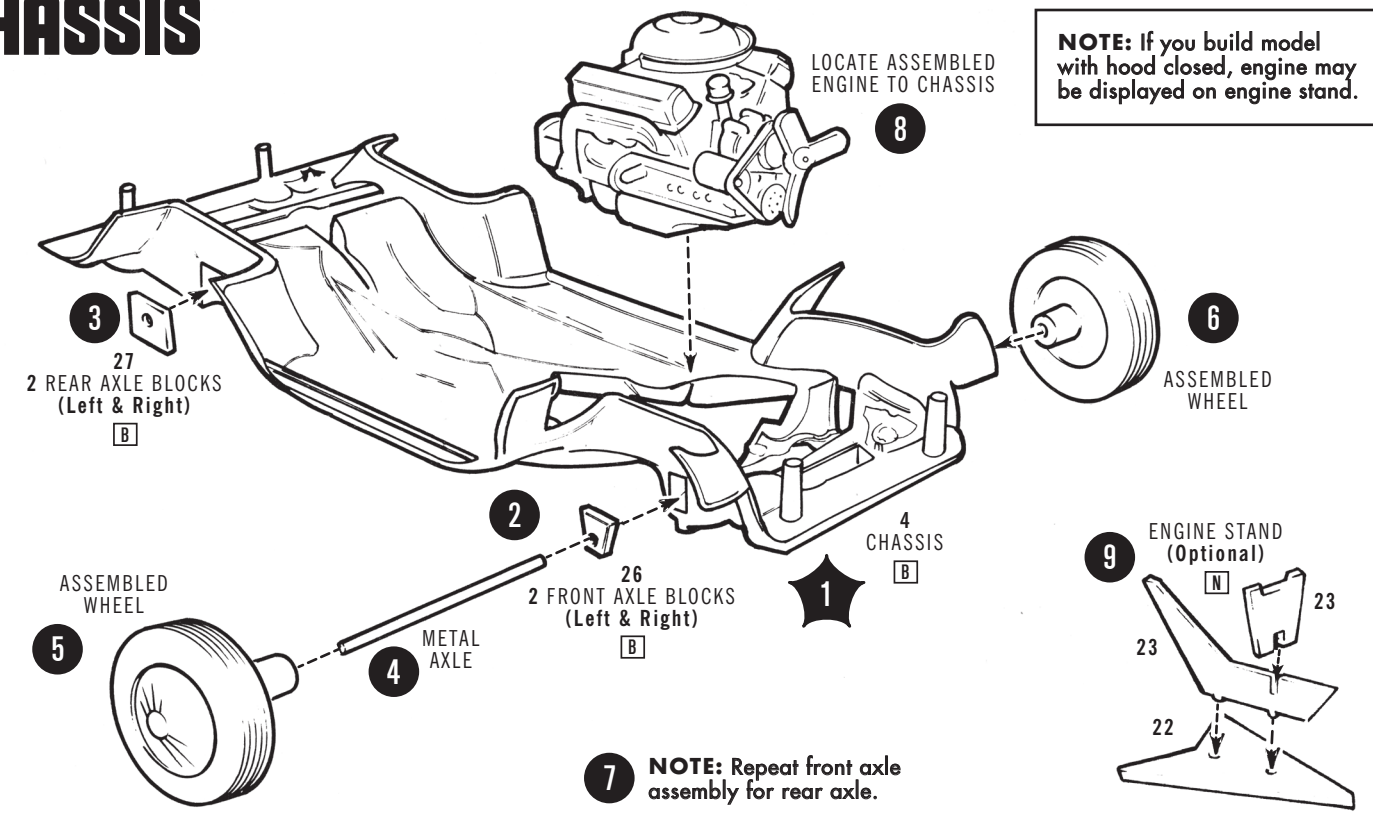
3. INTERIOR



4. BODY



5. CHASSIS



6. EXTERIOR

