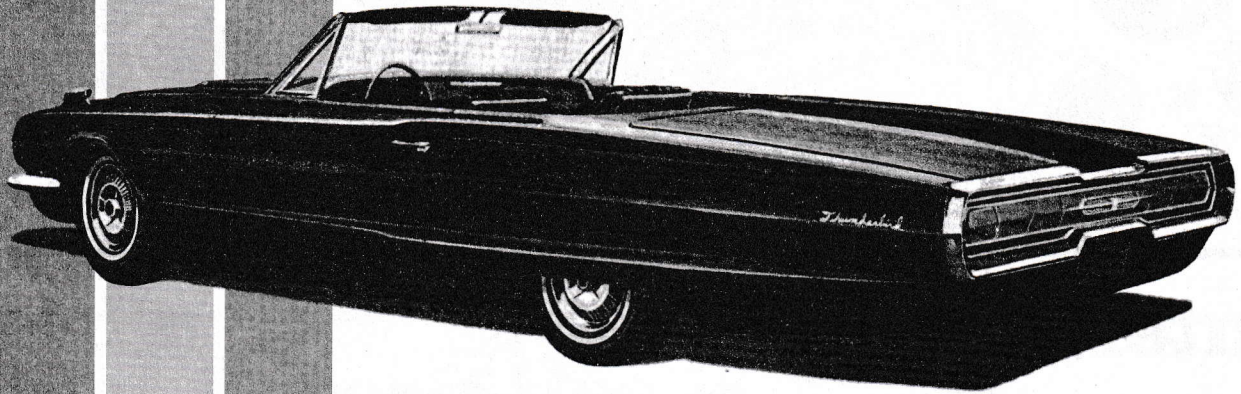


1966

FORD HARDTOP • CONVERTIBLE THUNDERBIRD

1/25 SCALE



A1328-200

READ THIS BEFORE YOU BEGIN

This kit may be built more than one way. Look over this instruction sheet carefully before you begin building. You may decide to combine parts from the different versions shown, or use parts from other AMT® kits. After you've planned your car, follow the assembly instructions and "TEST FIT" the parts without cementing. This will familiarize you with the location of parts.

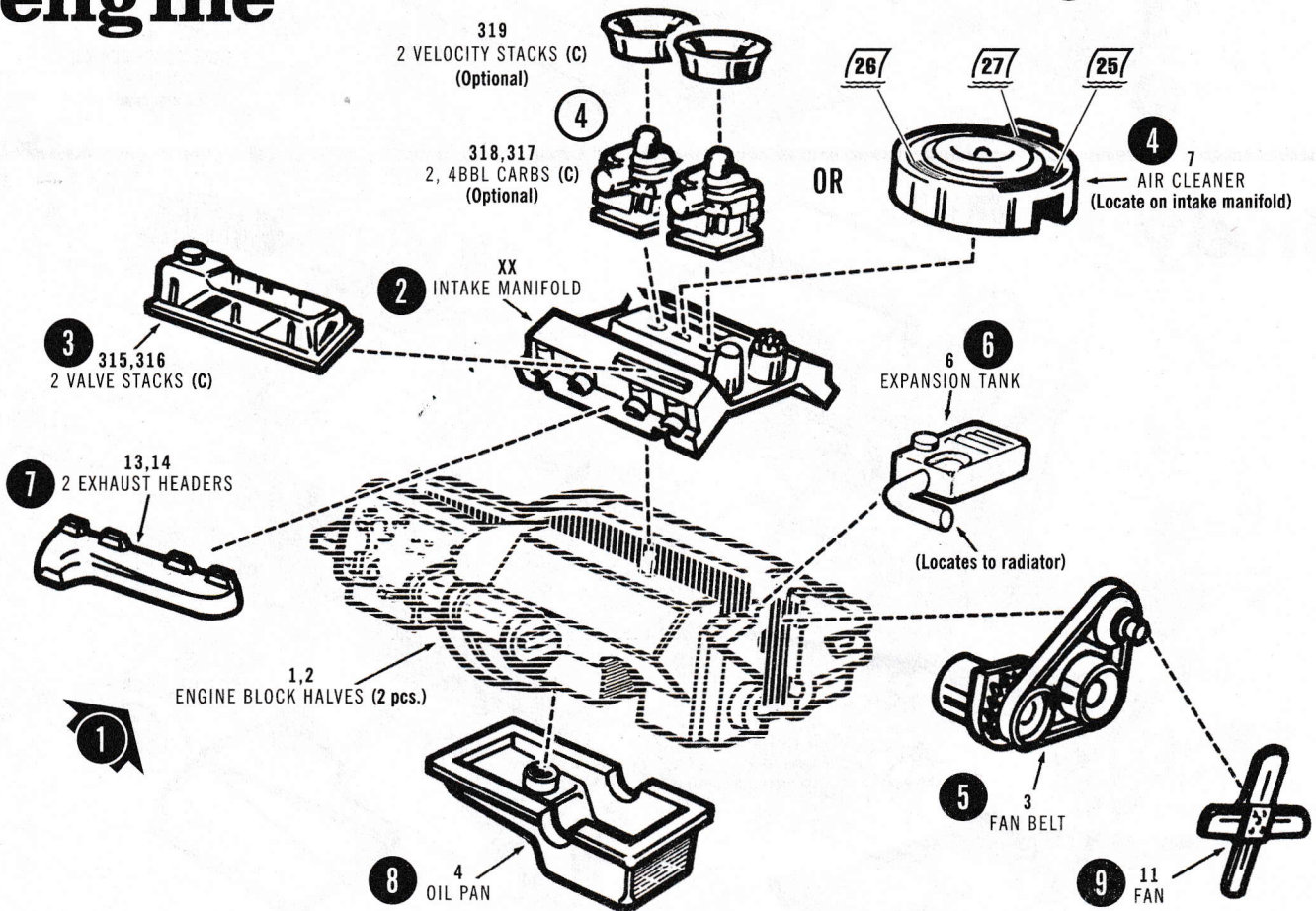
For best results, the various sub-assemblies and components should be painted before any "CHROME" parts are attached. For example: When attaching "NON CHROME" engine parts, it is best to cement them in place and paint as a unit. **"CHROME" PARTS ARE INDICATED BY (C).**

AMT® kits are molded from the finest high-impact styrene plastic. Use only paint and cement made for styrene. Trim excess plastic from parts before joining. When attaching "CHROME" or painted parts, scrape plating or paint away where parts are to be joined. Cement all parts unless otherwise indicated by the instructions. Use just enough cement to join parts and be careful not to smear cement on exposed surfaces.

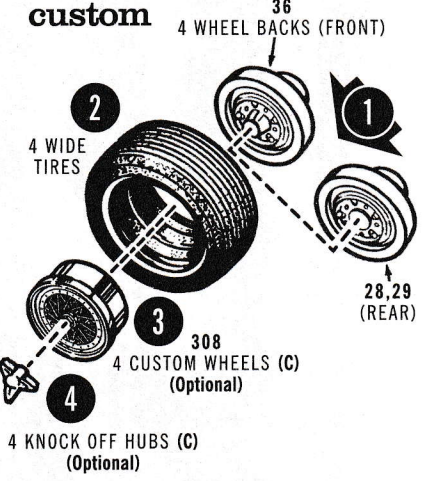
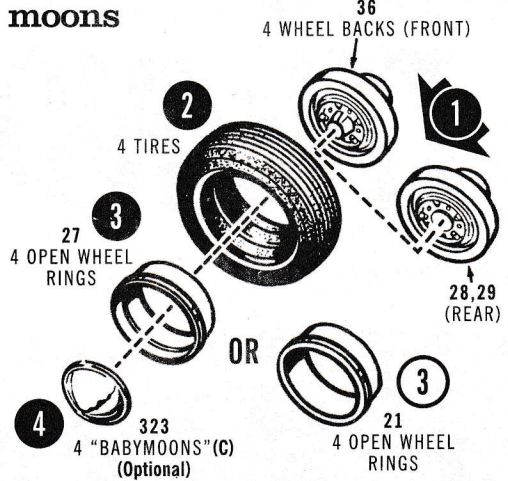
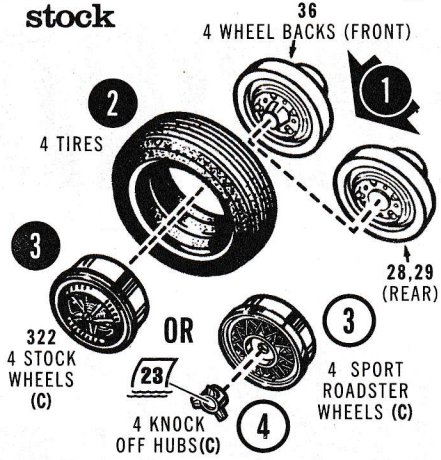
Built according to the instructions on this sheet, you should have no trouble assembling your kit. Just **FOLLOW THE BUILD ORDER SHOWN** as the steps are numbered in order of assembly.

1. engine

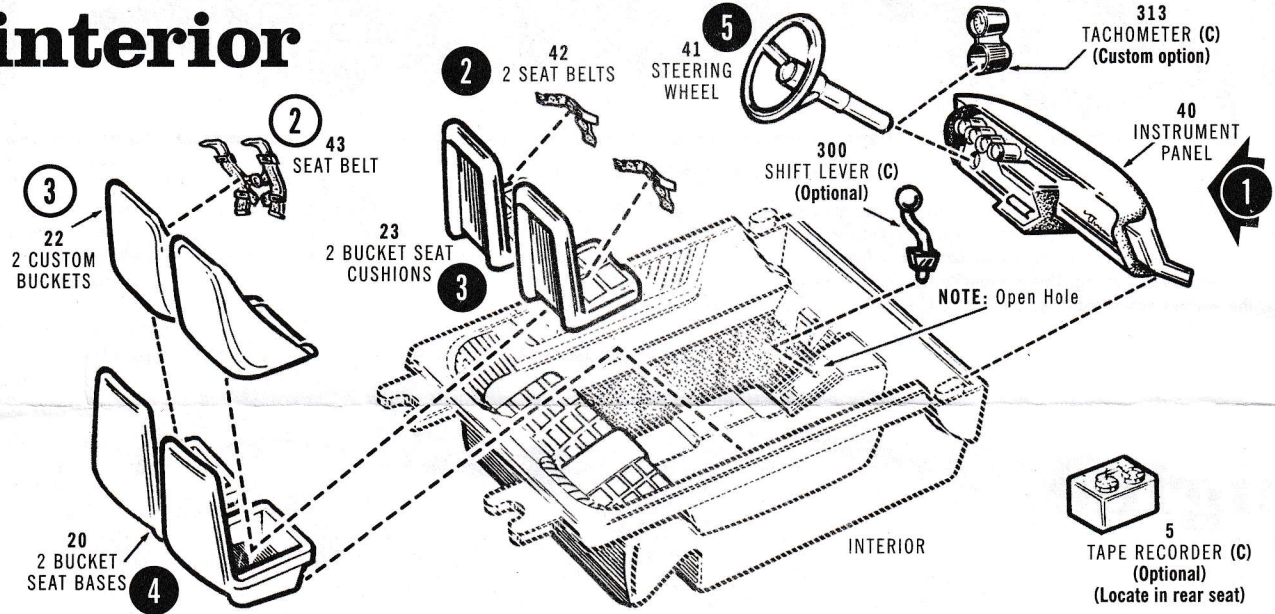
① Assembly Sequence ① Alternate  Apply Decal



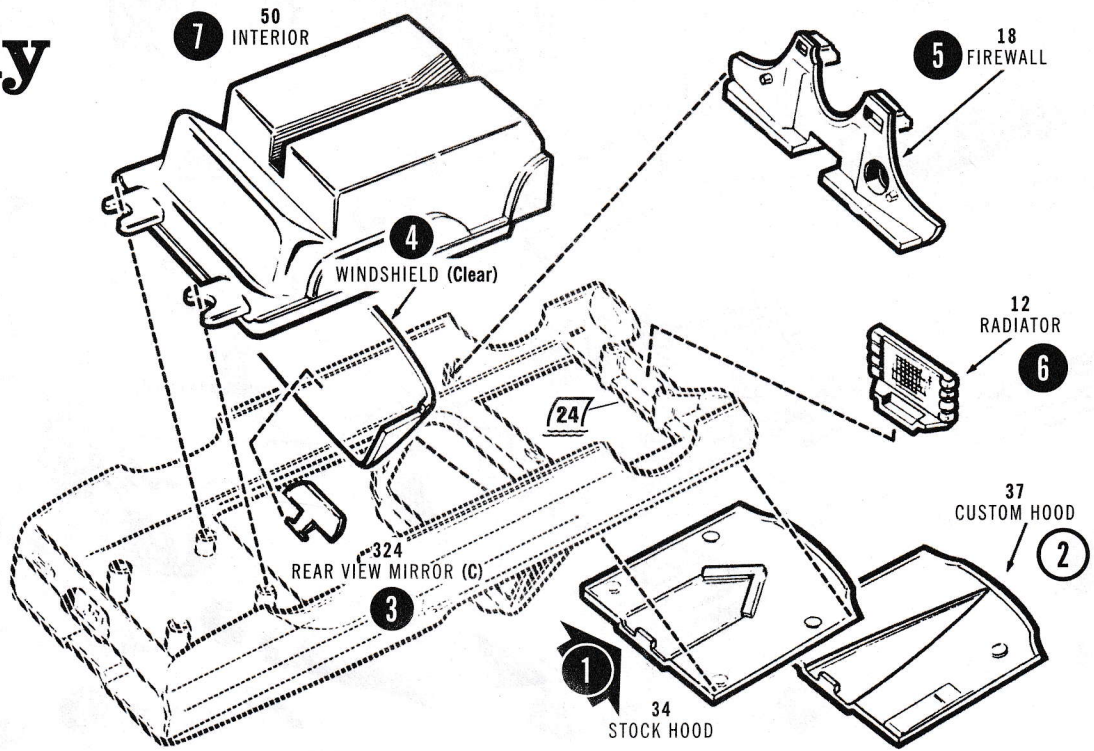
2. wheels (4X)



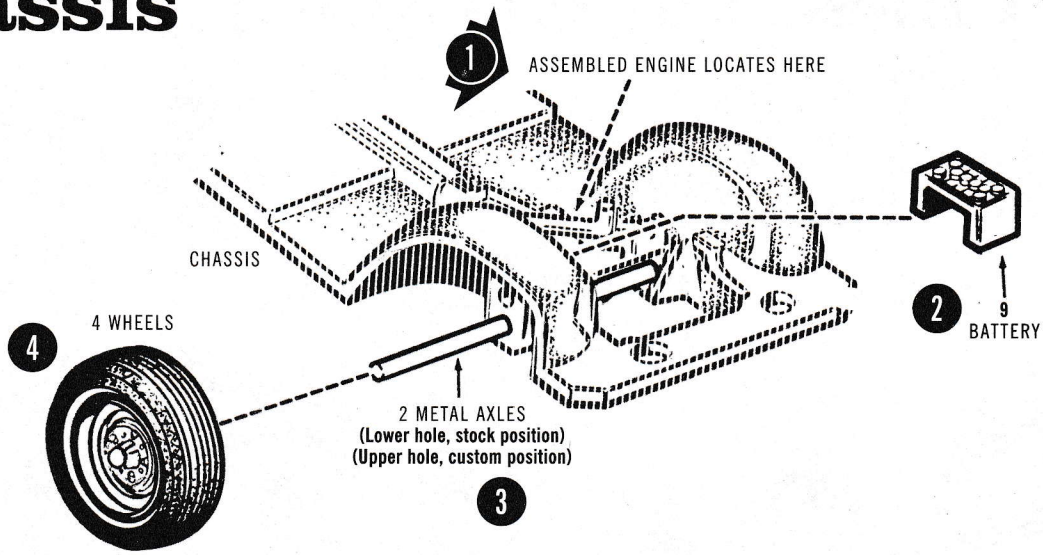
3. interior



4. body

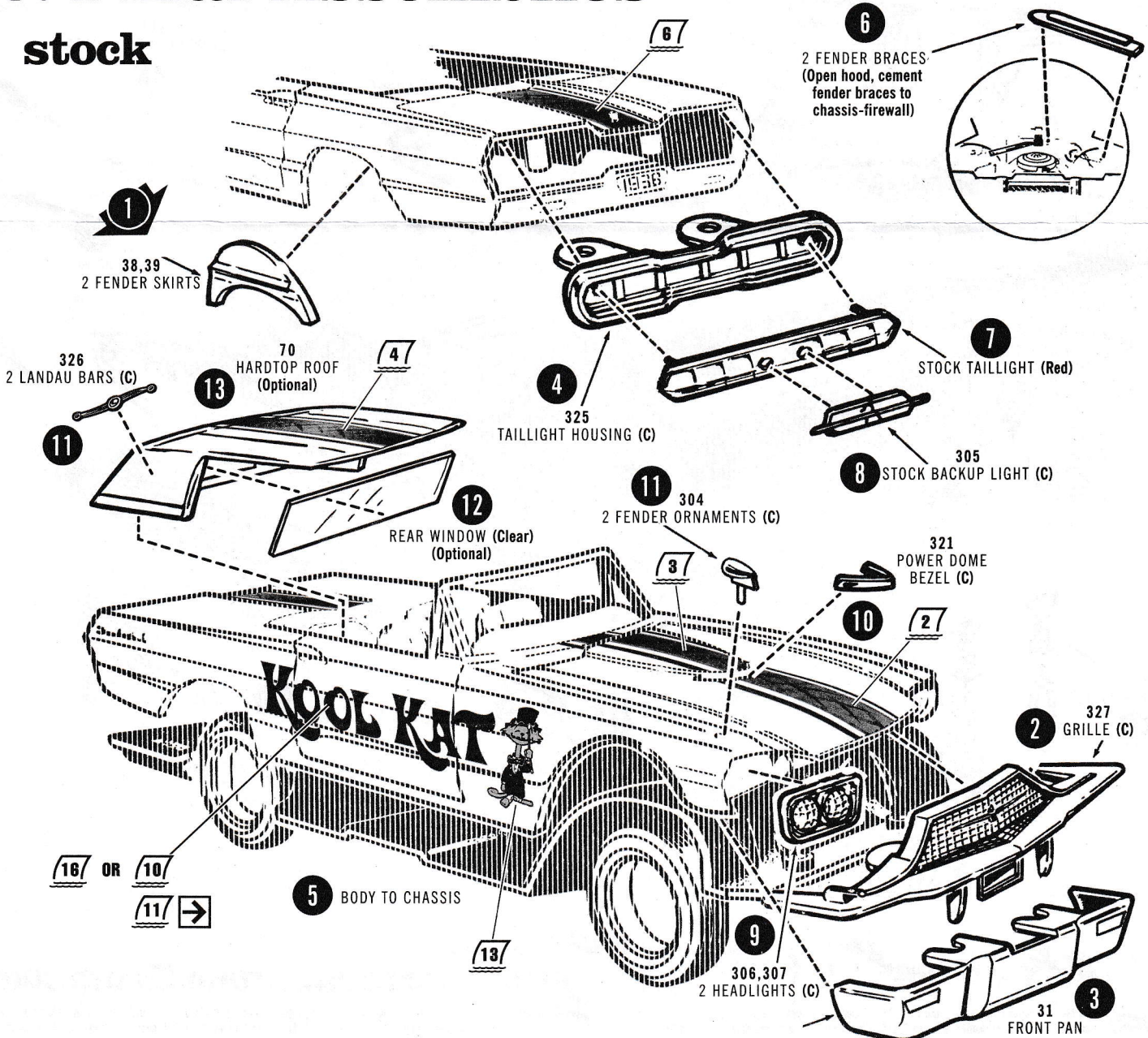


5. chassis



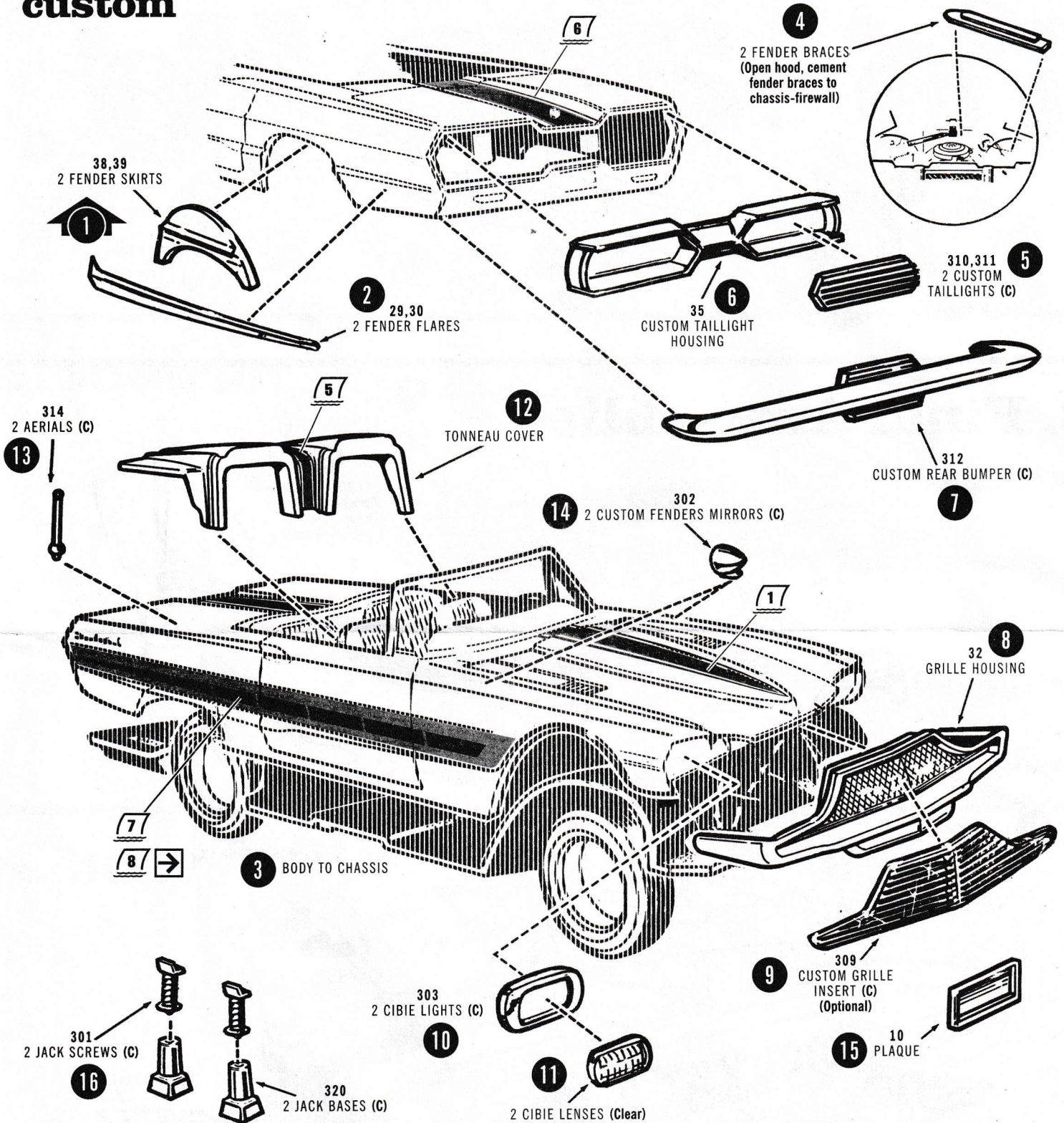
6. Final Assemblies

stock



6. Final Assemblies (cont.)

custom



ROUND 2, LLC
4073 MEGHAN BEELER COURT
SOUTH BEND, IN 46628



INTERNATIONAL HOBBYCRAFT CO.
272 AVENUE HENRI-BARBUSSE
MARLY-LEZ-VALENCIENNES 59770, FRANCE
WWW.HOBBY-EXPORTER.COM

For a complete list of our newest model kits and more, visit:
Pour une liste complète de nos kits de modèles les plus récents et plus encore, visitez:

round2corp.com



Firestone
OFFICIALLY LICENSED PRODUCT

Ford Motor Company Trademarks and Trade Dress used under license to Round 2, LLC. All rights reserved. Firestone and F Shield Logo are registered trademarks of Bridgestone Brands, LLC and are used with permission. Other names and trademarks used under license to Round 2, LLC or by permission. AMT and design and ROUND 2 and design are registered trademarks of Round 2, LLC. ©2022 Round 2, LLC, South Bend, IN 46628 USA. Product and packaging designed in the USA. Made in China. All rights reserved.