

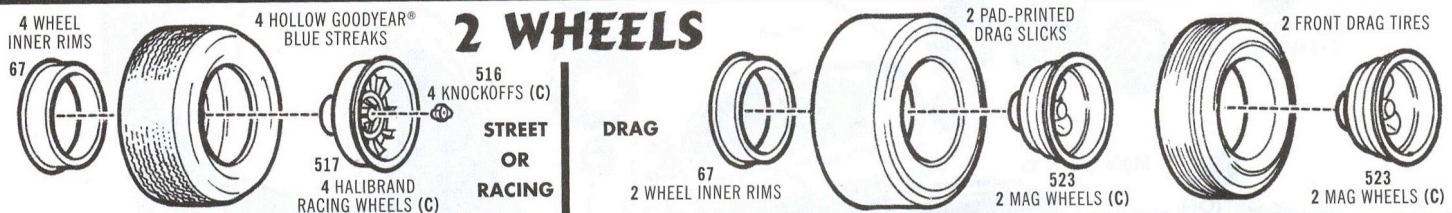
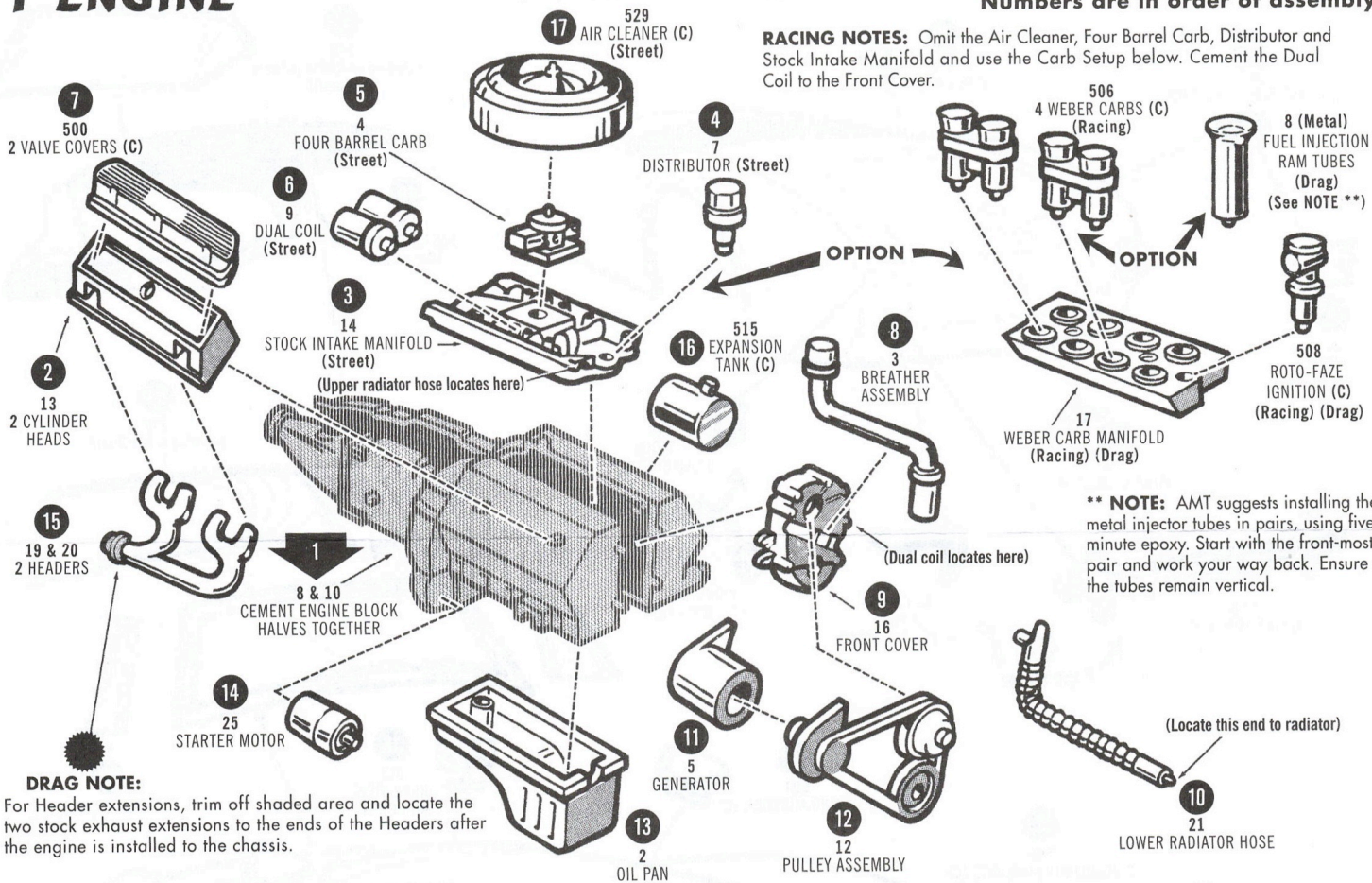
BASIC ASSEMBLIES

I ENGINE

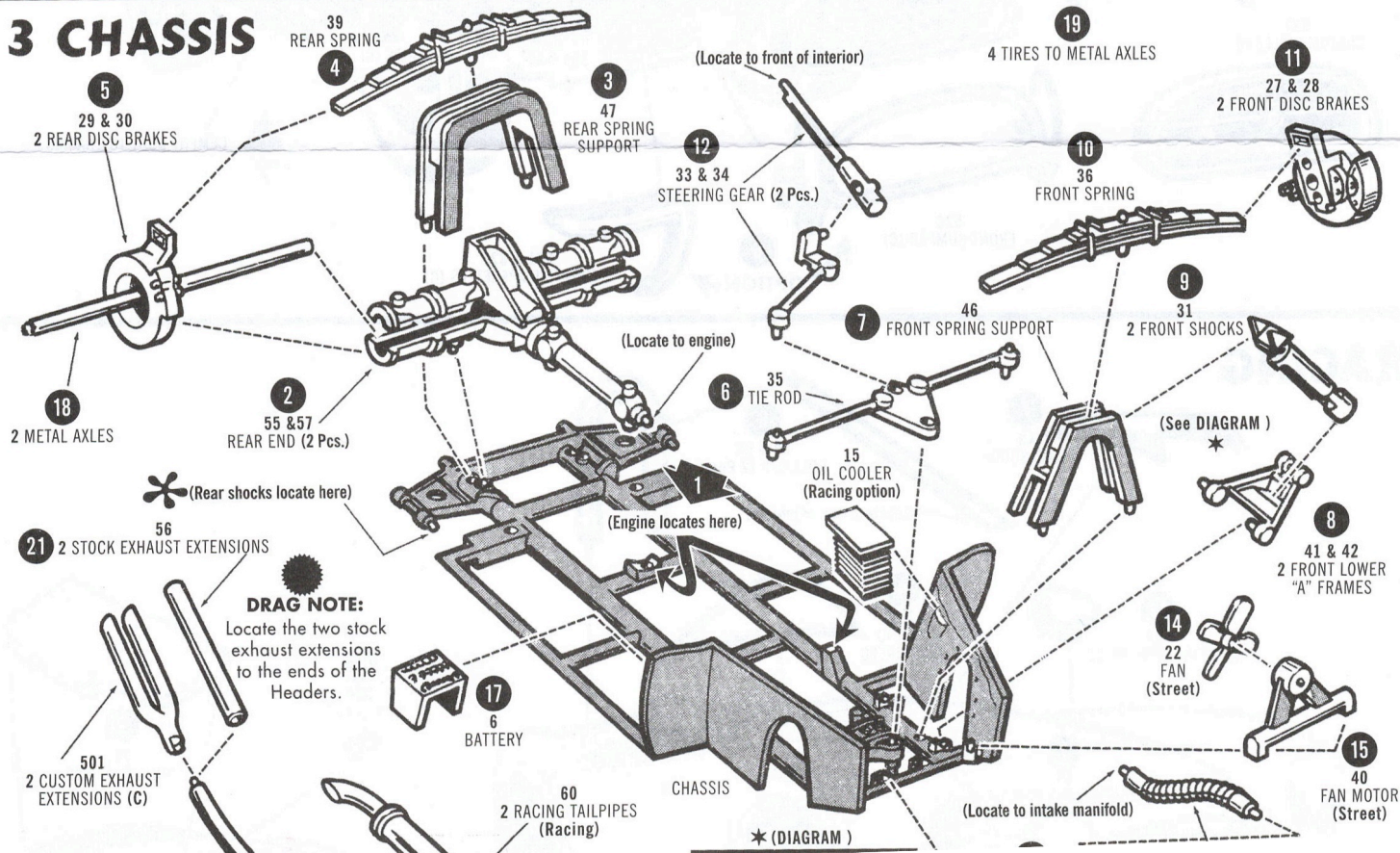
NOTE: (C) INDICATES CHROME PARTS

Numbers are in order of assembly

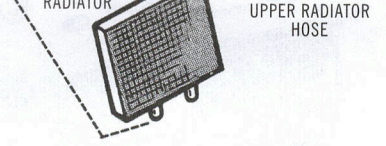
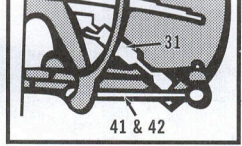
RACING NOTES: Omit the Air Cleaner, Four Barrel Carb, Distributor and Stock Intake Manifold and use the Carb Setup below. Cement the Dual Coil to the Front Cover.



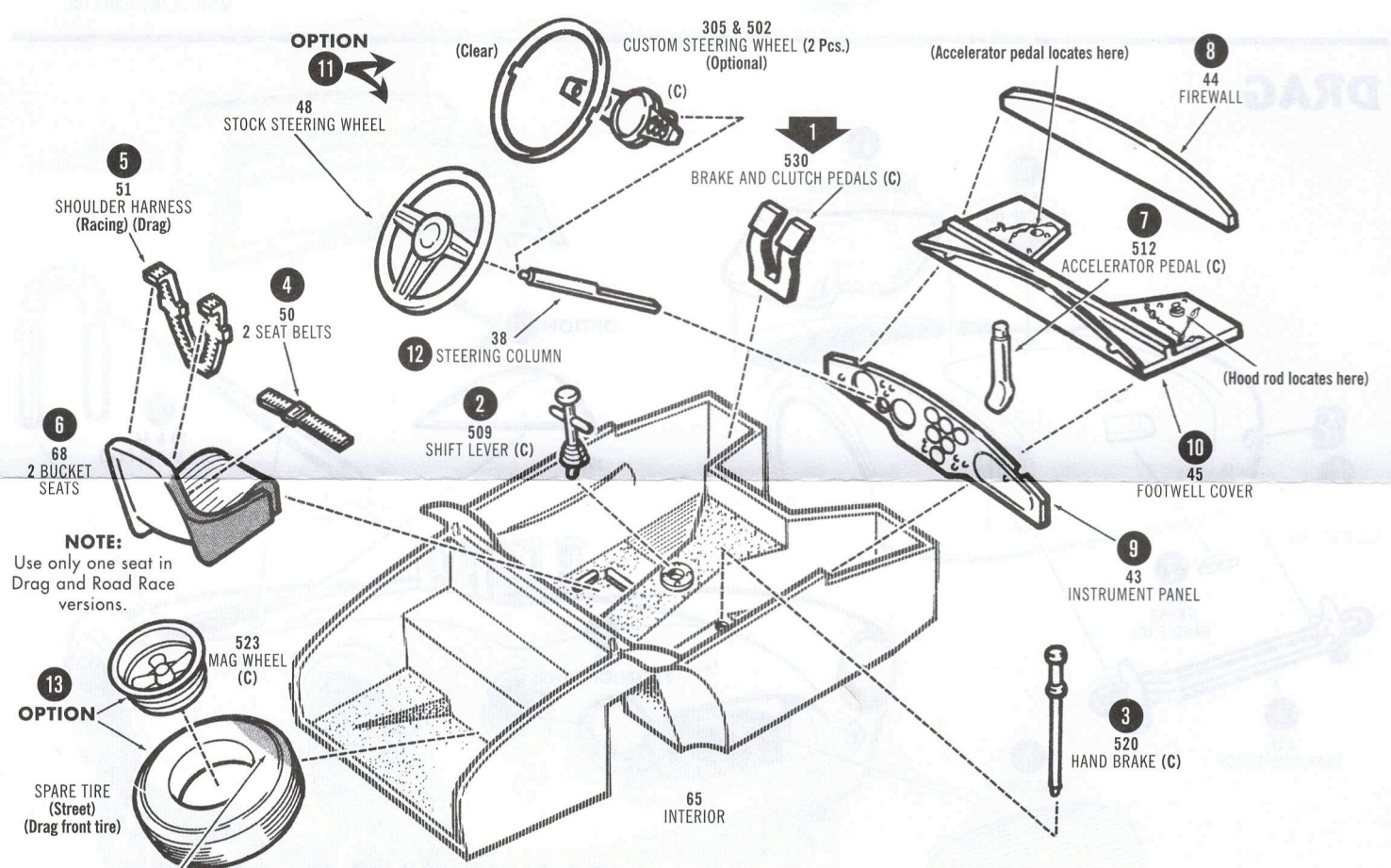
3 CHASSIS



20
24 & 26
2 STOCK TAILPIPES
(Street)



4 INTERIOR

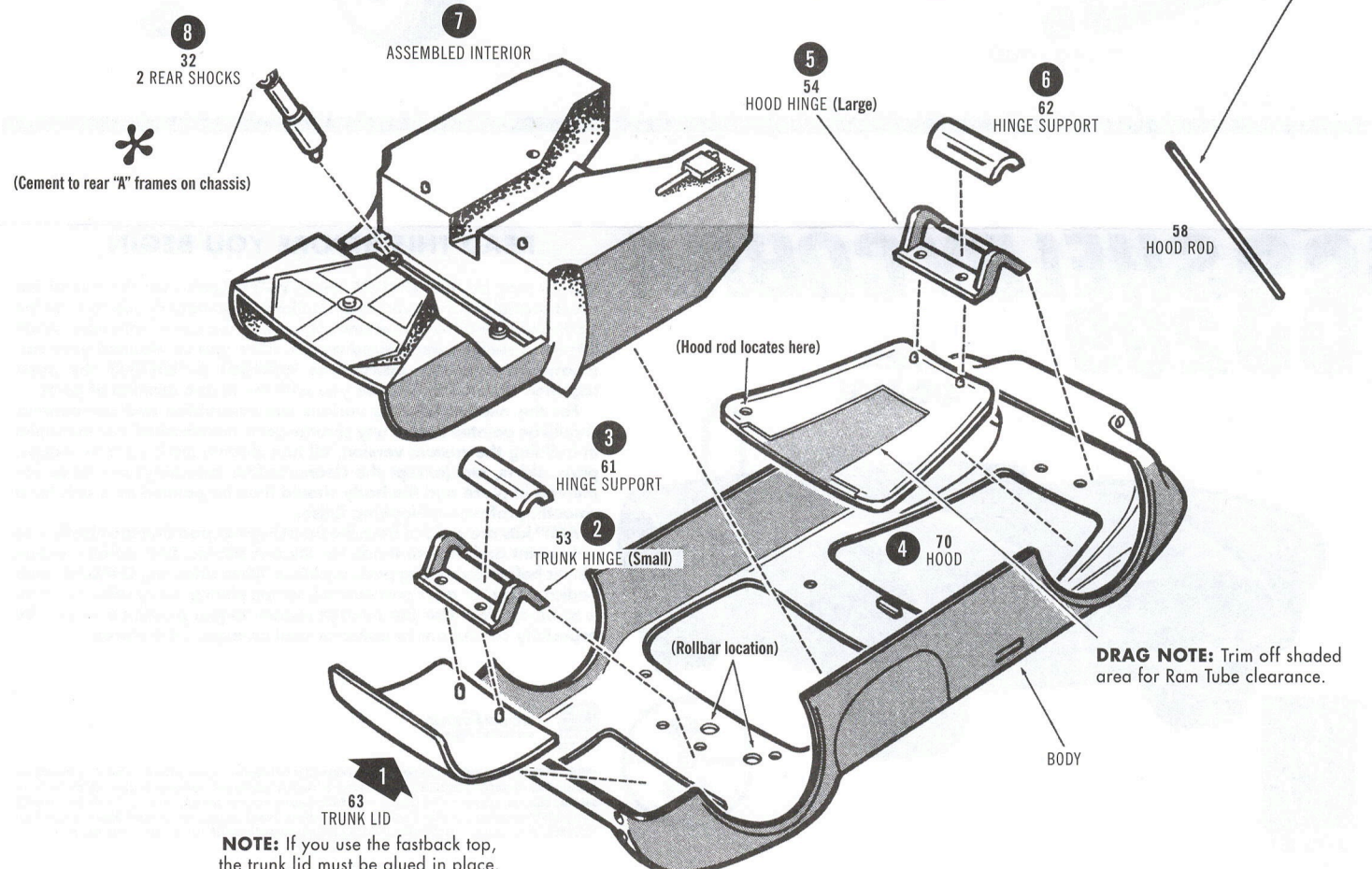


NOTE: Cut off shaded portion of tire and mount to front wall of trunk.

5 BODY

DRAG & RACING NOTE: Open Holes for Roll Bar.

NOTE: To Display your Engine, Locate Hood Rod to Hole Provided in Hood and Footwell Cover.

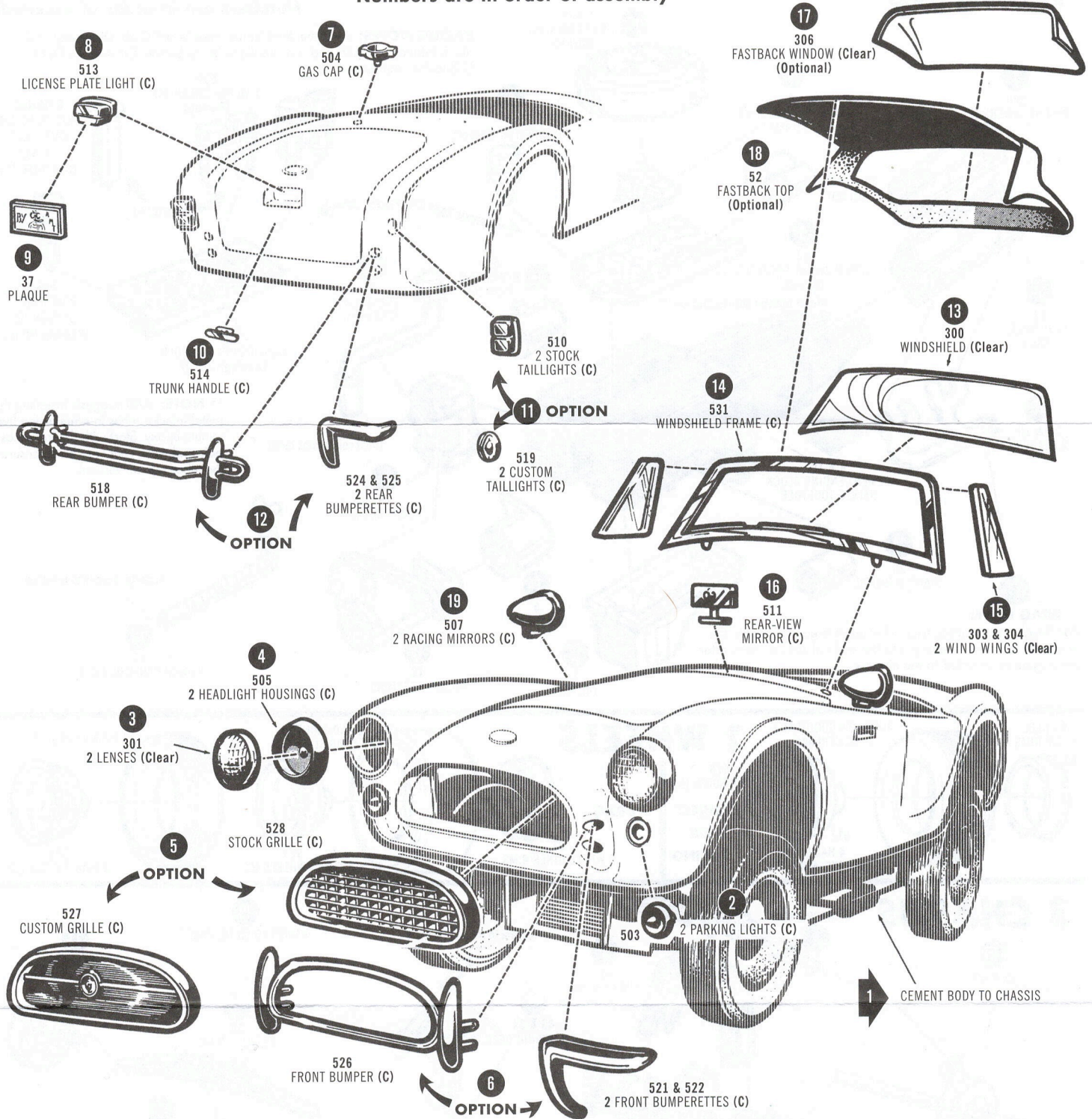


STREET

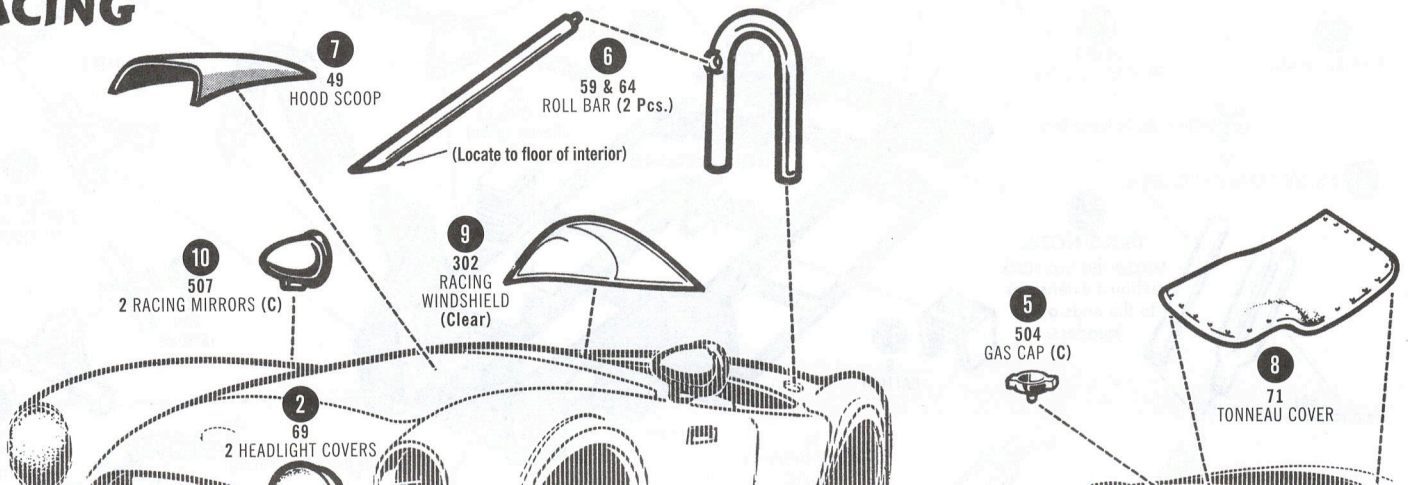
FINAL ASSEMBLIES

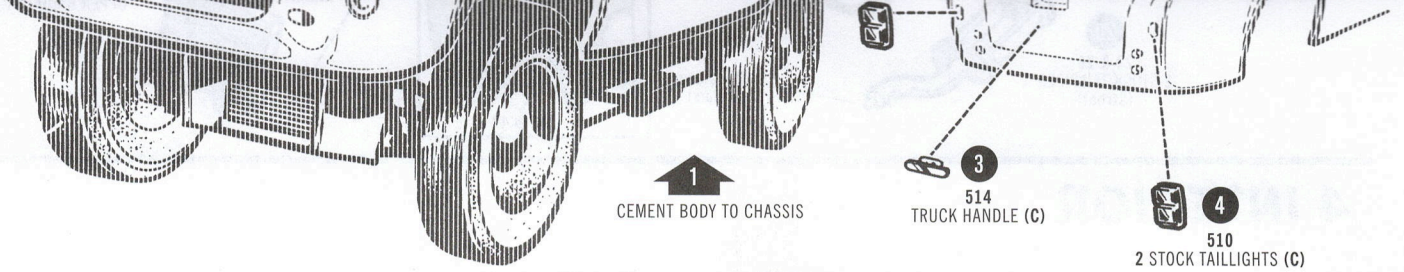
(C) INDICATES CHROME PARTS

Numbers are in order of assembly

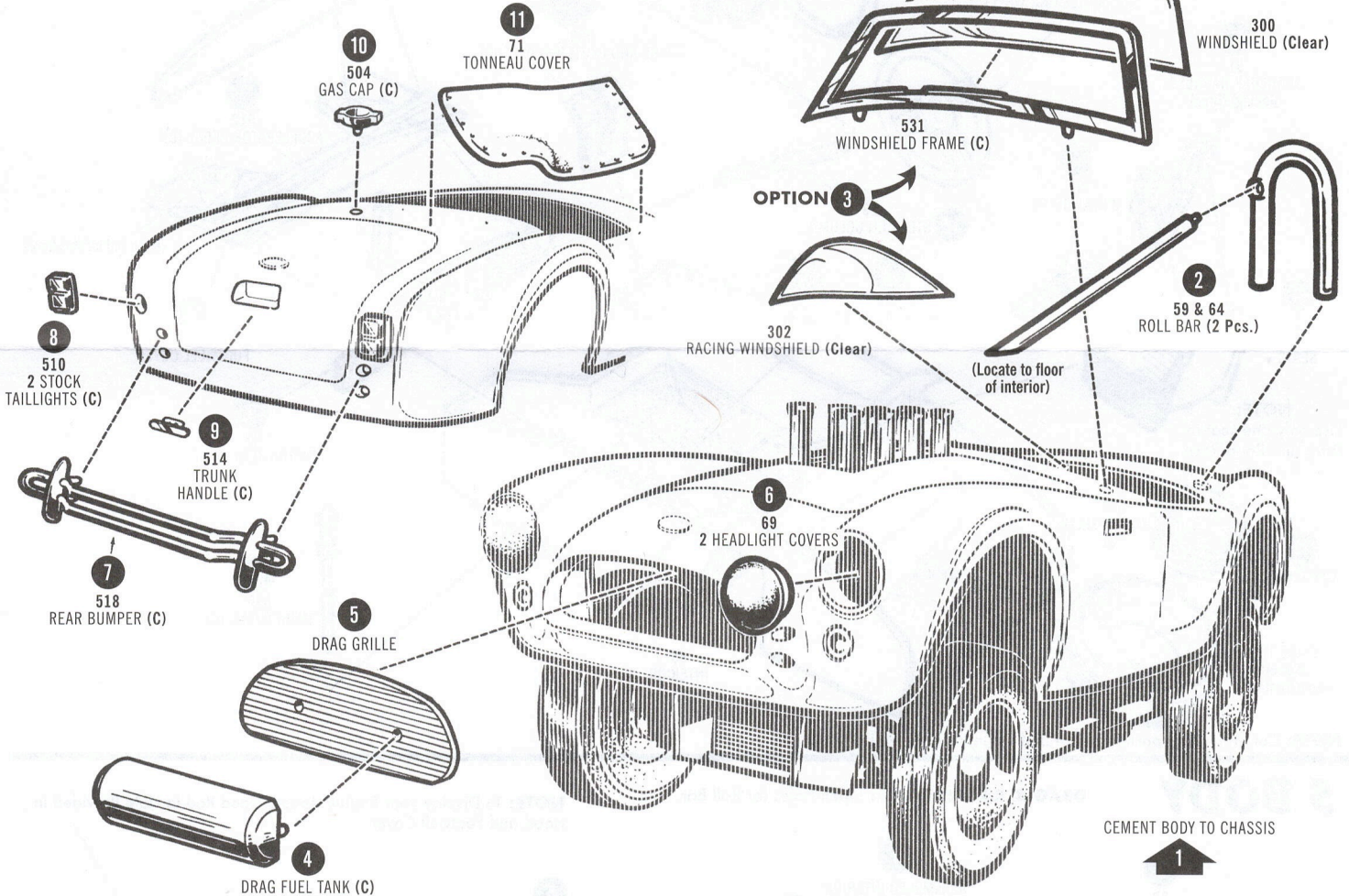


RACING





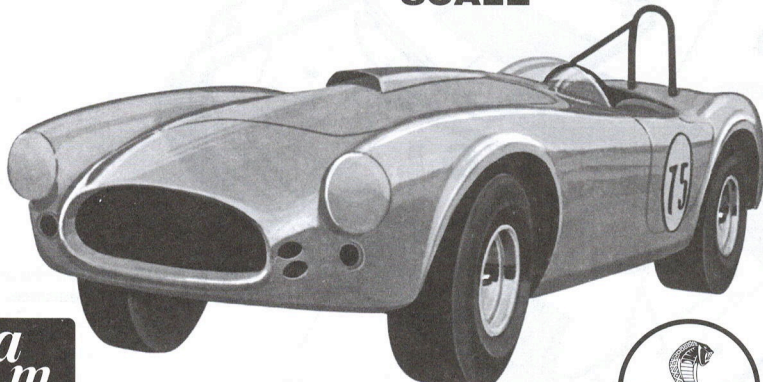
DRAG



'63 SHELBY COBRA

289

1/25
SCALE



READ THIS BEFORE YOU BEGIN

This kit may be built **ONE OF THREE WAYS**. Look over this instruction sheet carefully before you begin building. You may decide to combine parts from the different versions shown, or use parts from other AMT® kits for a really personalized model. After you've planned your car, follow the assembly instructions **WITHOUT CEMENTING** the parts together. This will familiarize you with the fit and location of parts.

For the neatest job, the various sub-assemblies and components should be painted before any chrome parts are attached. For example: in building the *custom* version, all non-chrome parts such as scoops, pans, skirts, etc. (except the clear window assembly) should be cemented in place and the body should then be painted as a unit for a smooth, professional-looking finish.

AMT® kits are molded from the finest High-Impact Styrene plastic. Use only paint and cement made for Styrene plastic. Trim off any excess plastic before cementing parts together. When attaching **CHROME** parts (indicated by "C" after part names), scrape plating away where cement is to be applied. Use *just enough* cement to join plastic parts, and be especially careful not to smear cement on exposed surfaces.



A1319-200



SHELBY and Shelby Cobras tradenames are registered trademarks and/or the tradename of Carroll Shelby and Carroll Shelby Licensing, Inc. (Shelby). COBRA and the COBRA SNAKE Designs are trademarks of Ford Motor Company used under license. Goodyear (and Wing Foot Design) and Blimp Design are trademarks of The Goodyear Tire & Rubber Company used under license by Round 2, LLC, South Bend, IN 46628. Copyright 2022 The Goodyear Tire & Rubber Company. AMT and design and Round 2 and design are registered trademarks of Round 2, LLC. ©2022 Round 2, LLC, South Bend, IN 46628 USA. Product and packaging designed in the USA. Made in China. All rights reserved.