

CONSTRUCTION BULLDOZER

READ THIS BEFORE YOU BEGIN

Cement all parts unless otherwise indicated.

Look over this instruction sheet carefully before you begin building. Follow the assembly instructions and "test-fit" the parts without cementing. This will familiarize you with the location of the parts.

For the best results, the various sub-assemblies and components should be painted before any CHROME parts are attached. For example: When attaching non-chrome body accessories, it is best to cement them in place and paint the body as a unit.

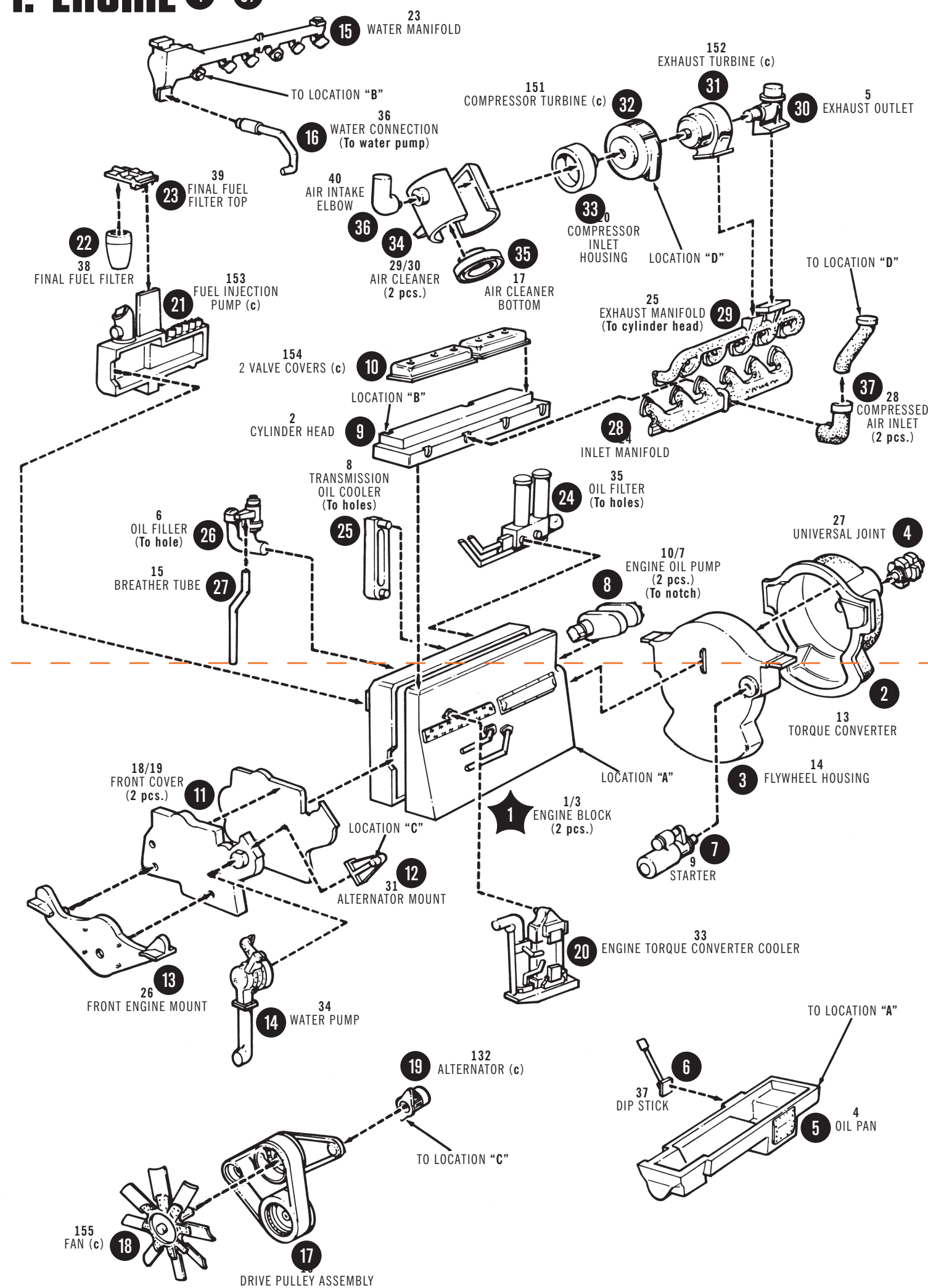
AMT kits are molded from the finest high-impact styrene plastic. Use

only paint and cement made for styrene. Trim excess plastic from parts before joining. When attaching CHROME parts, scrape plating away where parts are to be joined. Use just enough cement to join parts, and be careful not to smear cement on exposed surfaces.

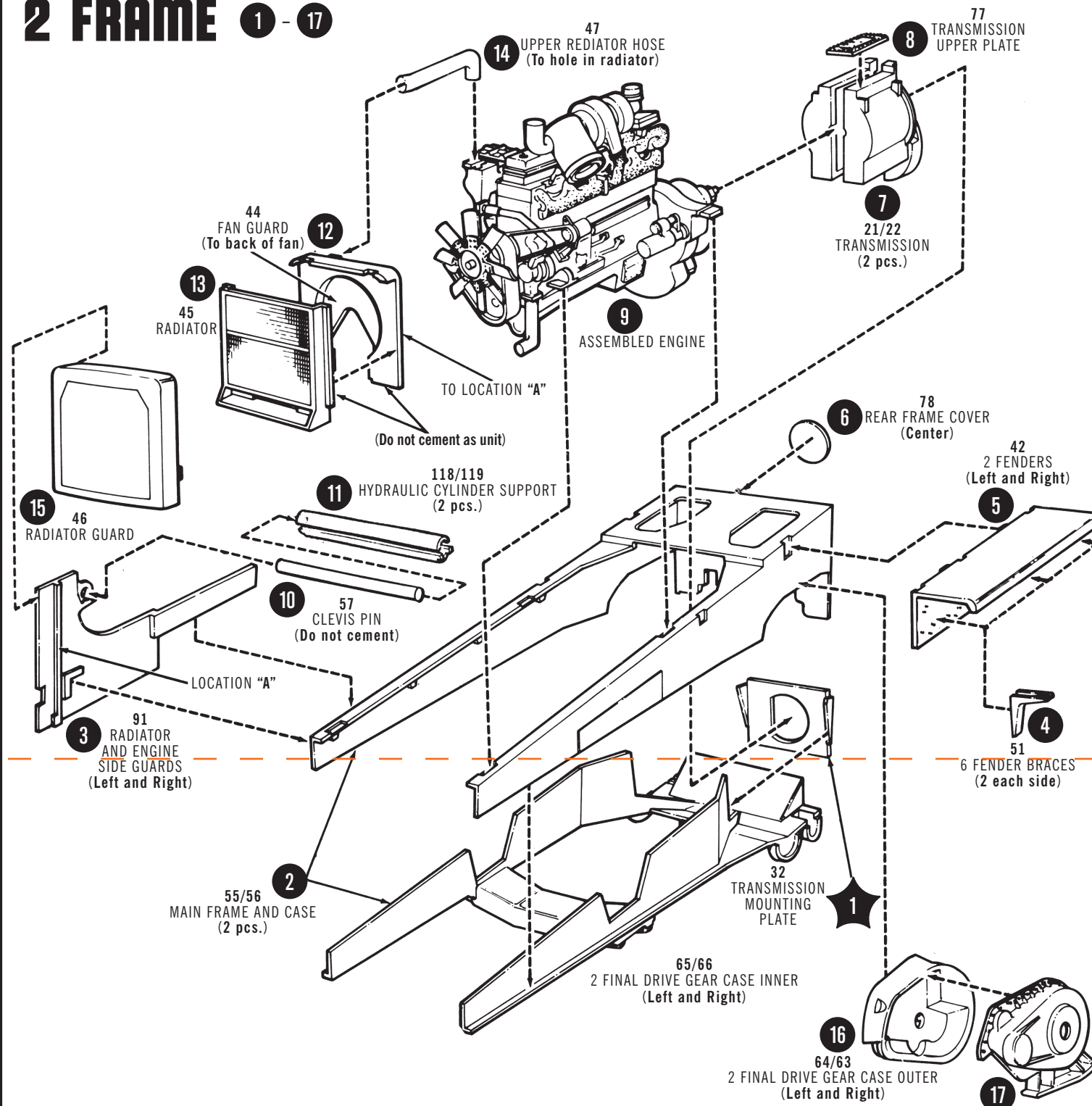
Built according to the instructions on this sheet, you should have no trouble assembling your kit. Just FOLLOW THE NUMBERS, as parts are numbered in order of assembly. NOTE: (c) indicates CHROME parts.

1. ENGINE 1 - 37

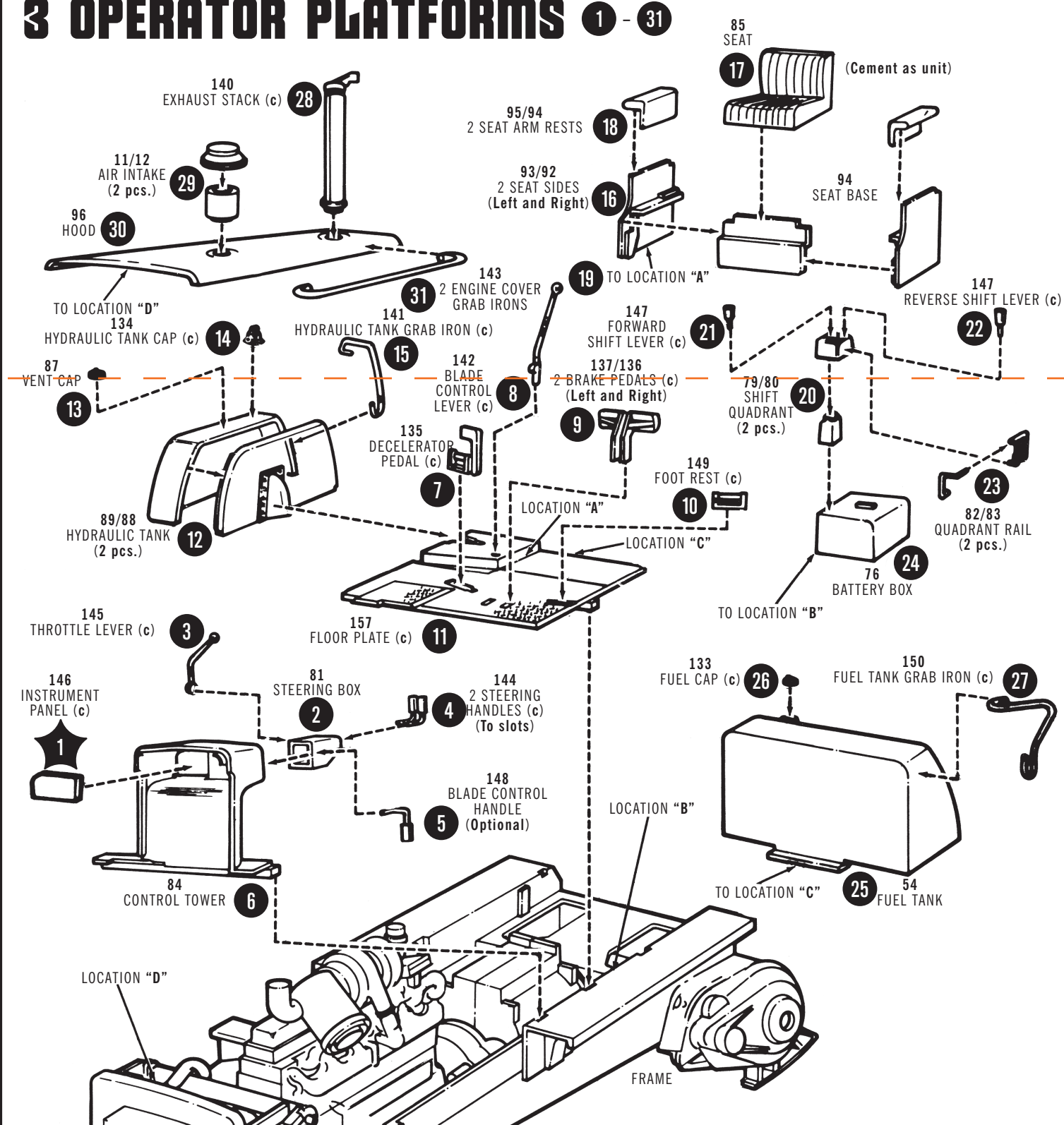
NOTE: See box tray for part numbers.



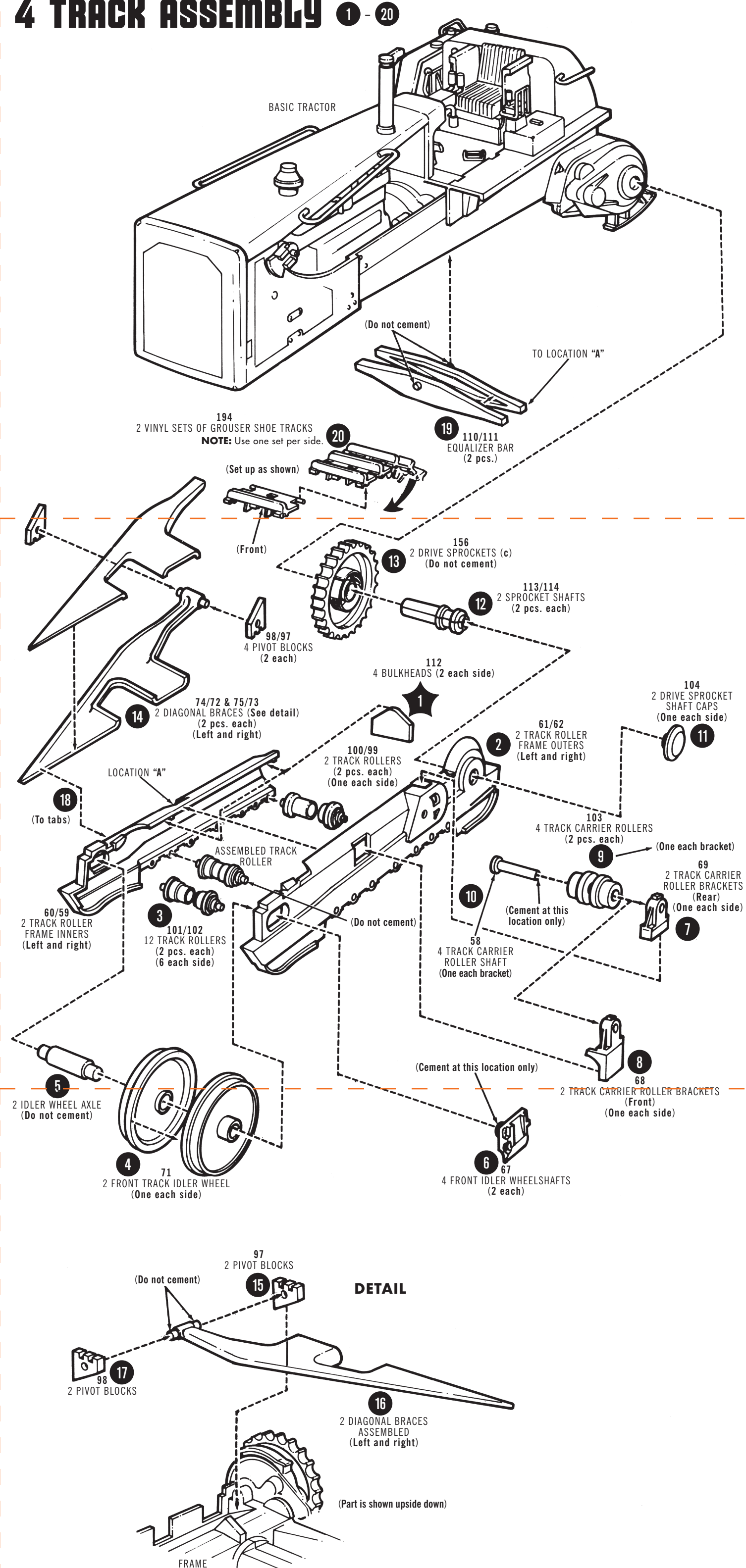
2 FRAME 1 - 17



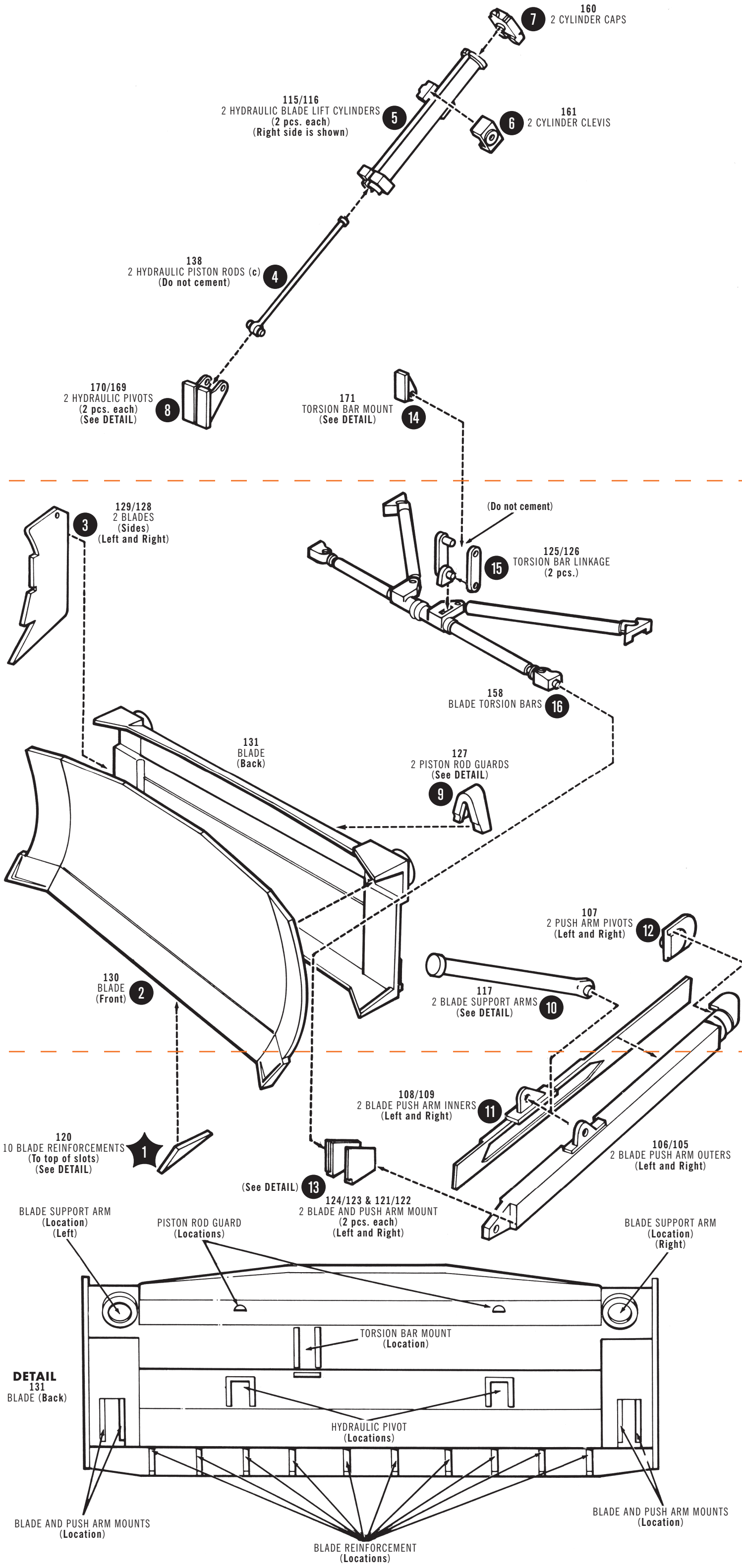
3 OPERATOR PLATFORMS 1 - 31



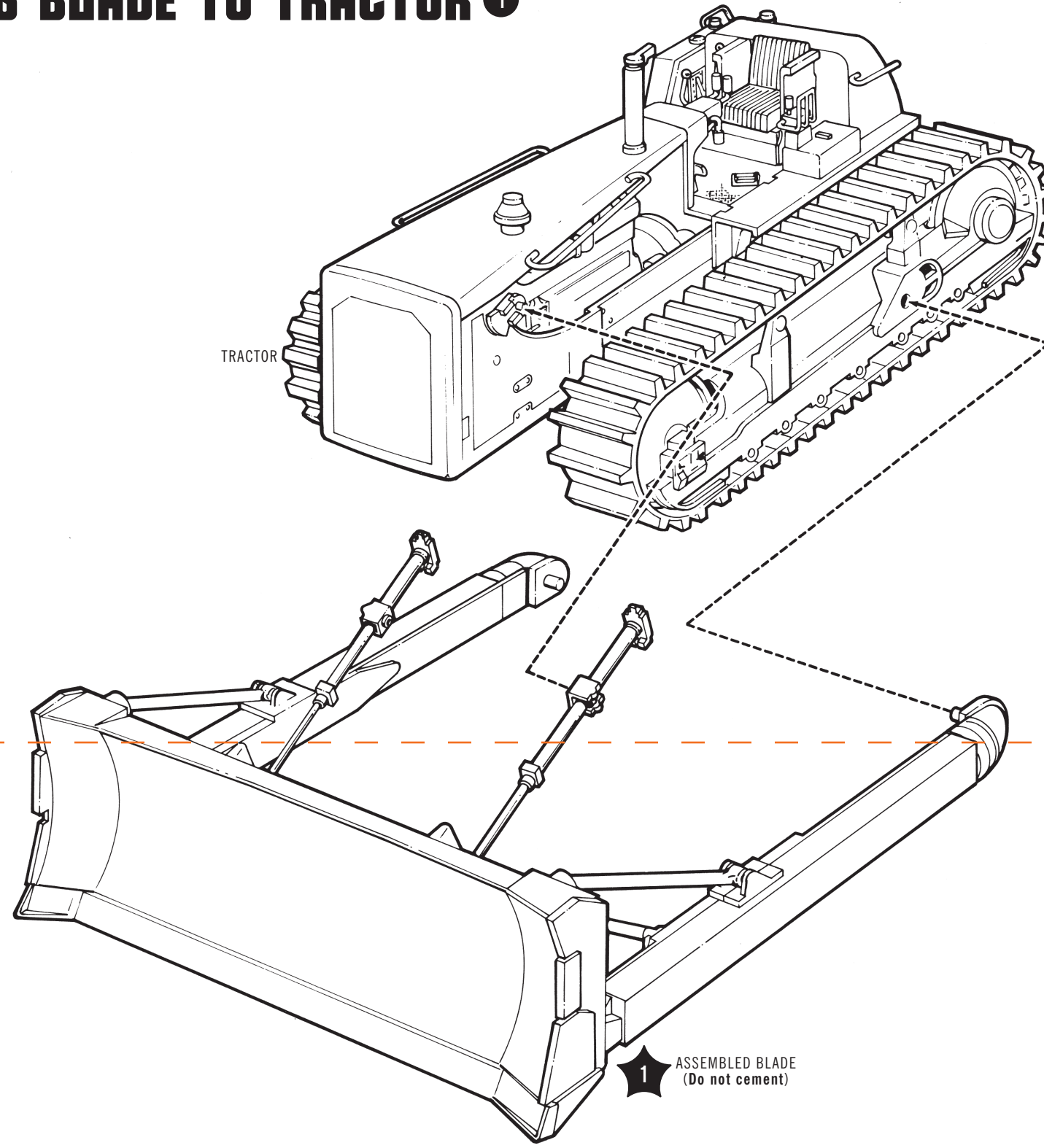
4 TRACK ASSEMBLY 1 - 20



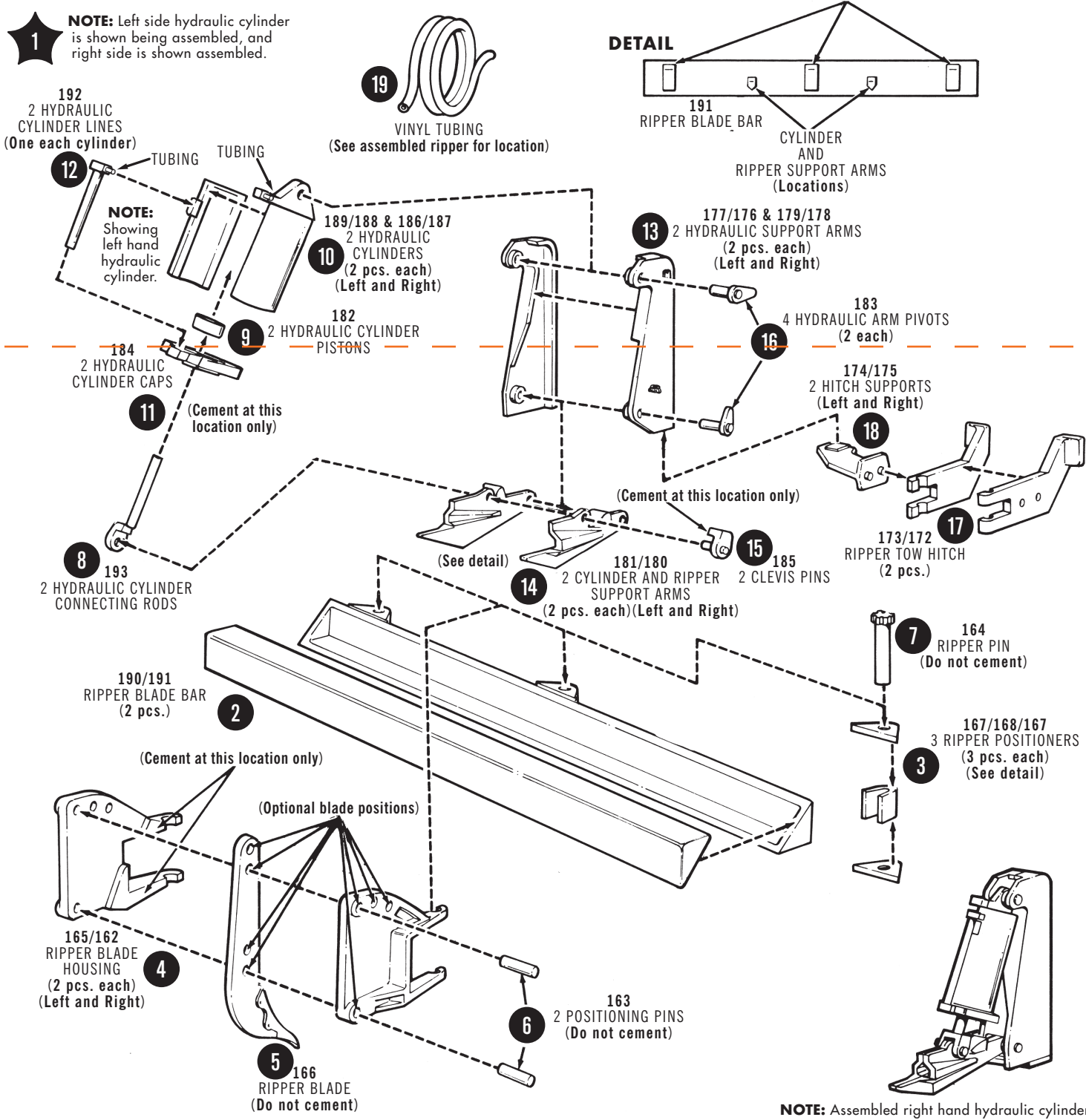
5 BLADE ASSEMBLY 1 - 16



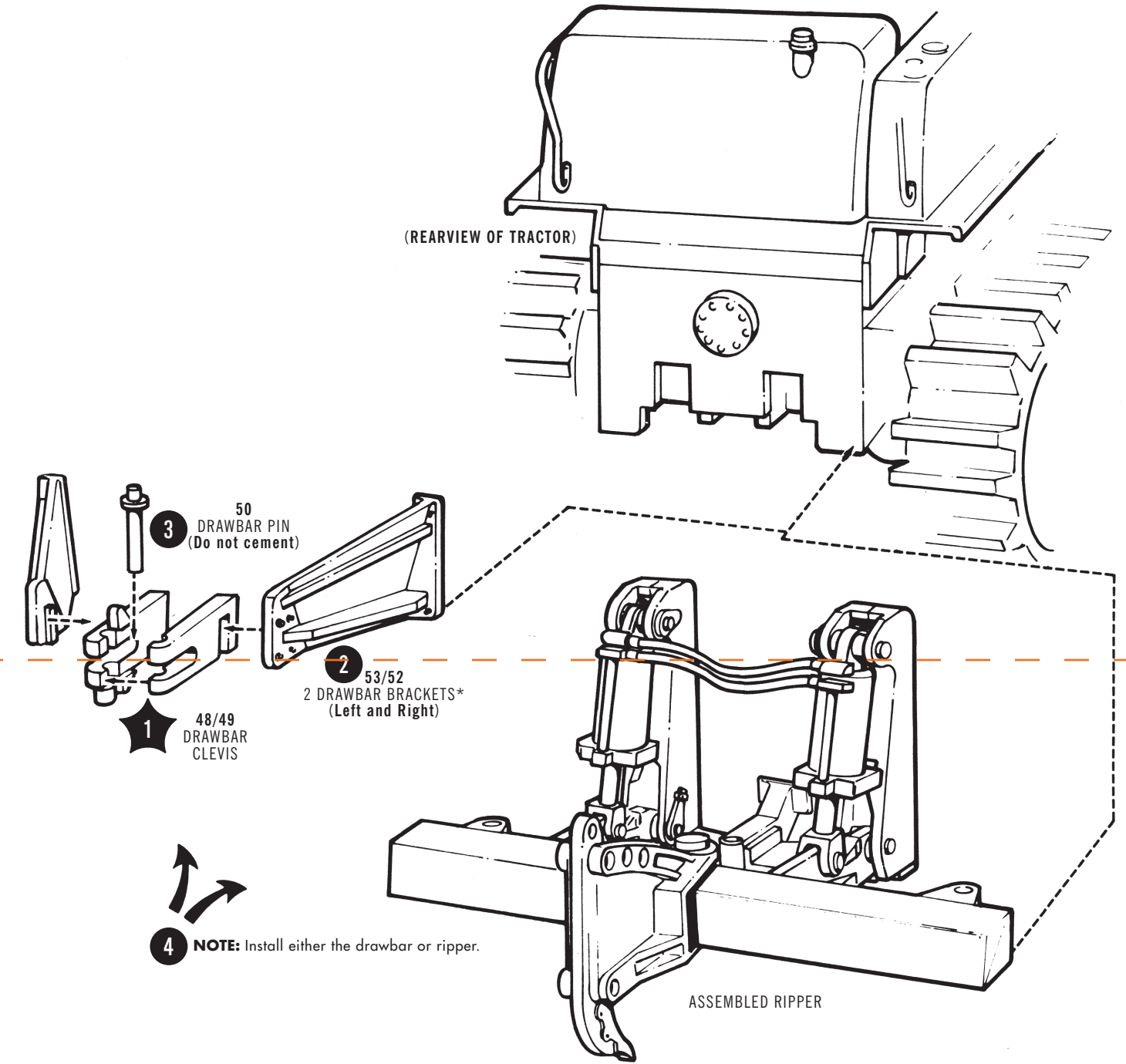
6 BLADE TO TRACTOR ①



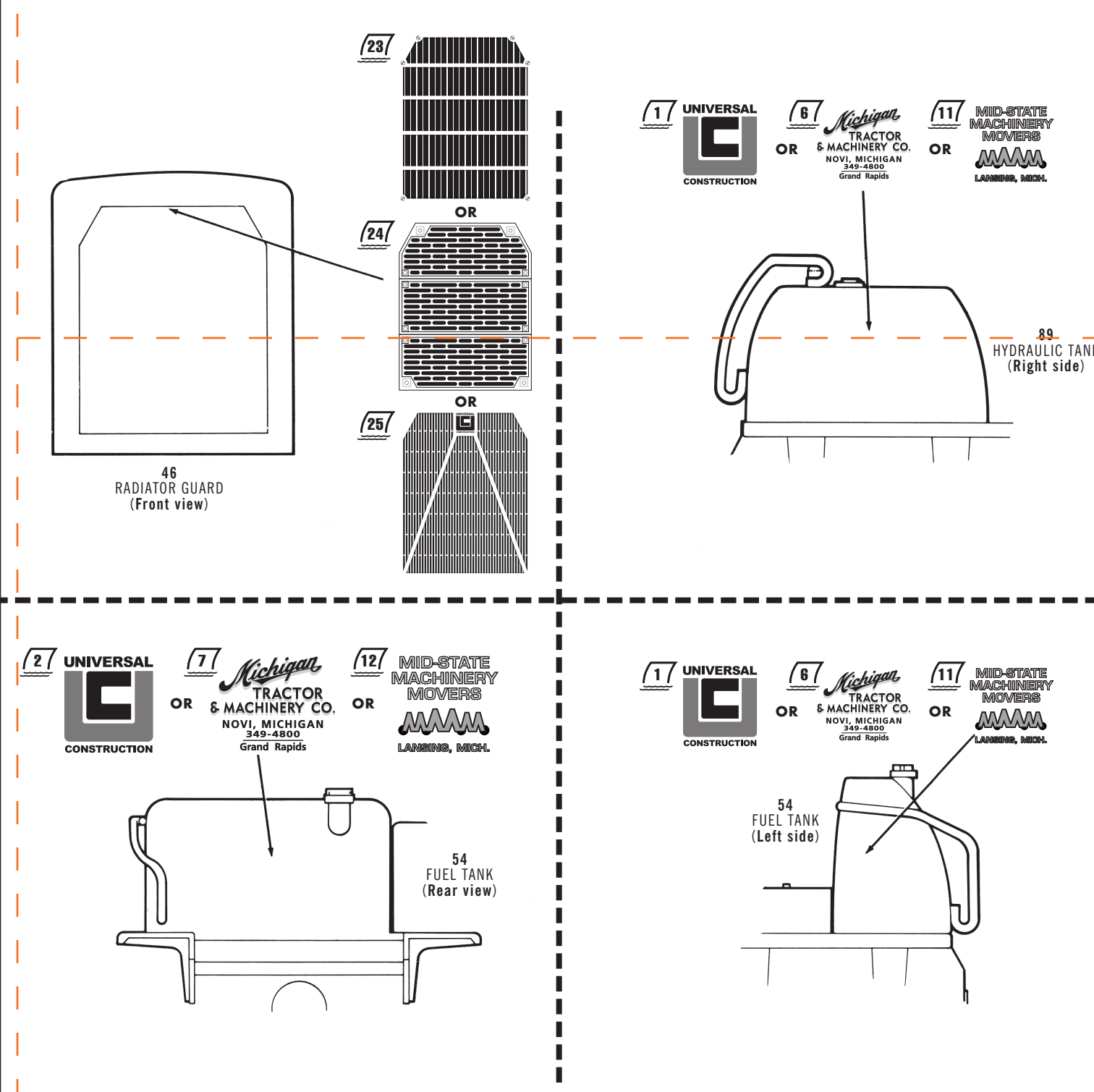
7 RIPPER OPTIONAL 1 - 19



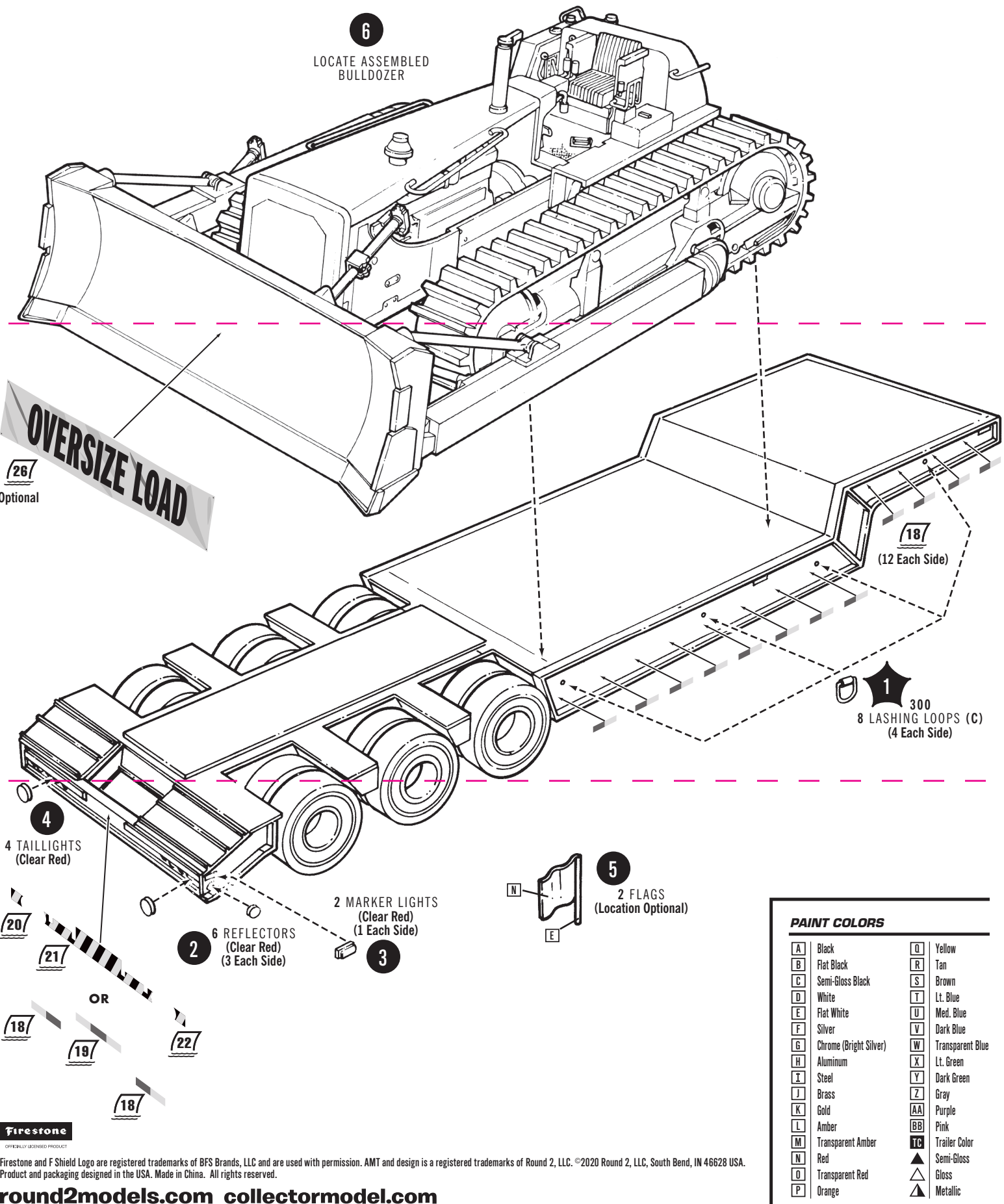
8 ACCESSORIES PLACEMENT ①-④



9 DECAL PLACEMENT



4. FINAL ASSEMBLIES



LOWBOY

DROP DECK LOWBED TRAILER

READ THIS BEFORE YOU BEGIN

Look over this instruction sheet carefully before you begin building. Follow the assembly instructions and "test-fit" the parts without cementing. This will familiarize you with the location of the parts.

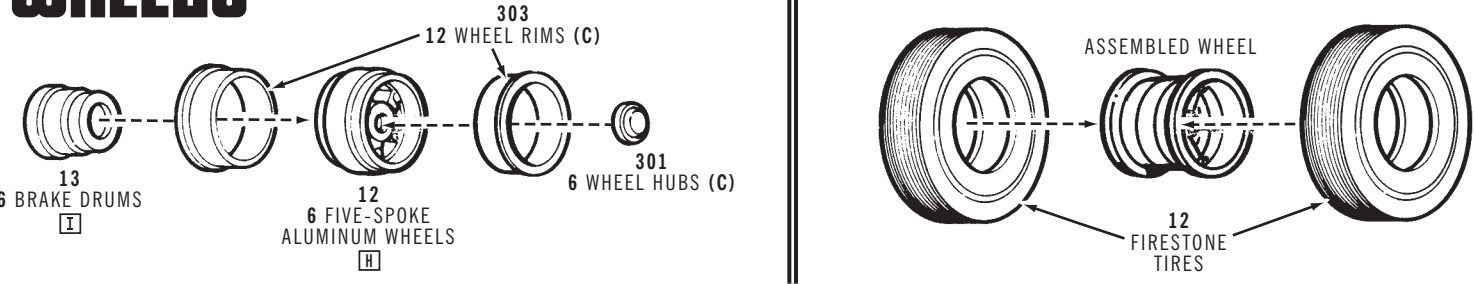
For the best results, the various sub-assemblies and components should be painted before any "chrome" parts are attached. For example: When attaching "non-chrome" body accessories, it is best to cement them in place and paint the body as a unit.

AMT® kits are molded from the finest High-Impact Styrene plastic. Use only paint and cement made for Styrene. Trim excess plastic from parts before joining. When attaching "chrome" parts, scrape plating away where parts are to be joined. Use just enough cement to join parts, and be careful not to smear cement on exposed surfaces.

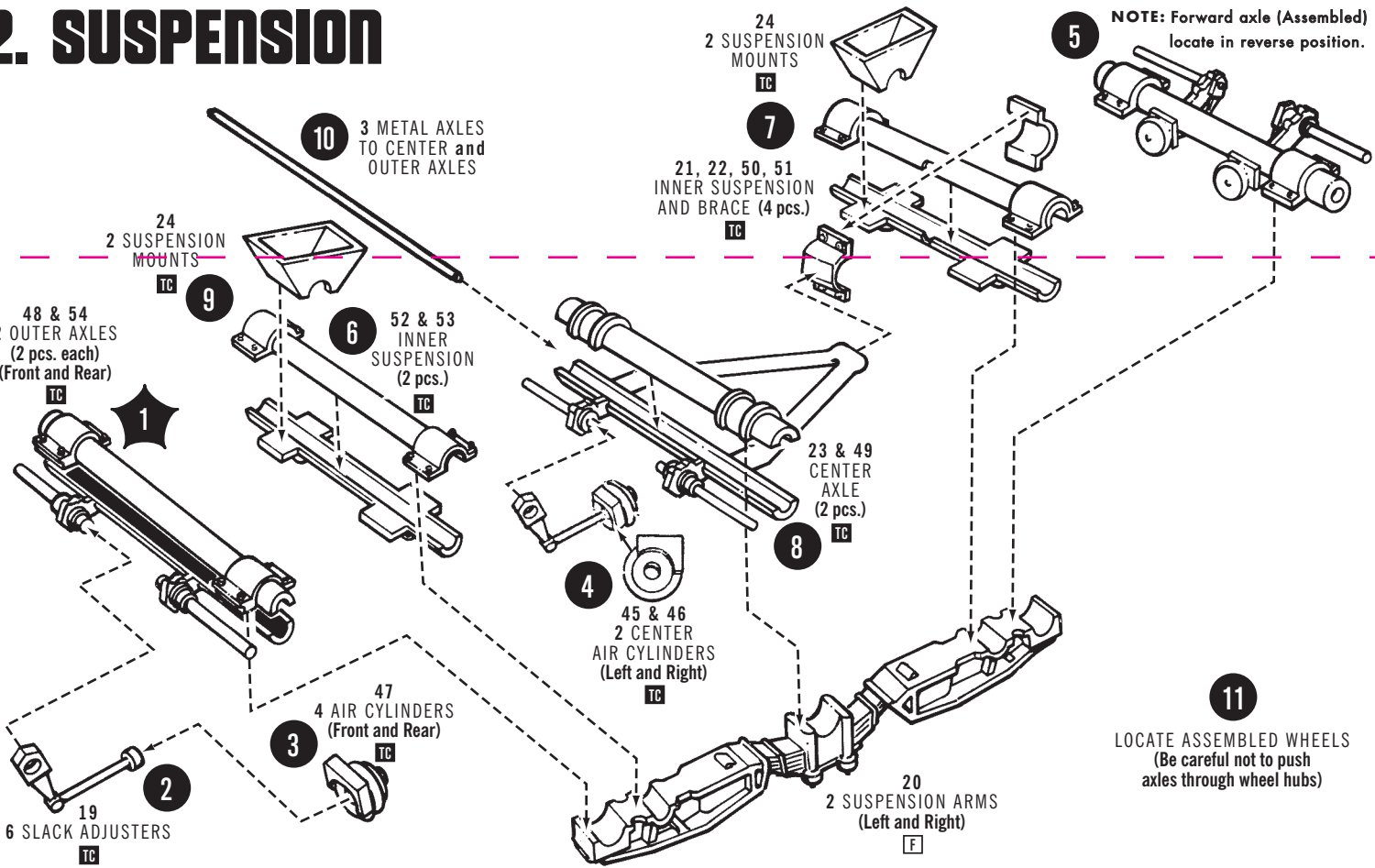
Built according to the instructions on this sheet, you should have no trouble assembling your kit. Just FOLLOW THE NUMBERS, as parts are numbered in order of assembly. (C) INDICATES "CHROME" PARTS.

Cement all parts unless otherwise indicated.

1. WHEELS

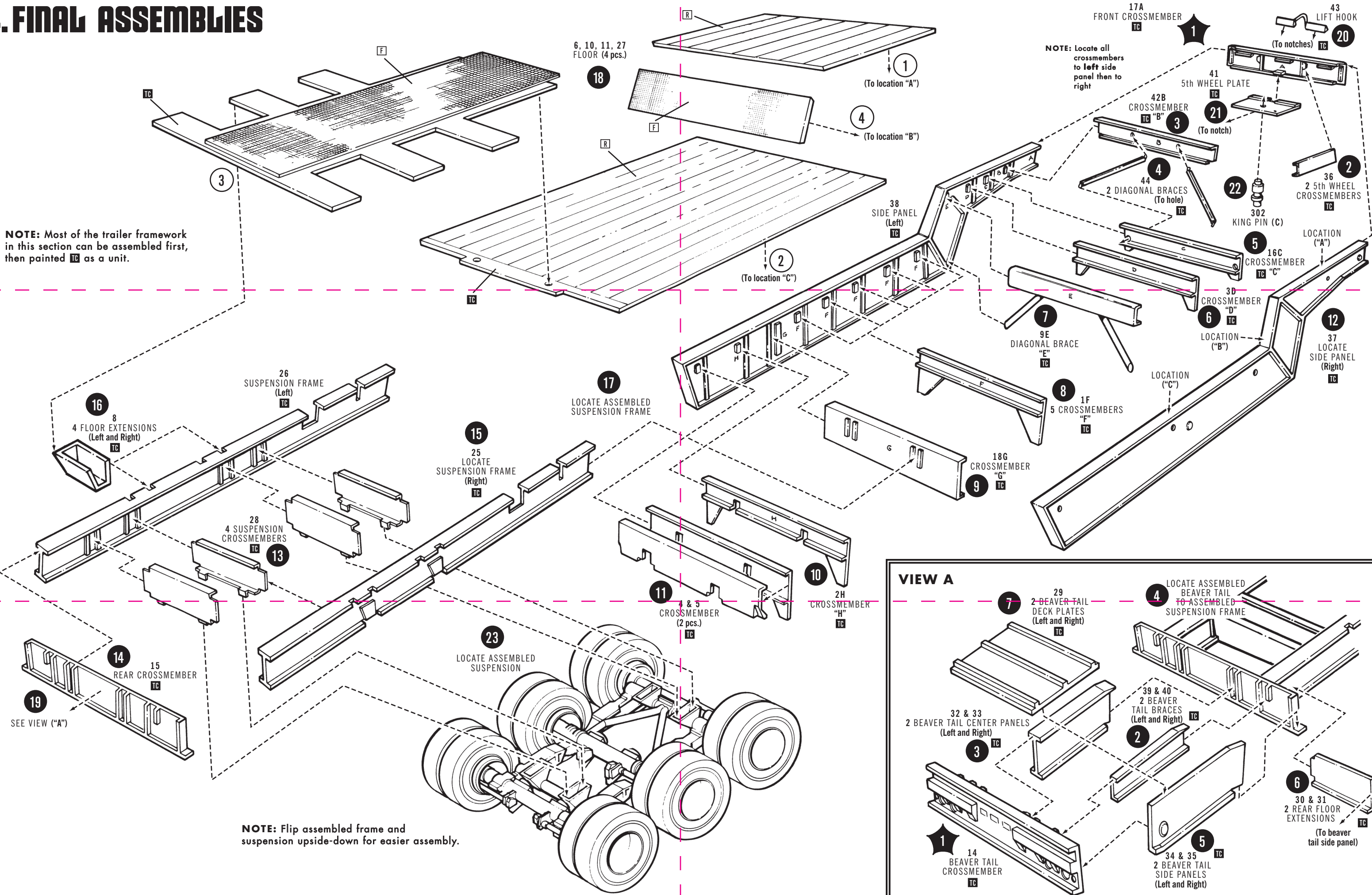


2. SUSPENSION



4. FINAL ASSEMBLIES

NOTE: Most of the trailer framework in this section can be assembled first, then painted TC as a unit.



NOTE: Flip assembled frame and suspension upside-down for easier assembly.