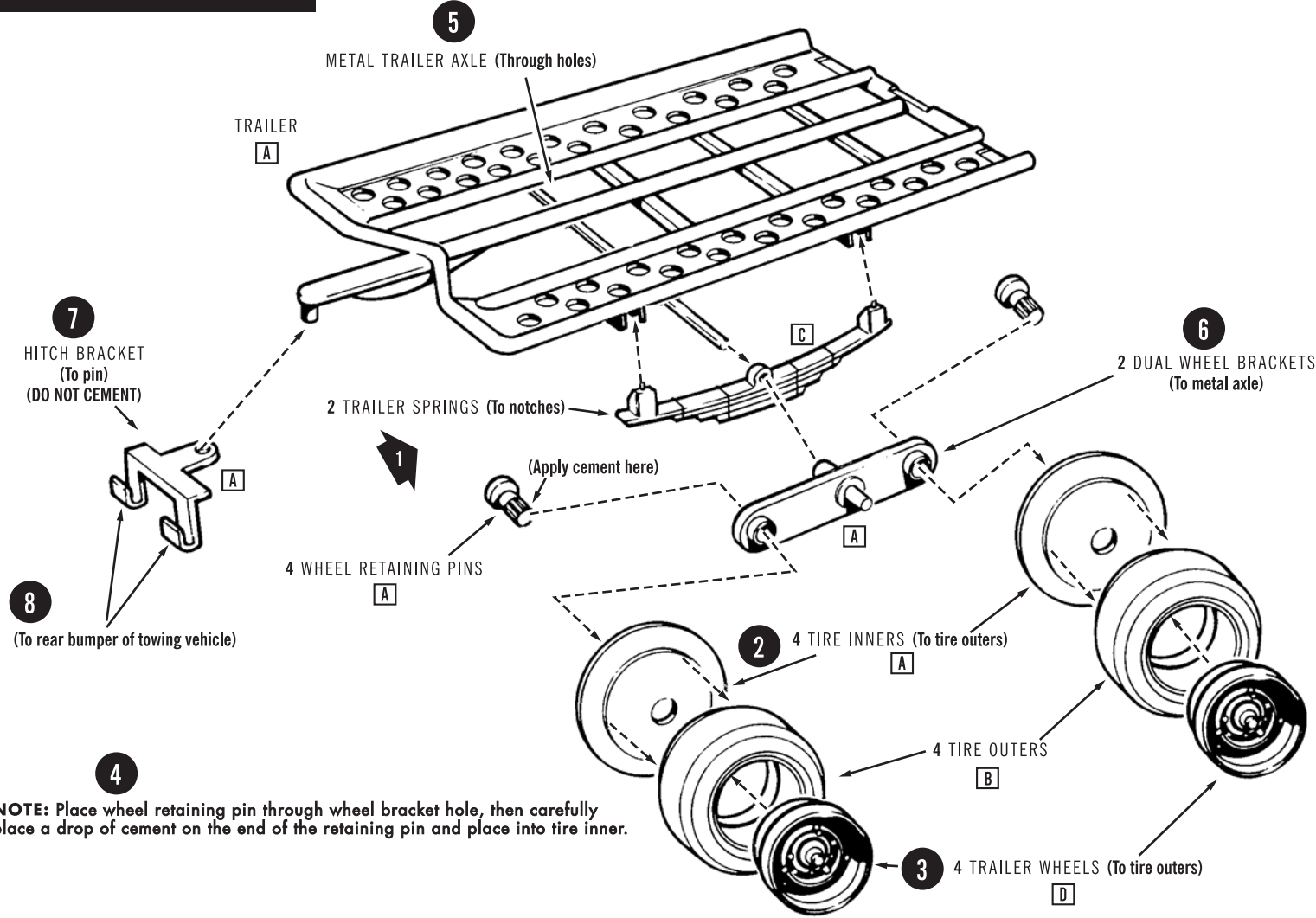
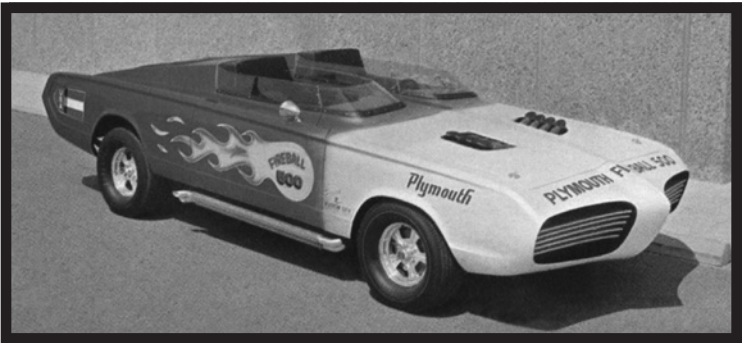


trailer



NOTE: Extra parts included with kit.



READ THIS BEFORE YOU BEGIN

Look over this instruction sheet carefully before you begin building. After you've planned your car, follow the assembly instructions and "test fit" the parts without cementing. This will familiarize you with the location of parts.

For the best results, the various sub-assemblies and components should be painted before any chrome parts are attached. For example: When attaching non-chrome body accessories, it is best to cement them in place and paint the body as a unit.

AMT® kits are molded from the finest high-impact styrene plastic. Use only paint and cement made for styrene. Trim excess plastic from parts before joining. When attaching "chrome" parts, scrape plating away where parts are to be joined. Use just enough cement to join parts, and be careful not to smear cement on exposed surfaces.

To duplicate original colors of George Barris's "Fireball 500" from American

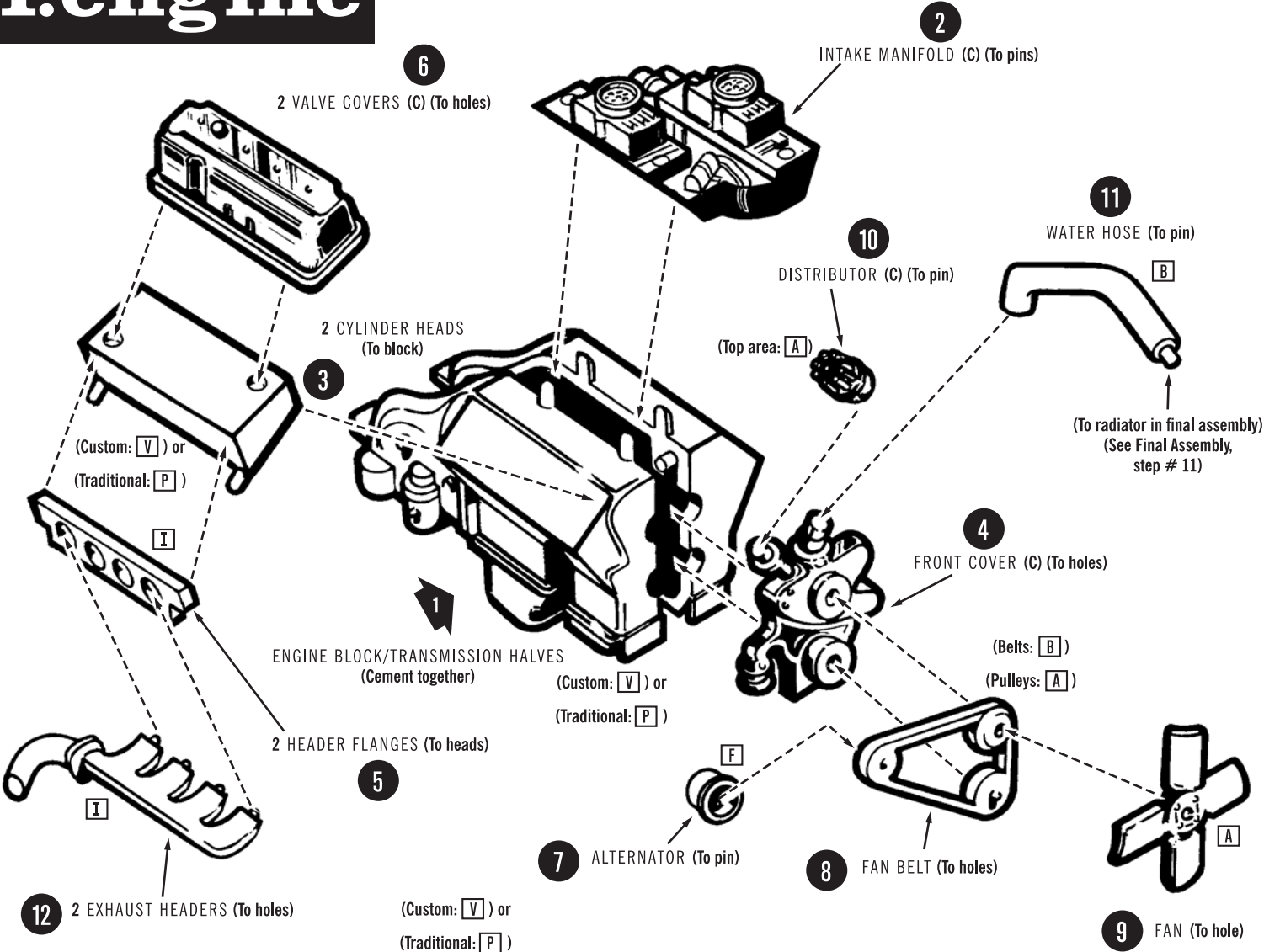
International's movie of the same name, use this following procedure: Using only custom spray lacquers, dust on two coats of Base Gold, applying more if necessary to cover entire body and components. After this has thoroughly dried, starting from the nose and ending at the front of the door line, fog on two coats of White. When completely dry apply succeeding heavier coats until the desired finish is achieved leaving the fogged effect towards the front of the door line. After this has thoroughly dried, starting from the rear of the body to the center of the door, fog on two coats of Ruby Red. When completely dry, apply succeeding heavier coats until desired finish has been achieved, again leaving the fogged effect towards the center of the door.

Built according to the instructions on this sheet you should have no trouble assembling or painting your "Fireball 500". Just FOLLOW THE NUMBERS as parts are numbered in order of assembly. NOTE: (C) indicates chrome parts.

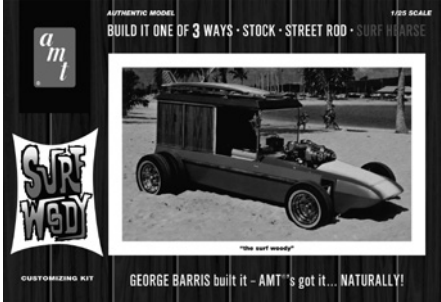
BASIC ASSEMBLIES

1.engine

* NOTE: Be sure to carefully read the assembling and painting instructions above before attempting to build or paint this kit.



MORE GEORGE BARRIS KITS FROM AMT!



AMT976 (Molded in White)
AMT977 (Molded in Orange)



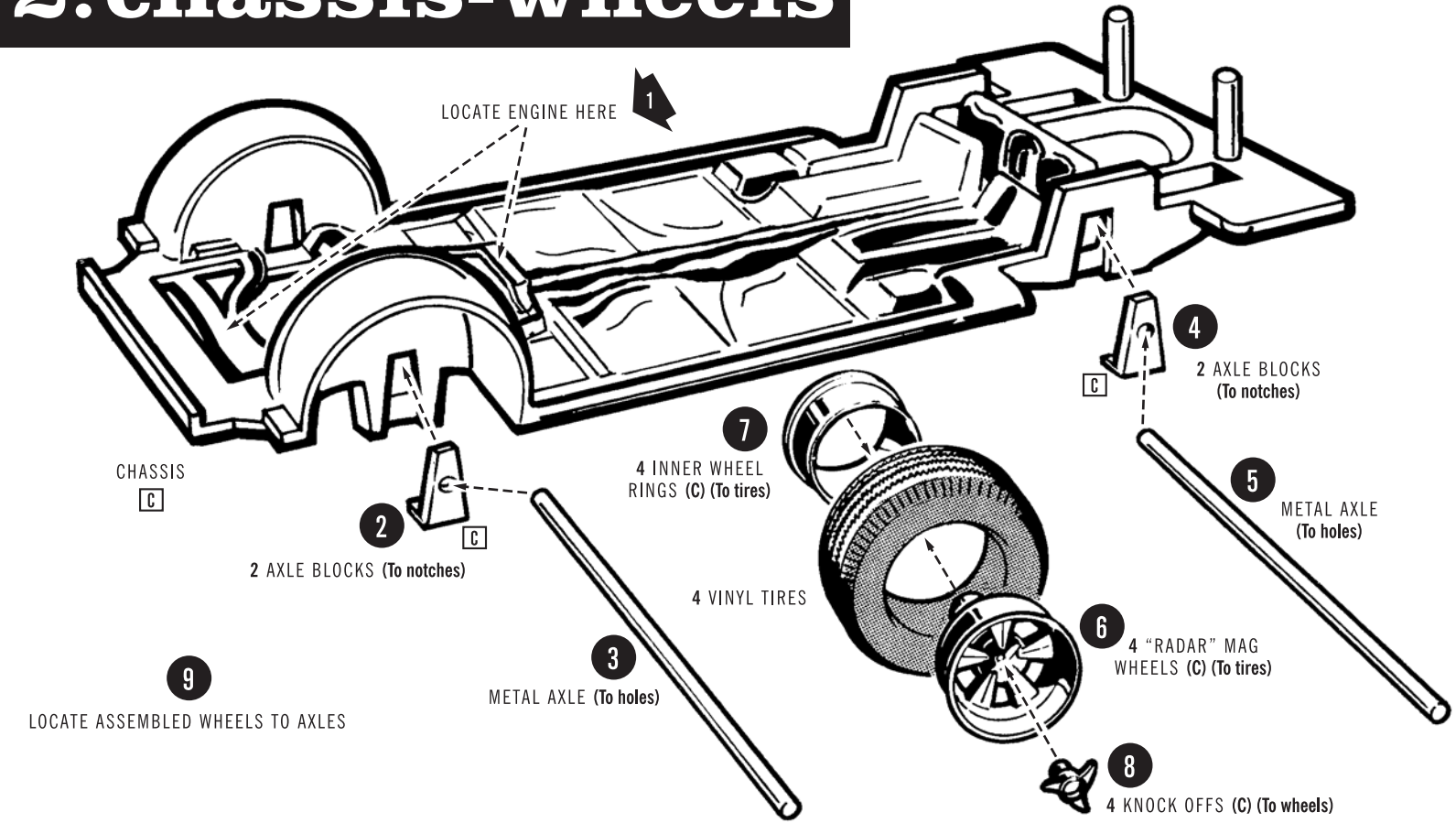
AMT1017 Drag-U-La (Molded in Gold)
Barris Koach (Molded in Black)

PAINT COLORS

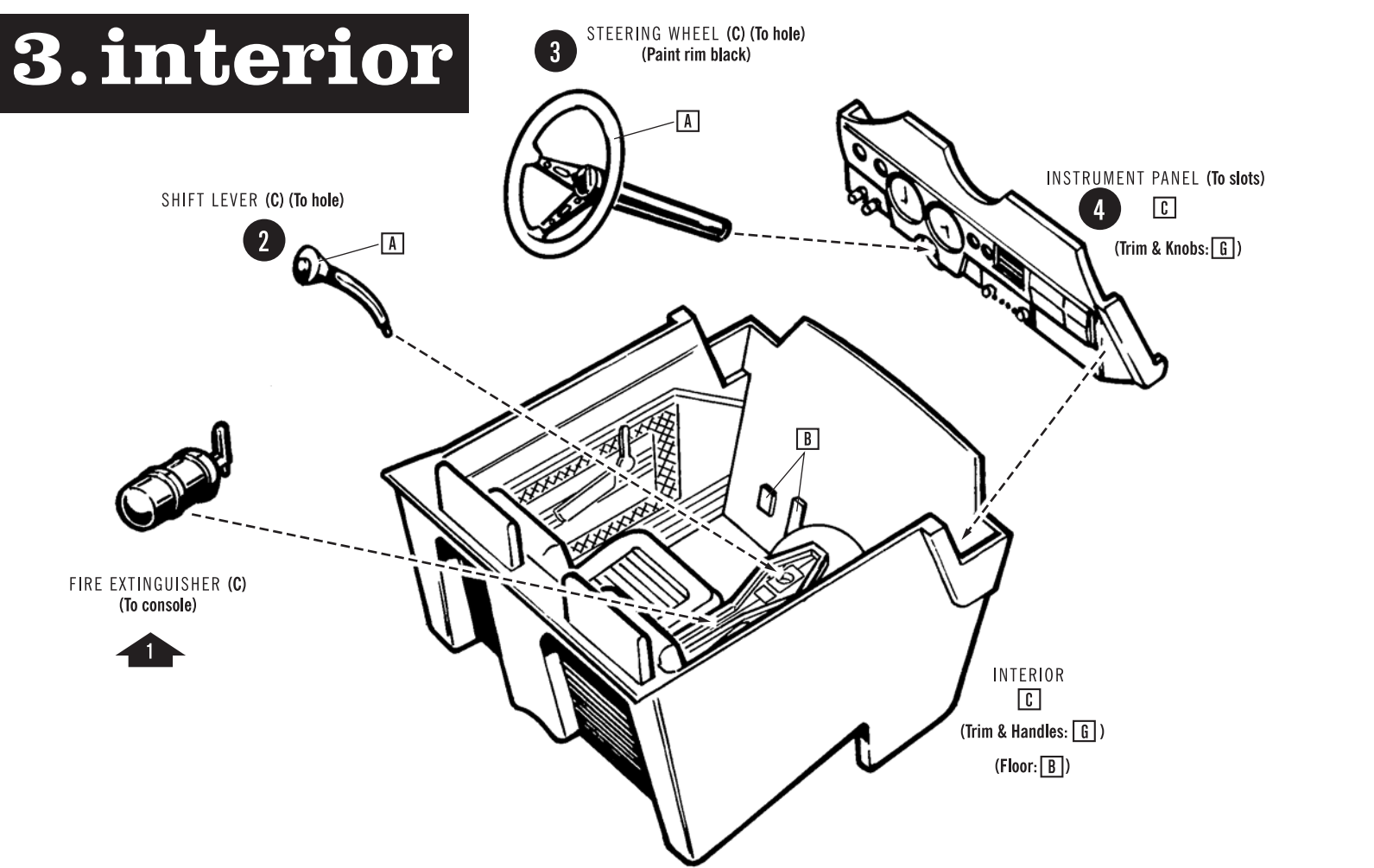
A	Black	Q	Yellow
B	Flat Black	R	Tan
C	Semi-Gloss Black	S	Brown
D	White	T	Lt. Blue
E	Flat White	U	Med. Blue
F	Silver	V	Dark Blue
G	Chrome (Bright Silver)	W	Transparent Blue
H	Aluminum	X	Lt. Green
I	Steel	Y	Dark Green
J	Brass	Z	Gray
K	Gold	AA	Purple
L	Amber	BB	Pink
M	Transparent Amber	BC	Body Color
N	Red	▲	Semi-Gloss
O	Transparent Red	△	Gloss
P	Orange	▲	Metallic

Chrysler, Plymouth and related logos, vehicle model names, and trade dresses are trademarks of FCA US, LLC and are used under license. © 2017 FCA US LLC. George Barris, Barris Kustom Ind., are registered trademarks of Barris Kustom Ind. And is granted under license to Round 2 LLC. www.barris.com Firestone and F Shield Logo are registered trademarks of BFS Brands, LLC and are used with permission. AMT and design is a registered trademark of Round 2, LLC. ©2017 Round 2, LLC, South Bend, IN 46628 USA. Product and packaging designed in the USA. Made in China. All rights reserved.

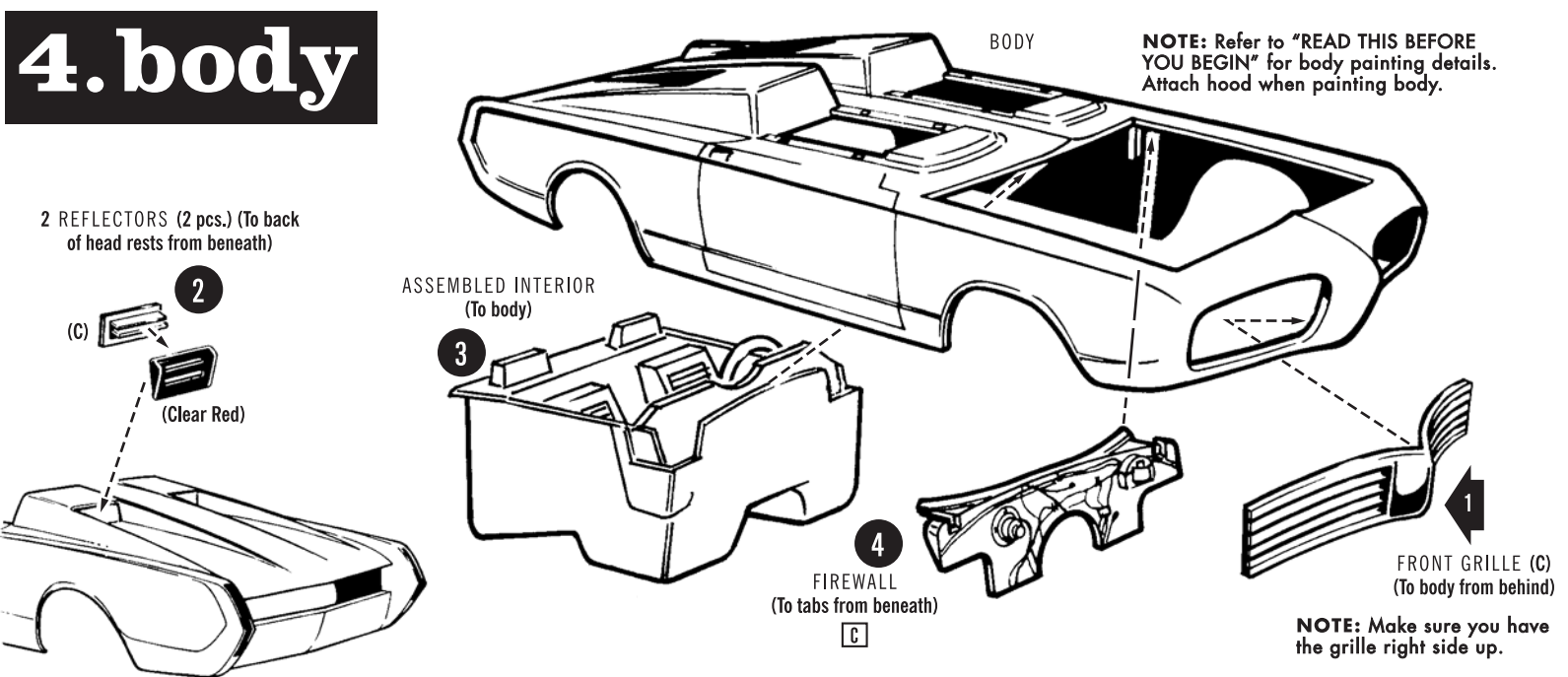
2.chassis-wheels



3.interior



4.body



FINAL ASSEMBLY

