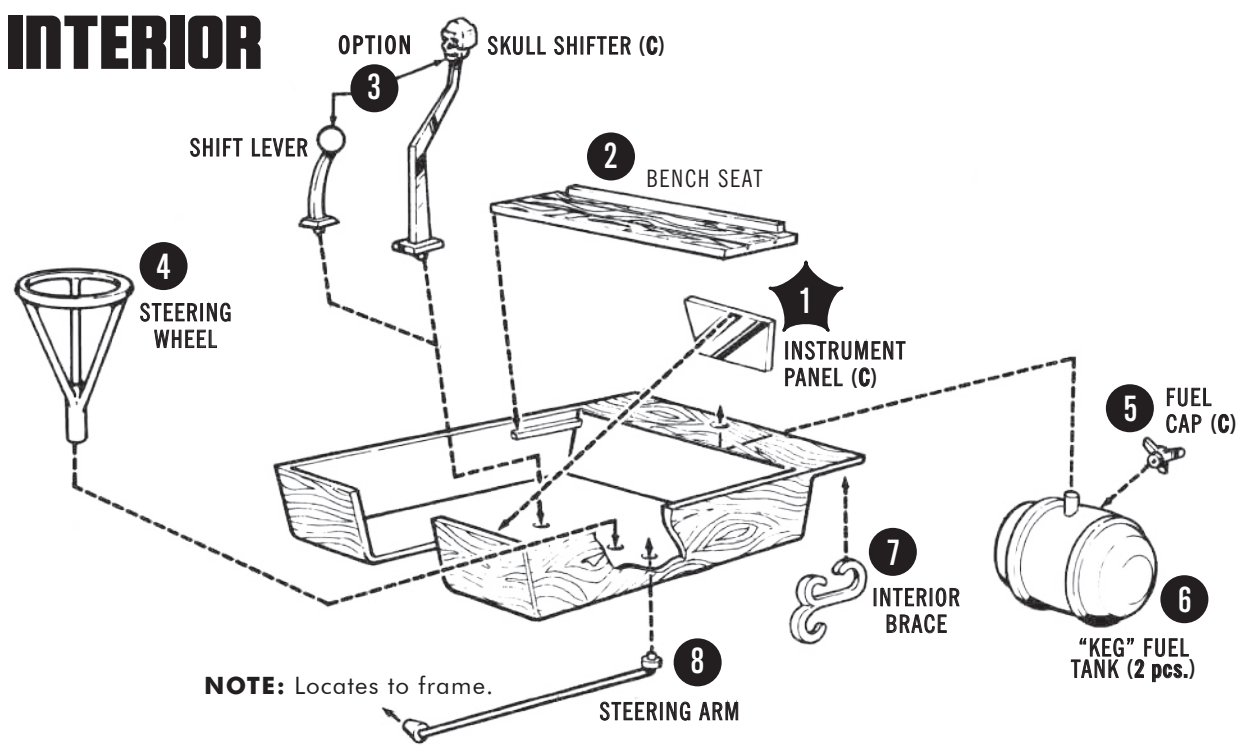
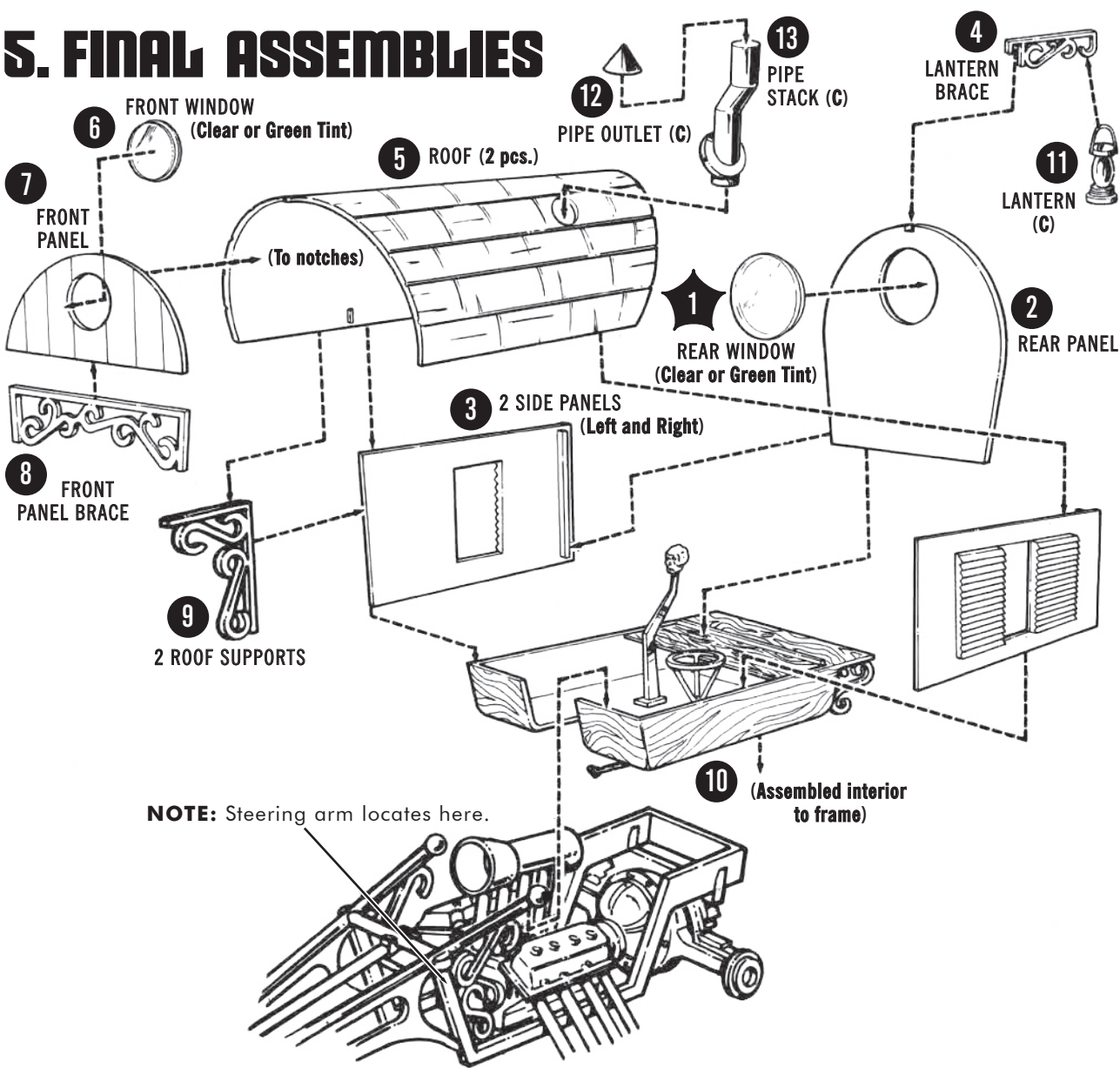


4. INTERIOR



5. FINAL ASSEMBLIES



Gypsy Wagon

A1067-200

READ THIS BEFORE YOU BEGIN

Look over this instruction sheet carefully before you begin building. Follow the assembly instructions and "test fit" the parts without cementing. This will familiarize you with the location of parts.

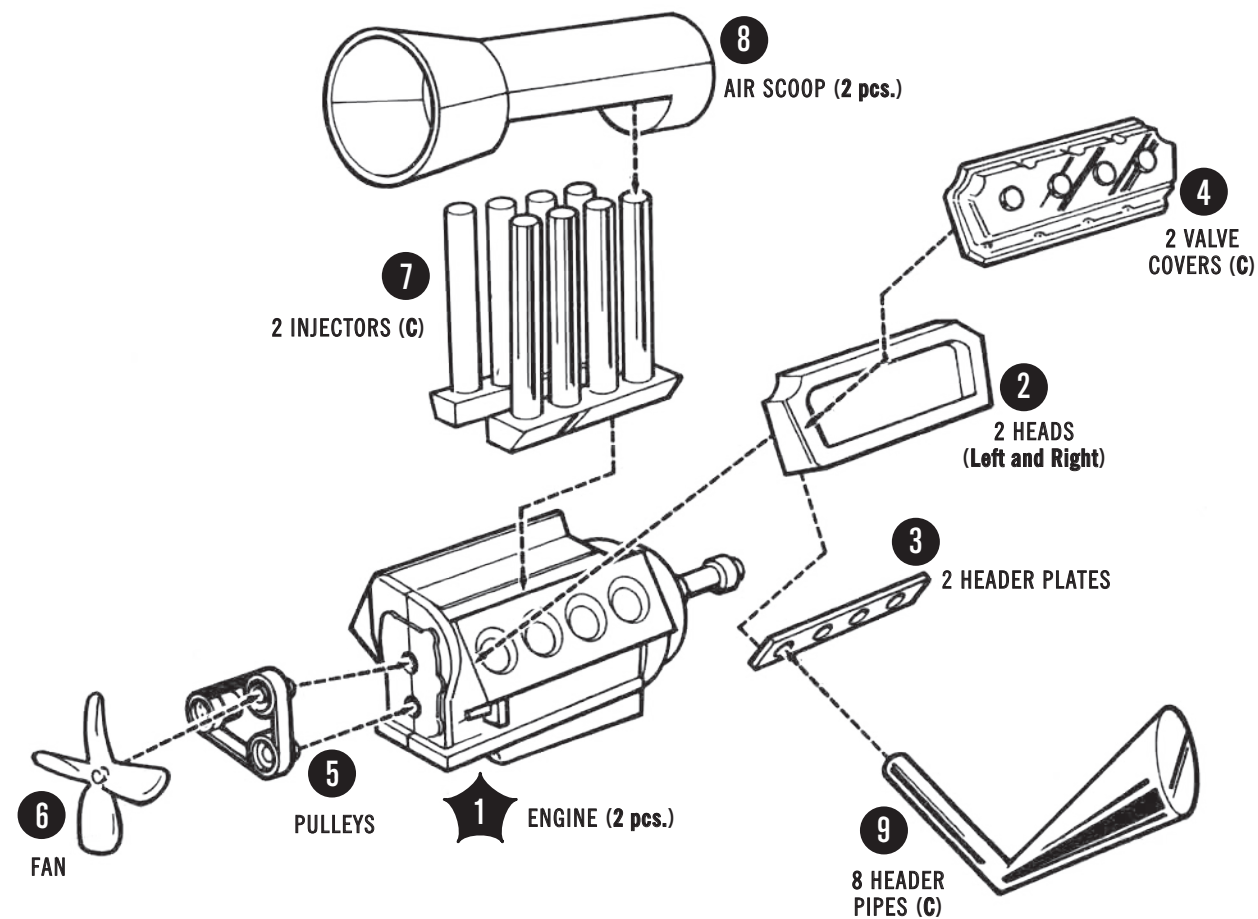
For best results, the various sub-assemblies and components should be painted before any "chrome" parts are attached. For example: When attaching "non-chrome" body accessories, it is best to cement them in place and paint the body as a unit.

AMT® kits are molded from the finest High-Impact Styrene plastic. Use only paint and cement made for Styrene. Trim excess plastic from parts before joining. When attaching "chrome" parts, scrape plating away where parts are to be joined. Use just enough cement to join parts and be careful not to smear cement on exposed surfaces.

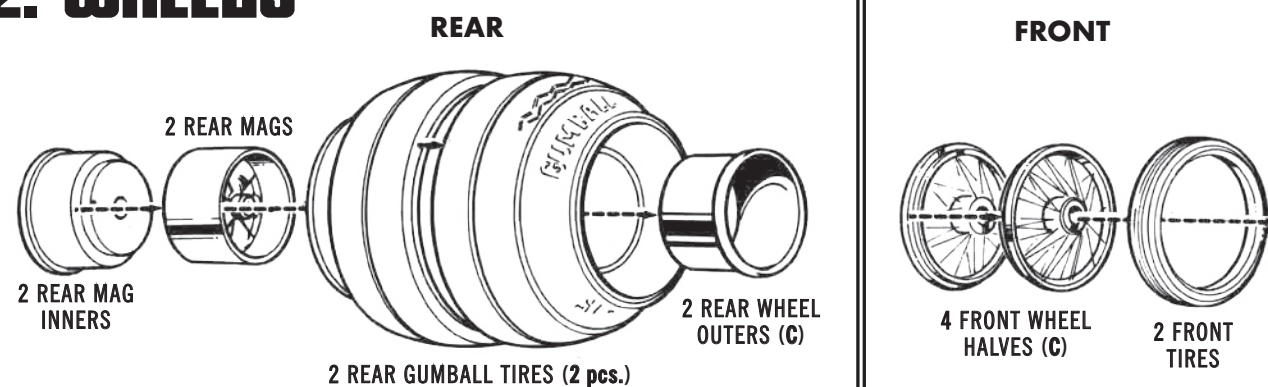
Built according to the instructions on this sheet, you should have no trouble assembling your kit. Just FOLLOW THE NUMBERS, as the parts are numbered in order of assembly. (C) INDICATES "CHROME" PARTS.

Cement all parts unless otherwise indicated.

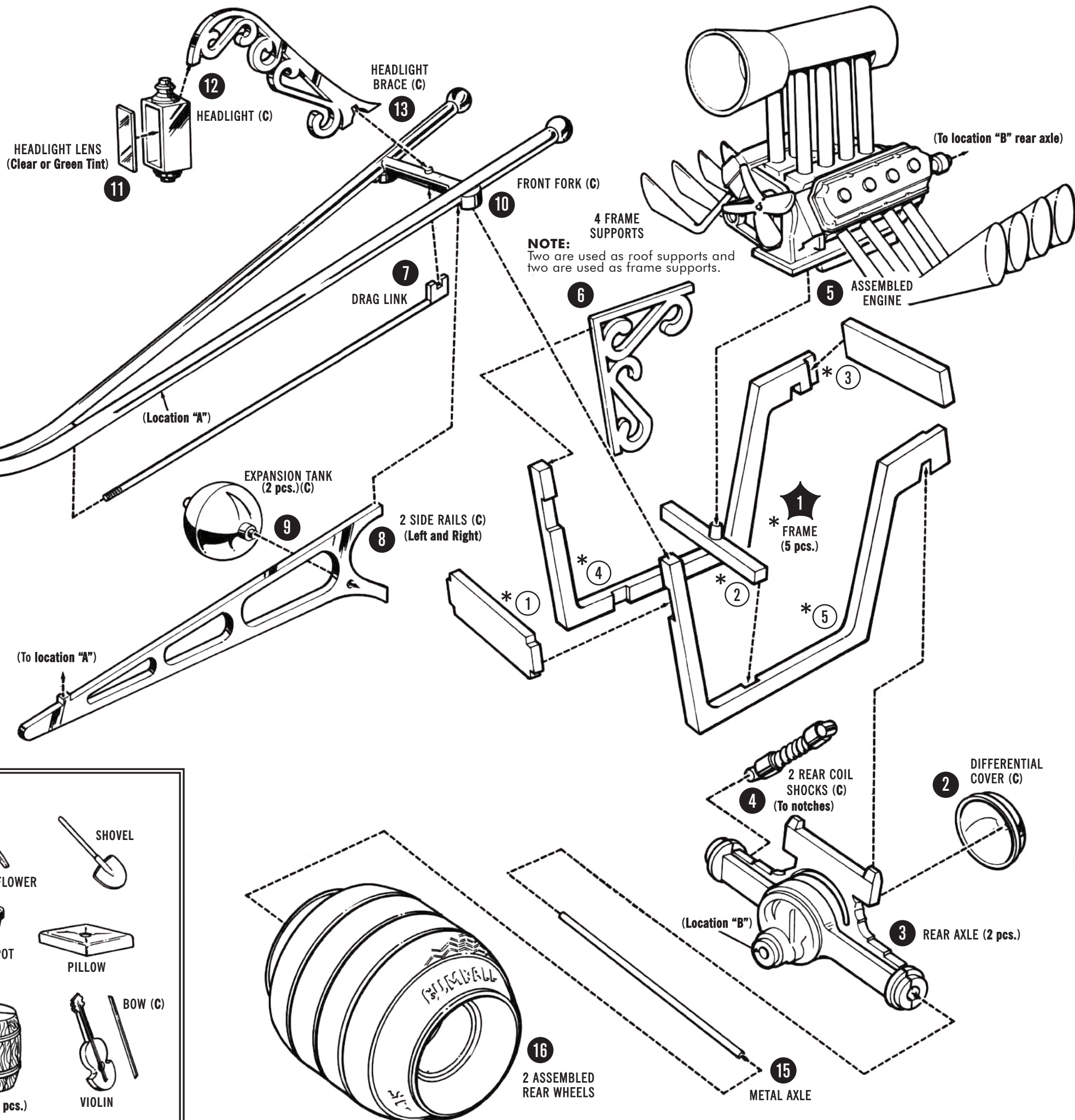
1. ENGINE



2. WHEELS



3. CHASSIS



CAMPFIRE ACCESSORIES

OPTIONAL LOCATION (CREATE A DIORAMA!)

