

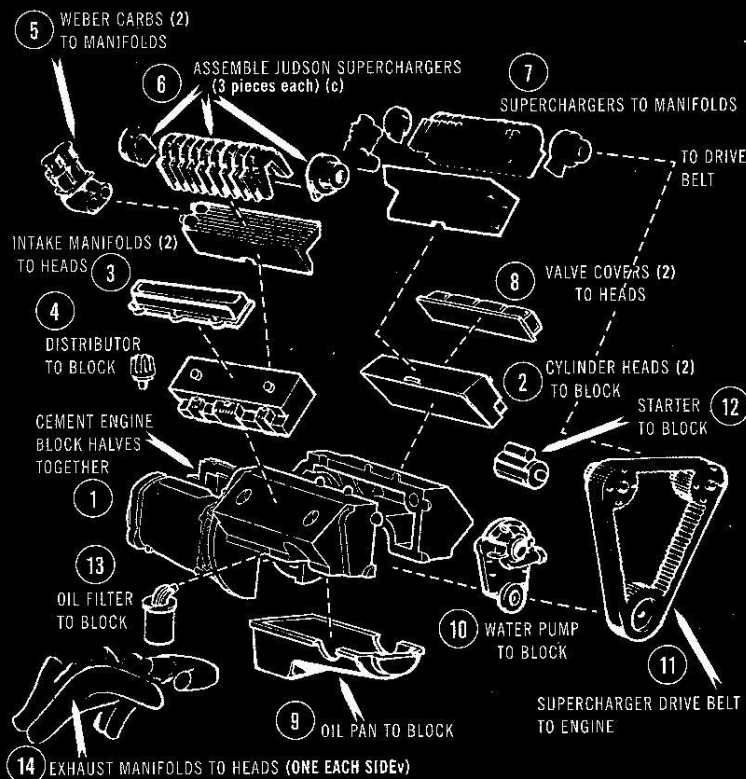
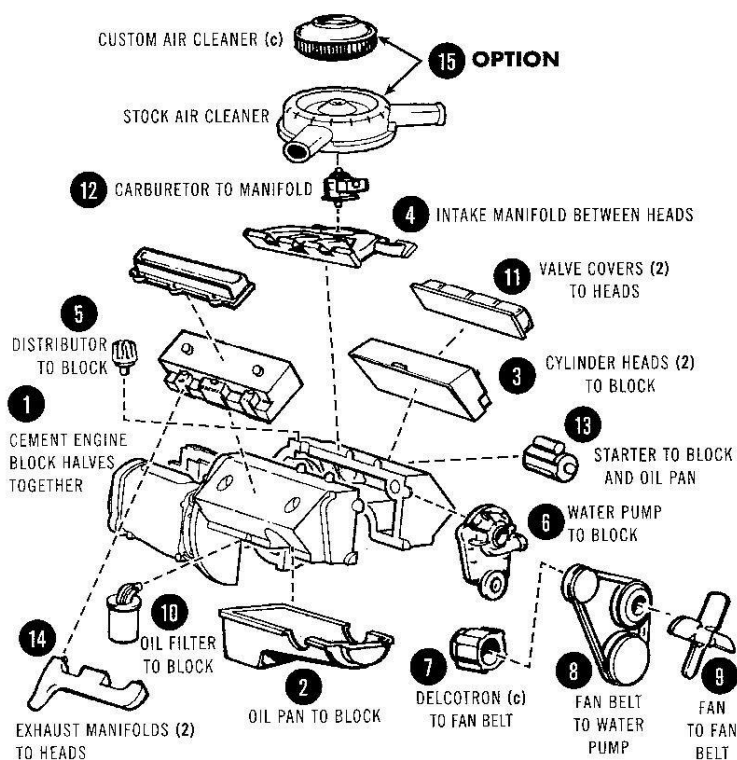
BASIC ASSEMBLIES

PARTS ARE NUMBERED IN ORDER OF ASSEMBLY

STOCK-CUSTOM

1. engine

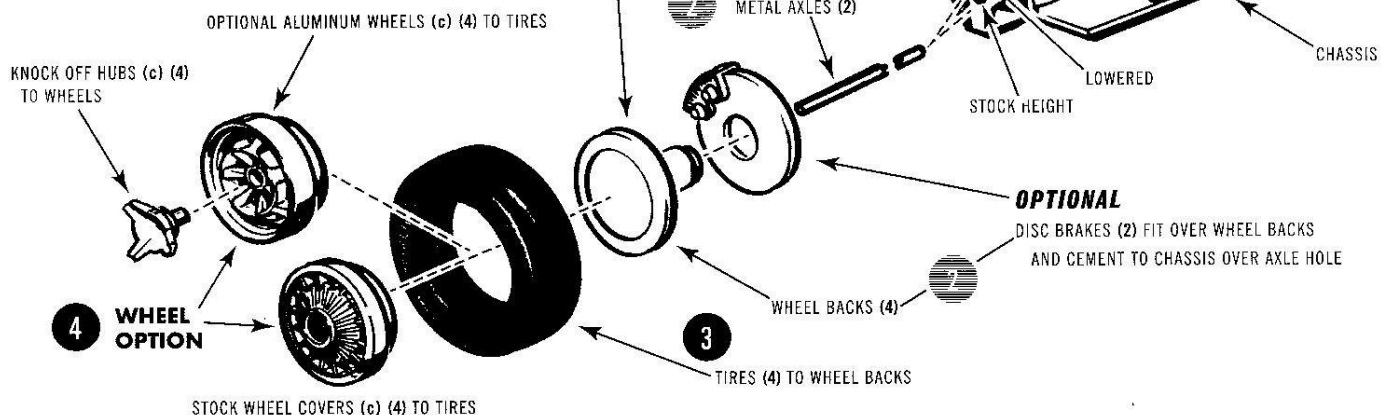
COMPETITION



2. wheels-chassis

- 2 PRESS WHEEL BACK ONTO AXLE—
—PLACE IN CHASSIS—PRESS REMAINING
WHEEL BACK ONTO AXLE

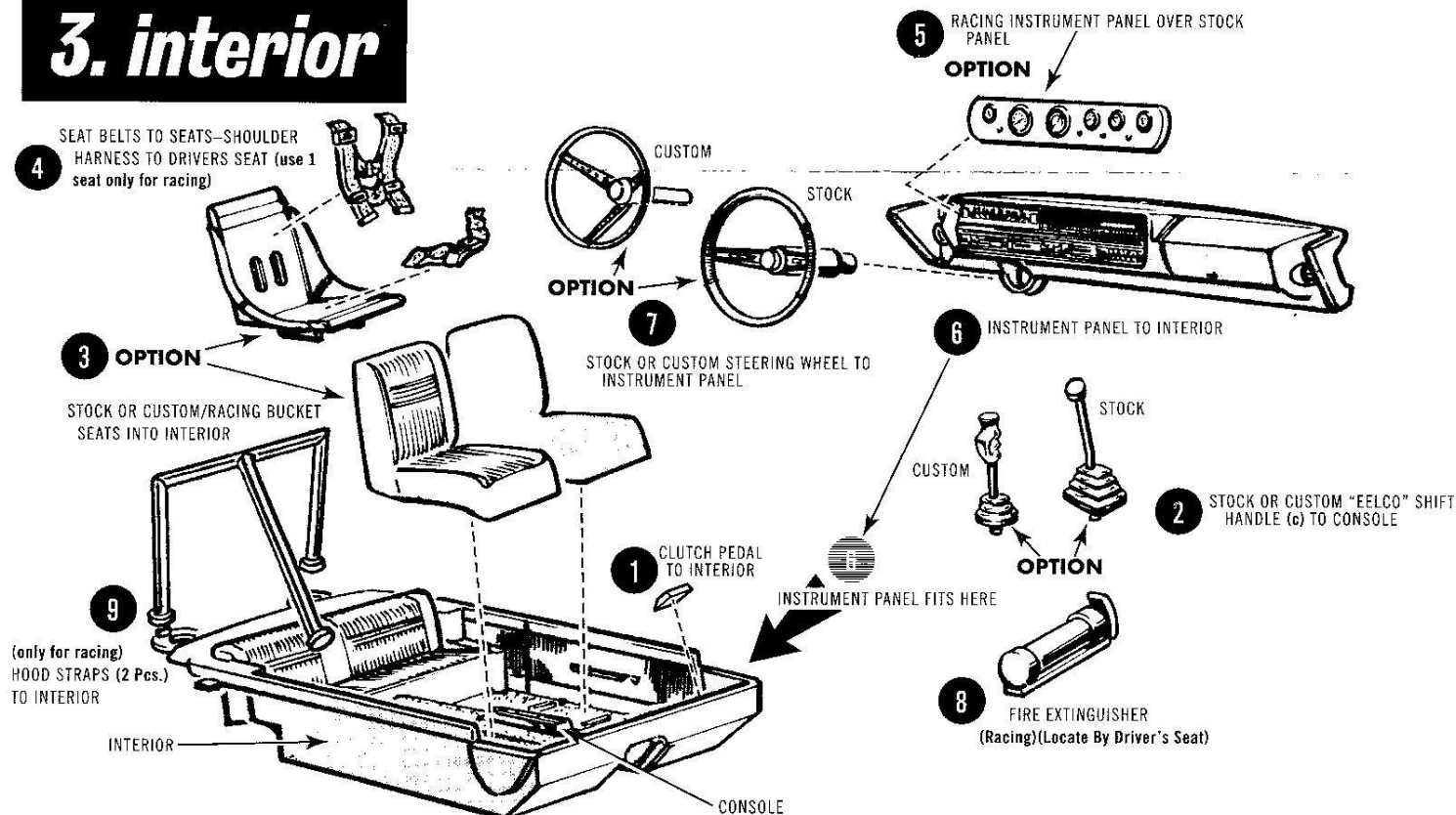
- 1 CEMENT ASSEMBLED ENGINE TO CHASSIS



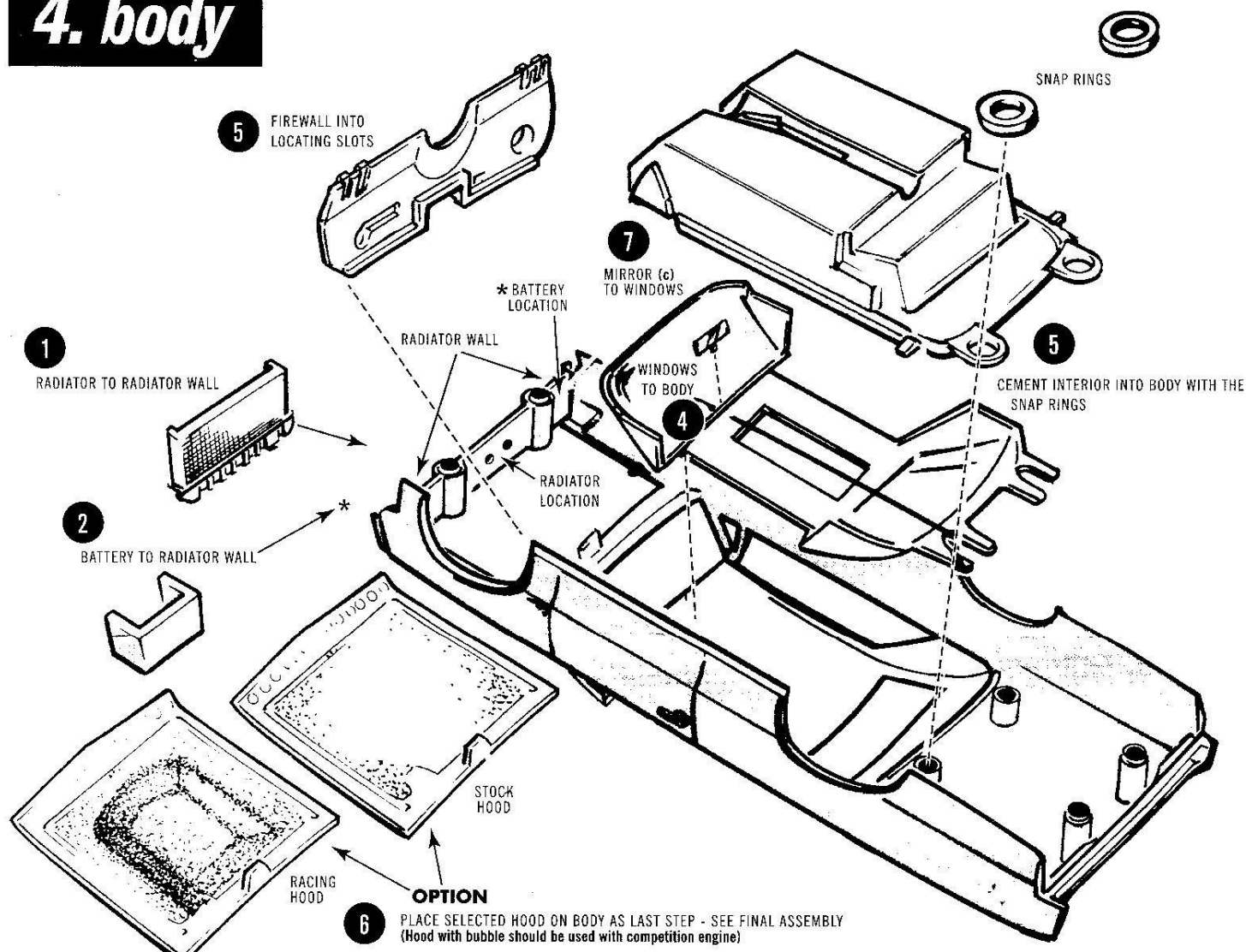
3. interior

- 5 RACING INSTRUMENT PANEL OVER STOCK
PANEL
OPTION

3. interior



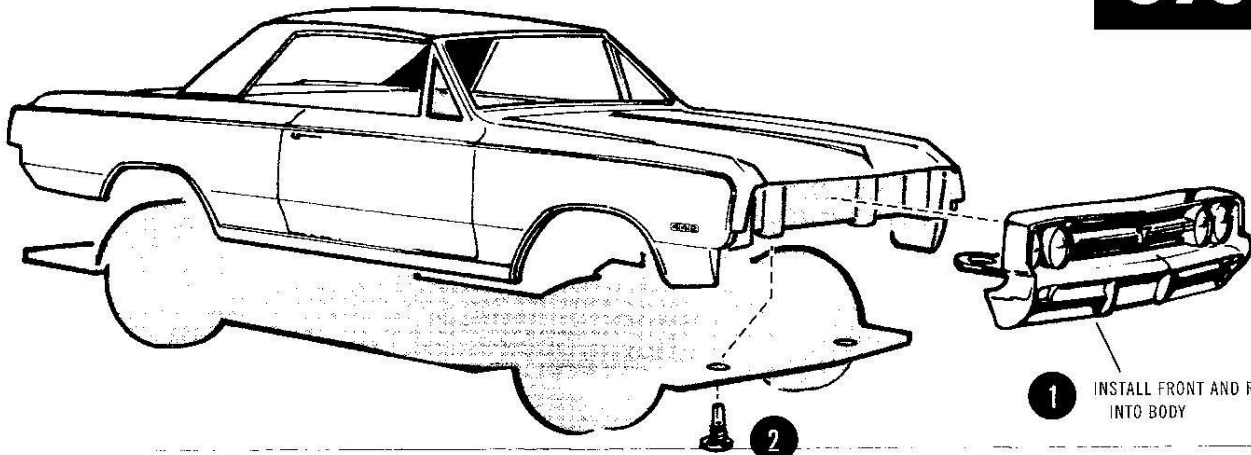
4. body



FINAL ASSEMBLIES

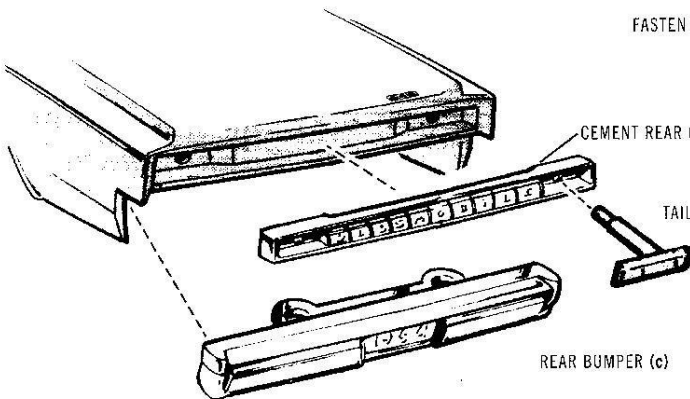
PARTS ARE NUMBERED IN ORDER OF ASSEMBLY

STOCK



1 INSTALL FRONT AND REAR BUMPERS (c) INTO BODY

2 FASTEN CHASSIS TO BODY WITH 4 SCREWS

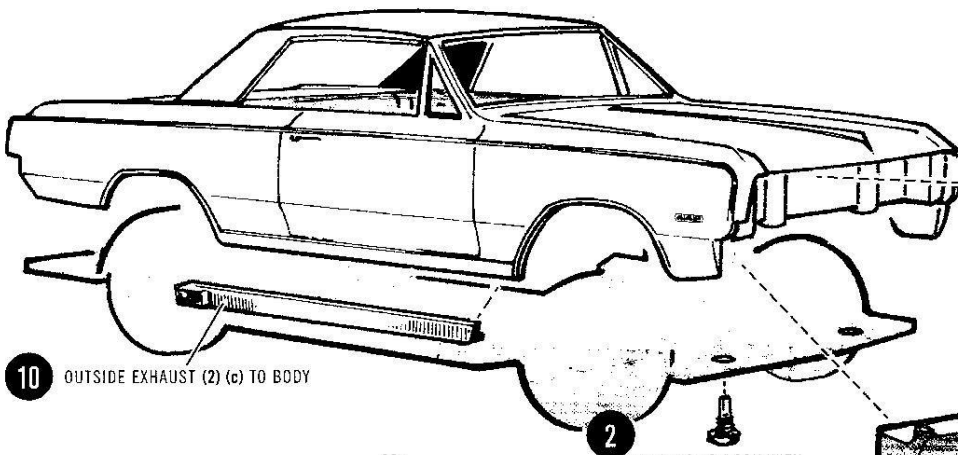


3 CEMENT REAR CHROME TRIM INTO BODY

4 TAILLIGHTS (2) (red) INTO HOUSINGS

REAR BUMPER (c)

CUSTOM



4 CUSTOM GRILLE (c) INTO BODY

3 CUSTOM LENSES (clear) (2) INTO CUSTOM GRILLE

2 CHASSIS TO BODY WITH METAL SCREWS (4)

7 TAILLIGHT HOUSING (c) INTO BODY

6 CUSTOM TAILLIGHTS (2) (red) INTO HOUSING

1 CEMENT FRONT AND REAR PANS TO BODY

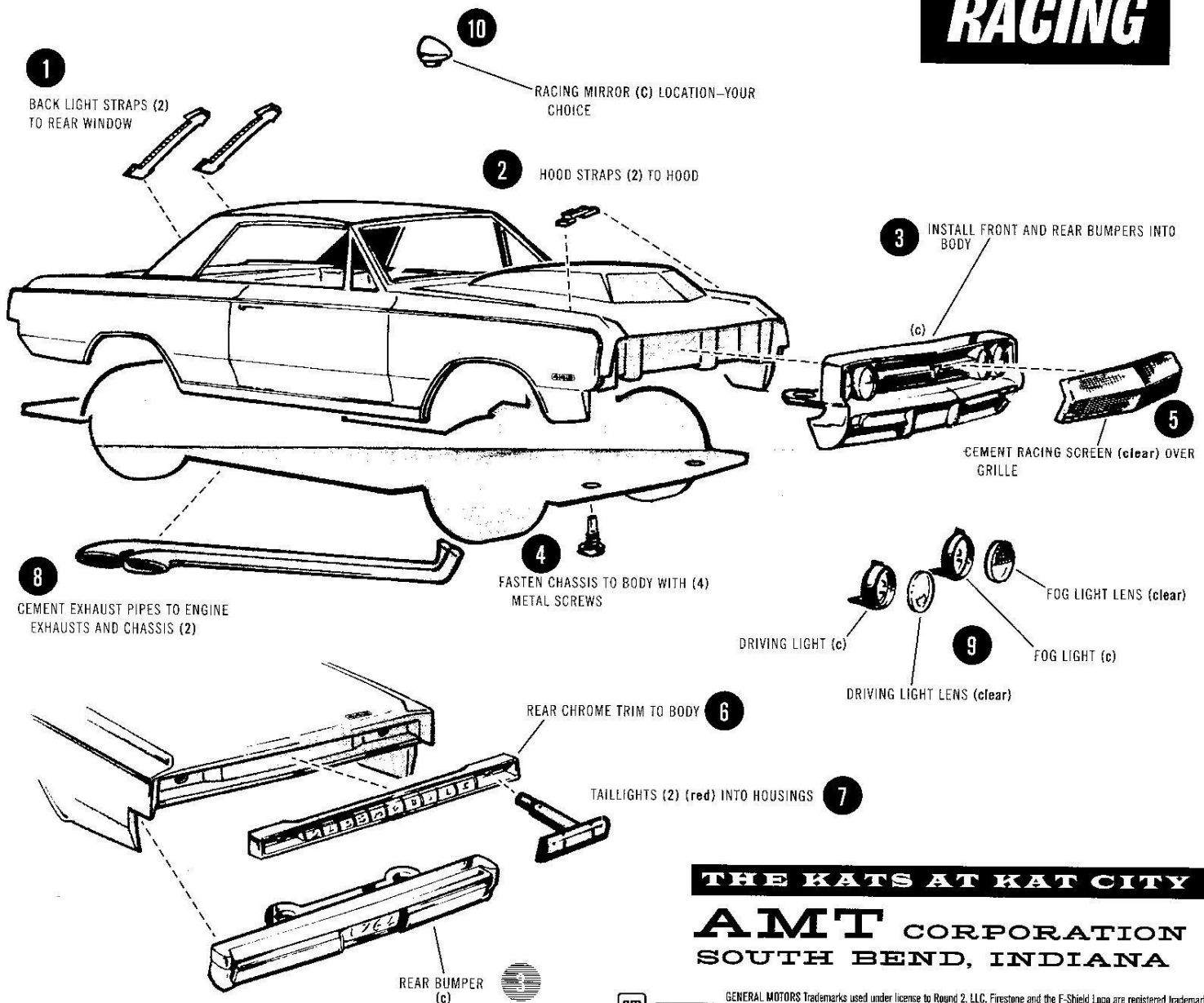
SCREEN INSERT (c) INTO PAN (license optional)

LONG BUMPERS IN FRONT

9 BUMPERS TO CAR (c) (4) LONG BUMPERS IN FRONT

10 OUTSIDE EXHAUST (2) (c) TO BODY

RACING



THE KATS AT KAT CITY

AMT CORPORATION
SOUTH BEND, INDIANA

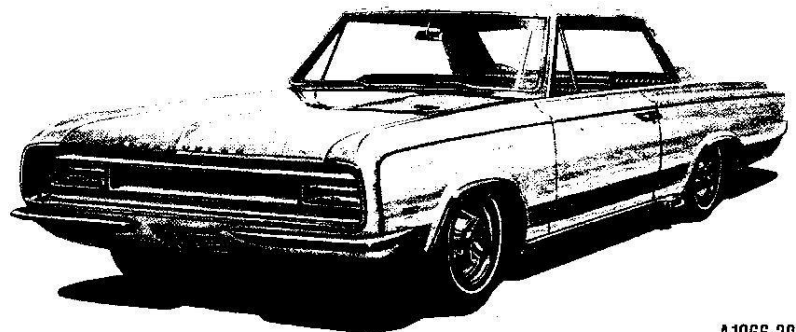


GENERAL MOTORS Trademarks used under license to Round 2, LLC. Firestone and the F-Shell Logo are registered trademarks of Bridgestone Brands, LLC and are used with permission. AMT and design is a trademark of Round 2, LLC. ©2021 Round 2, LLC, South Bend, IN 46628 USA. Product and packaging designed in the USA. Made in China. All rights reserved.

'64 **442** Cutlass hardtop

3in1 customizing kit

AUTHENTIC 1/25 SCALE MODEL



This kit may be built ONE OF THREE WAYS. Look over this instruction sheet carefully before you begin building. You may decide to combine parts from the different versions shown, or use parts from other AMT kits for a really personalized model. After you've planned your car, follow the assembly instructions WITHOUT CEMENTING the parts together. This will familiarize you with the fit and location of parts.

For the neatest job, the various sub-assemblies and components should be painted before any chrome parts are attached. For example: in building the

custom version, all non-chrome parts such as scoops, pans, skirts, etc. (except the clear window assembly) should be cemented in place and then the body should be painted as a unit for a smooth, professional-looking finish.

AMT® kits are molded from the finest high-impact styrene plastic. Use only point and cement made for styrene. Trim off any excess plastic before cementing parts together. When attaching CHROME parts, (indicated by "C" after part names) scrape plating away where cement is to be applied. Use just enough cement to join parts and be careful not to smear cement on exposed surfaces.

A1066-200

