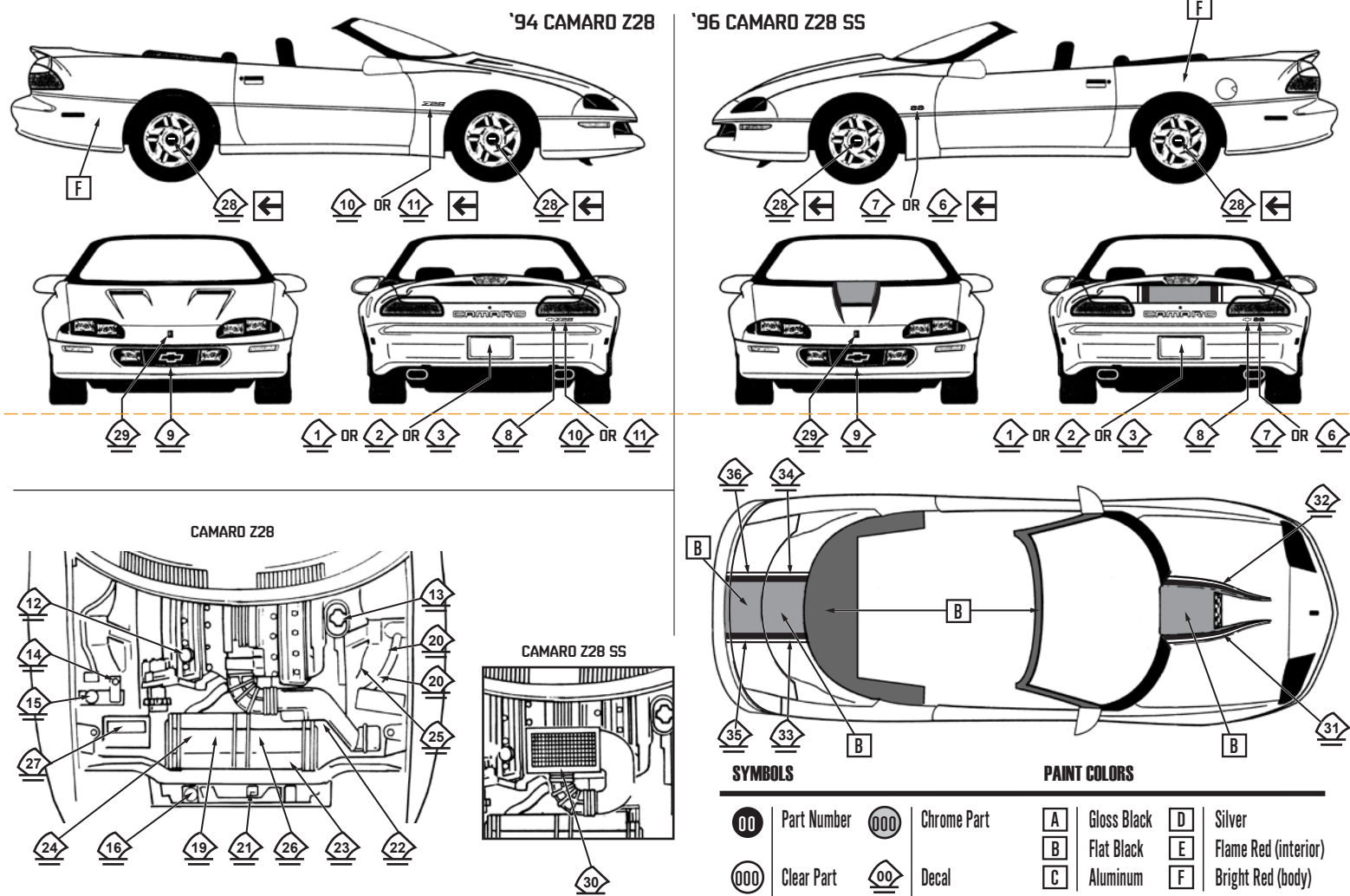


DECALS AND PAINT



amt

1994 CAMARO Z28

CONVERTIBLE

A1030-12

READ THIS BEFORE YOU BEGIN Cement all parts unless otherwise indicated.

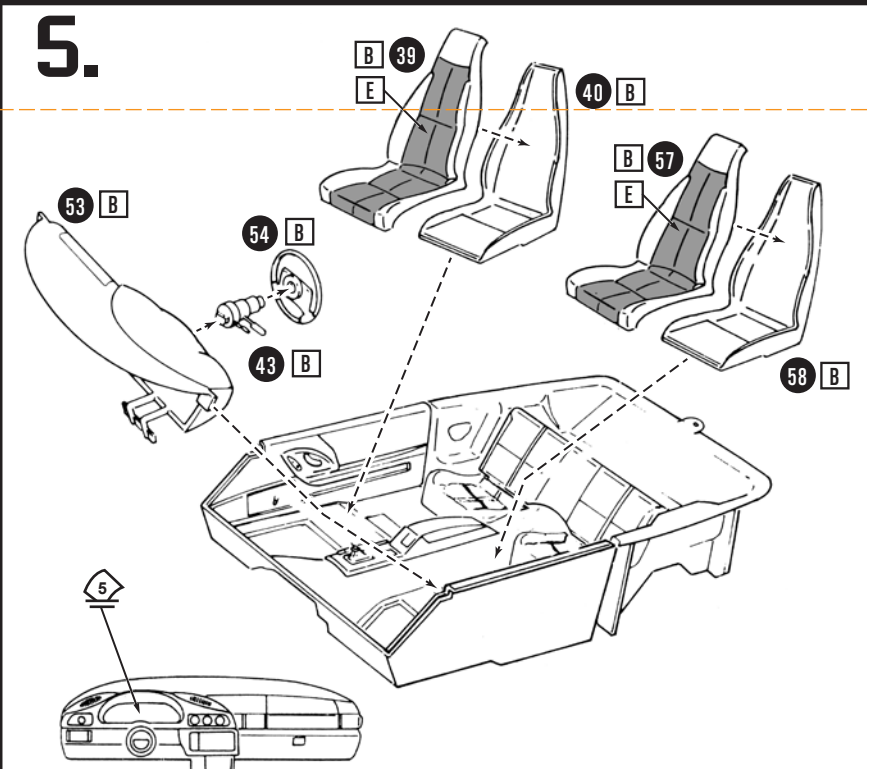
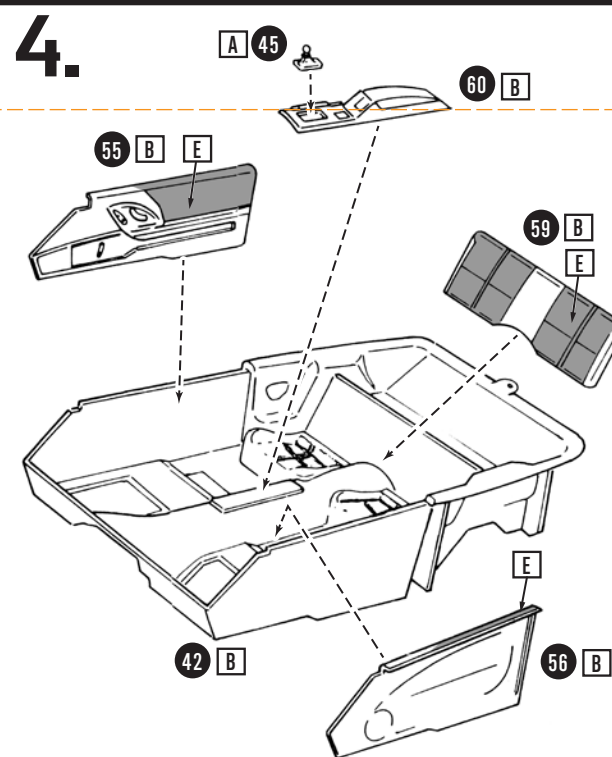
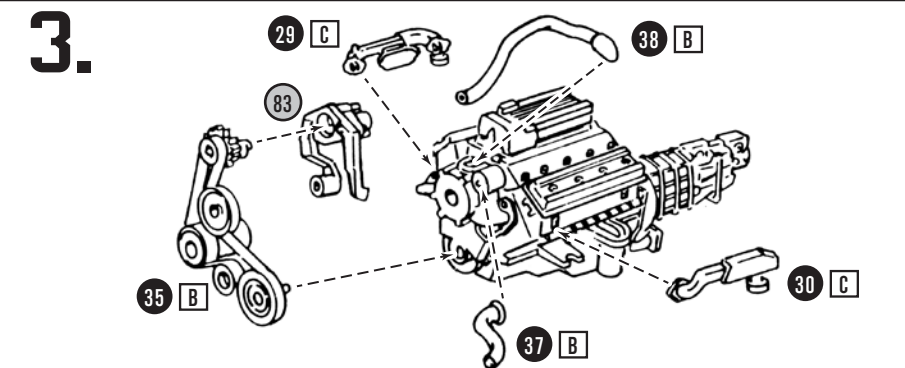
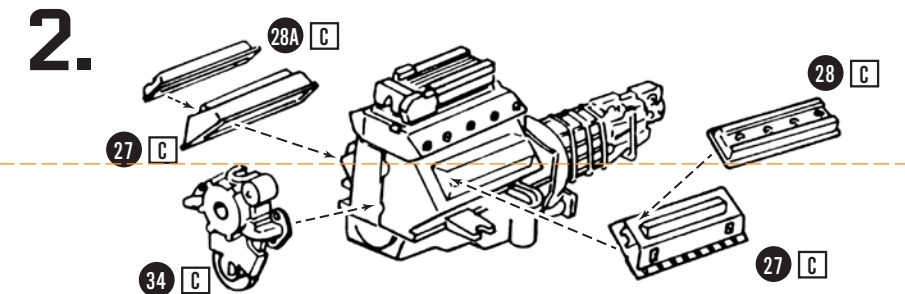
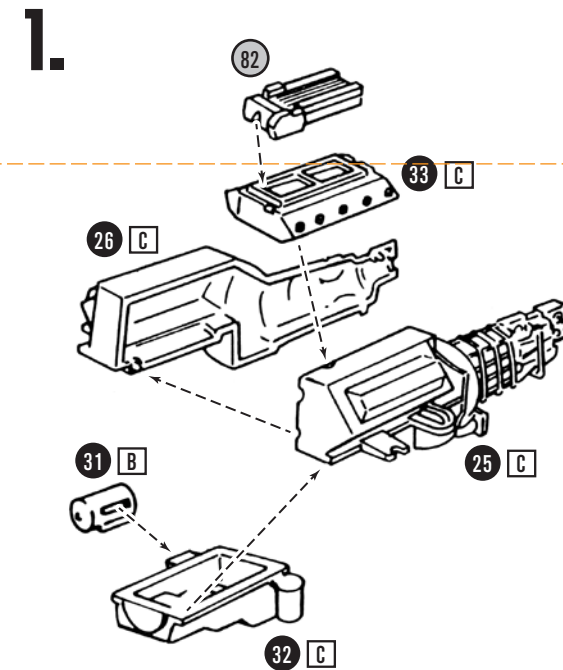
This kit may be built more than one way. Look over this instruction sheet carefully before you begin building. After you've planned your car, follow the assembly instructions and "TEST FIT" the parts without cementing. This will familiarize you with the location of parts.

For best results, the various sub-assemblies and components should be painted before any chrome parts are attached. For example: When attaching non chrome engine parts, it is best to cement them in place and paint as a unit.

AMT® kits are molded from the finest high-impact styrene plastic. Use only paint and

cement made for styrene. Trim excess plastic from parts before joining. When attaching "chrome" or painted parts, scrape plating or paint away where parts are to be joined. Cement all parts unless otherwise indicated by the instructions. Use just enough cement to join parts and be careful not to smear cement on exposed surfaces.

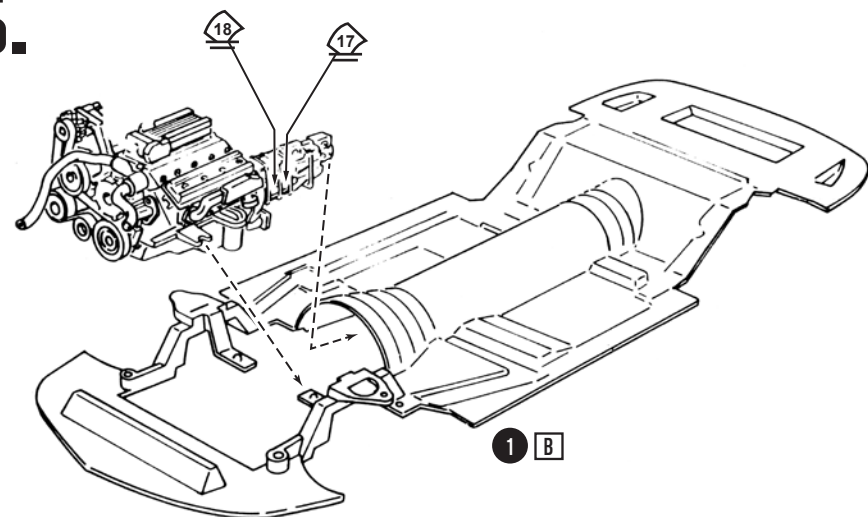
Built according to the instructions on this sheet, you should have no trouble assembling your kit. Just FOLLOW THE NUMBERS as the instructions are numbered in order of assembly. NOTE: Chrome and clear parts are indicated (see key on back page).



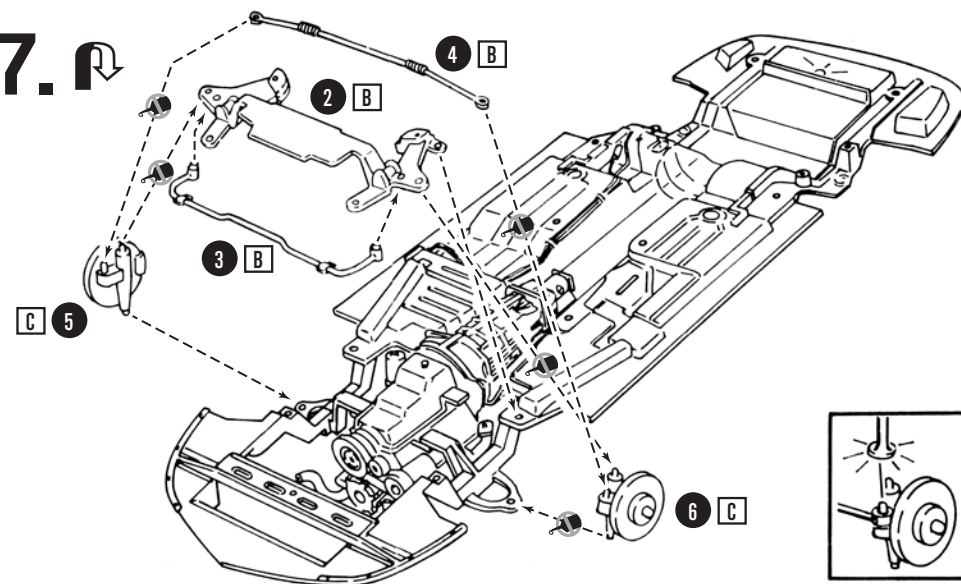
GOODYEAR
OFFICIAL LICENSED PRODUCT
99-10409-30115

GENERAL MOTORS Trademarks used under license to Round 2, LLC. Goodyear (and wing foot design) and Eagle are trademarks of The Goodyear Tire & Rubber Company, Akron, Ohio USA used under license by Round 2, LLC. AMT and design is a registered trademark of Round 2, LLC. ©2017 Round 2, LLC, South Bend, IN 46628 USA. Product and packaging designed and made in the USA. Decals made in China. All rights reserved.

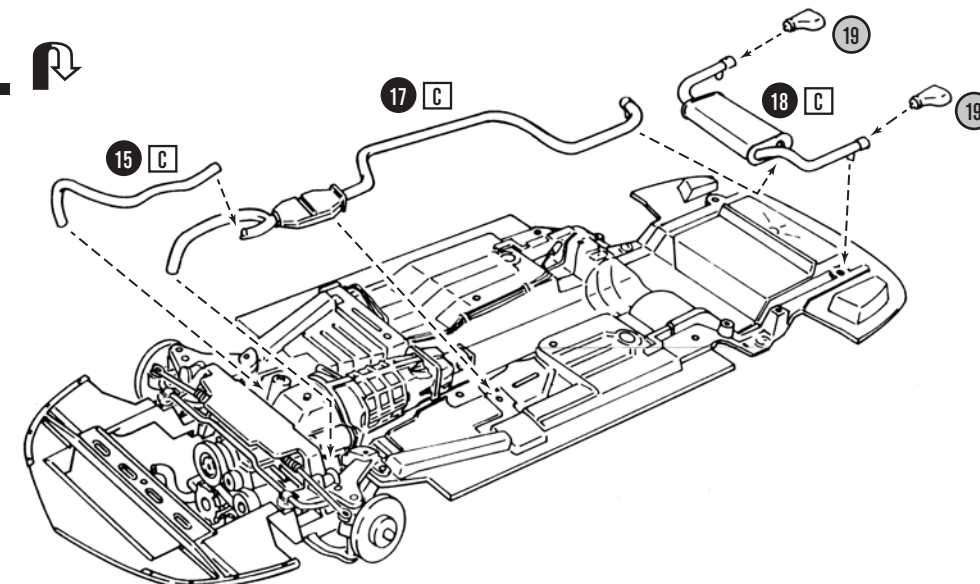
6.



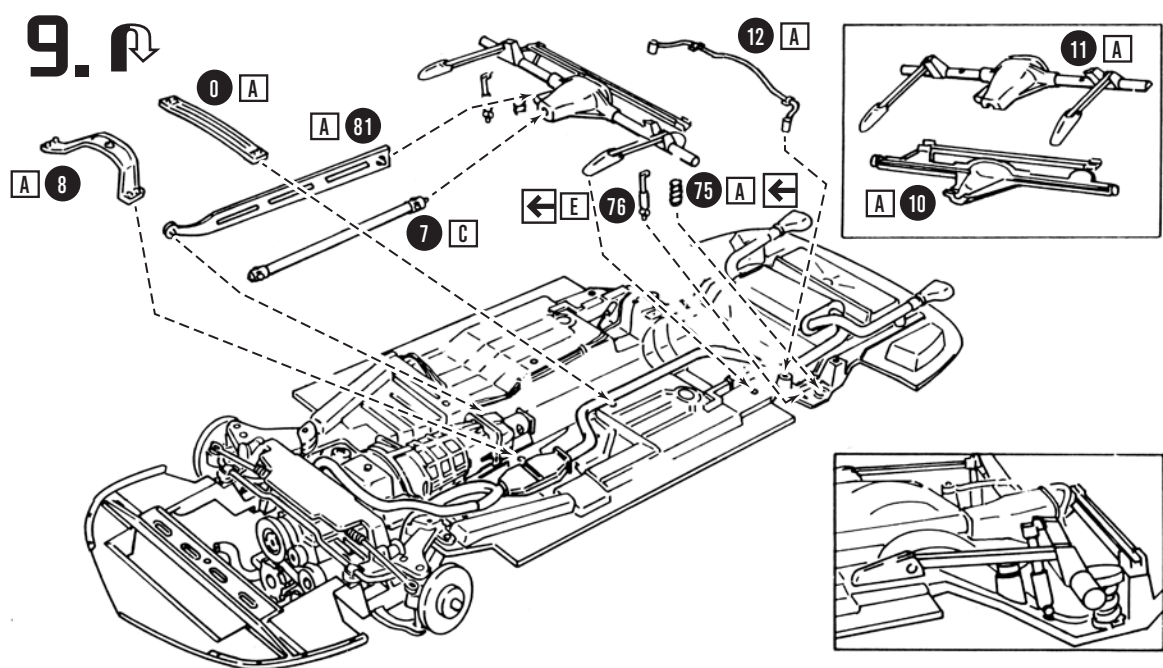
7. ↺



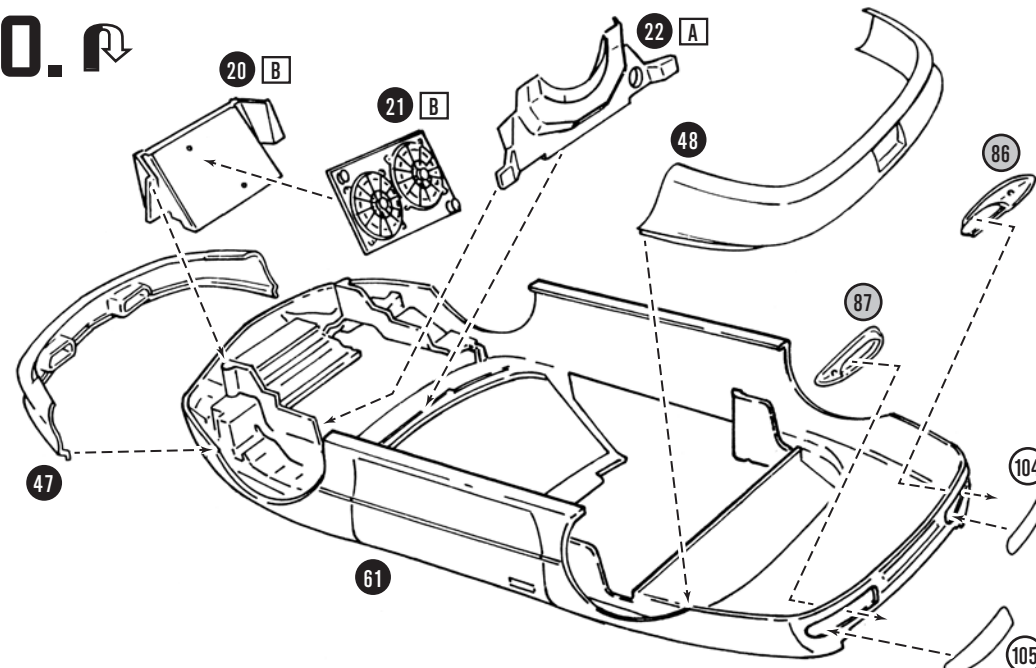
8. ↺



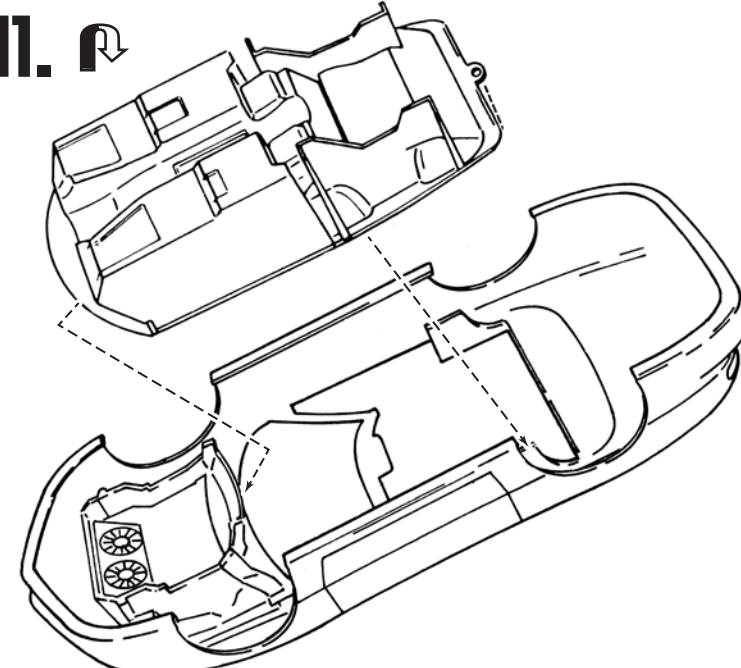
9. ↺



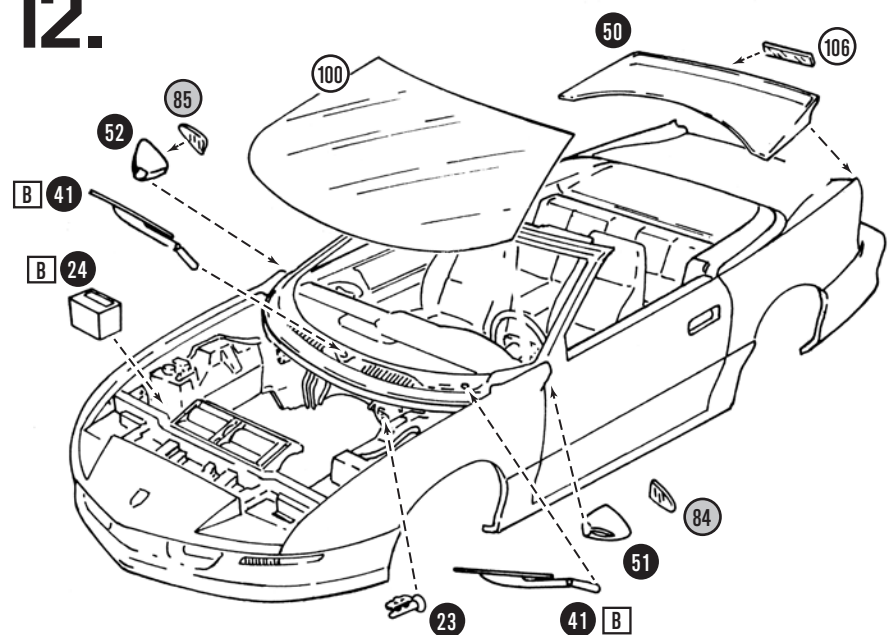
10. ↺



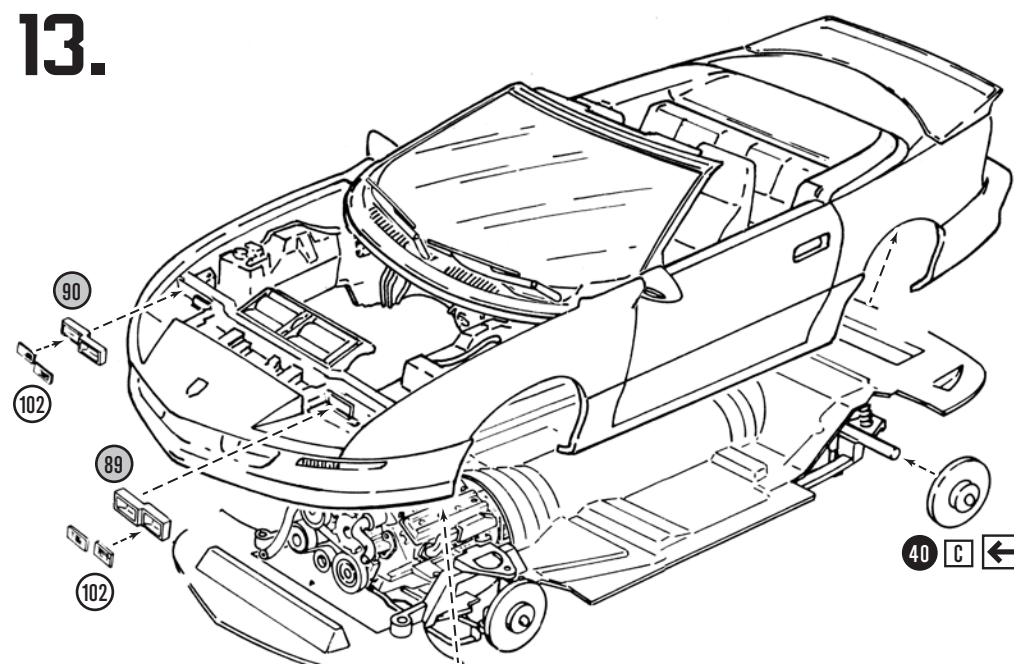
11. ↺



12.



13.



14. ↺

