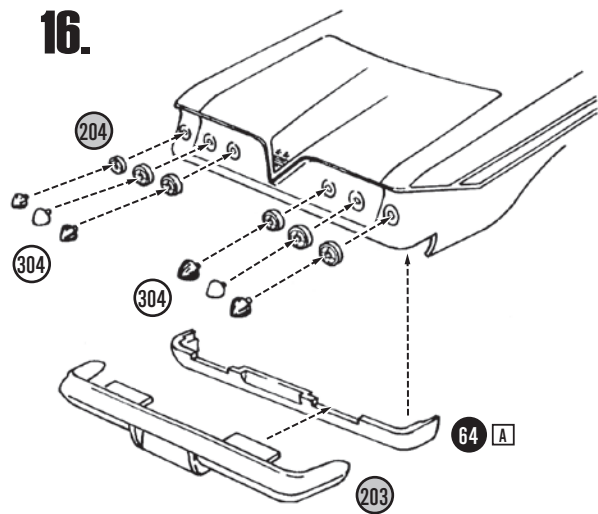
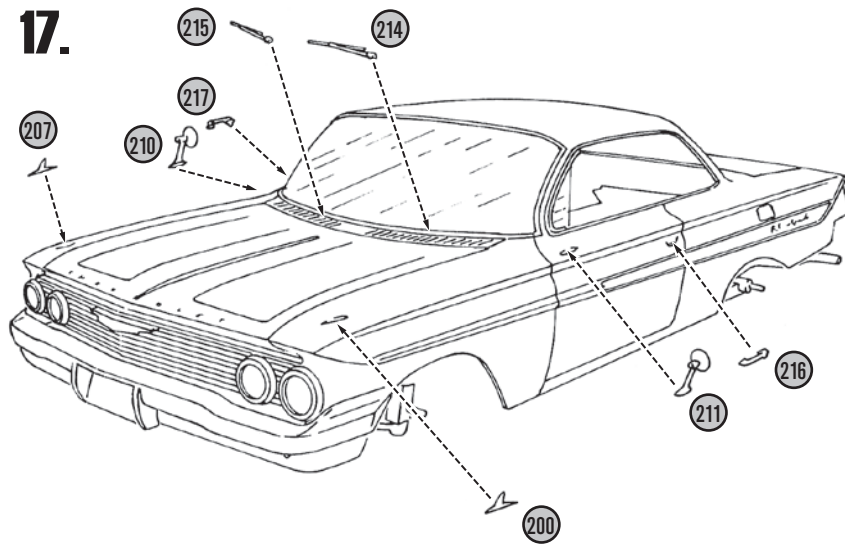


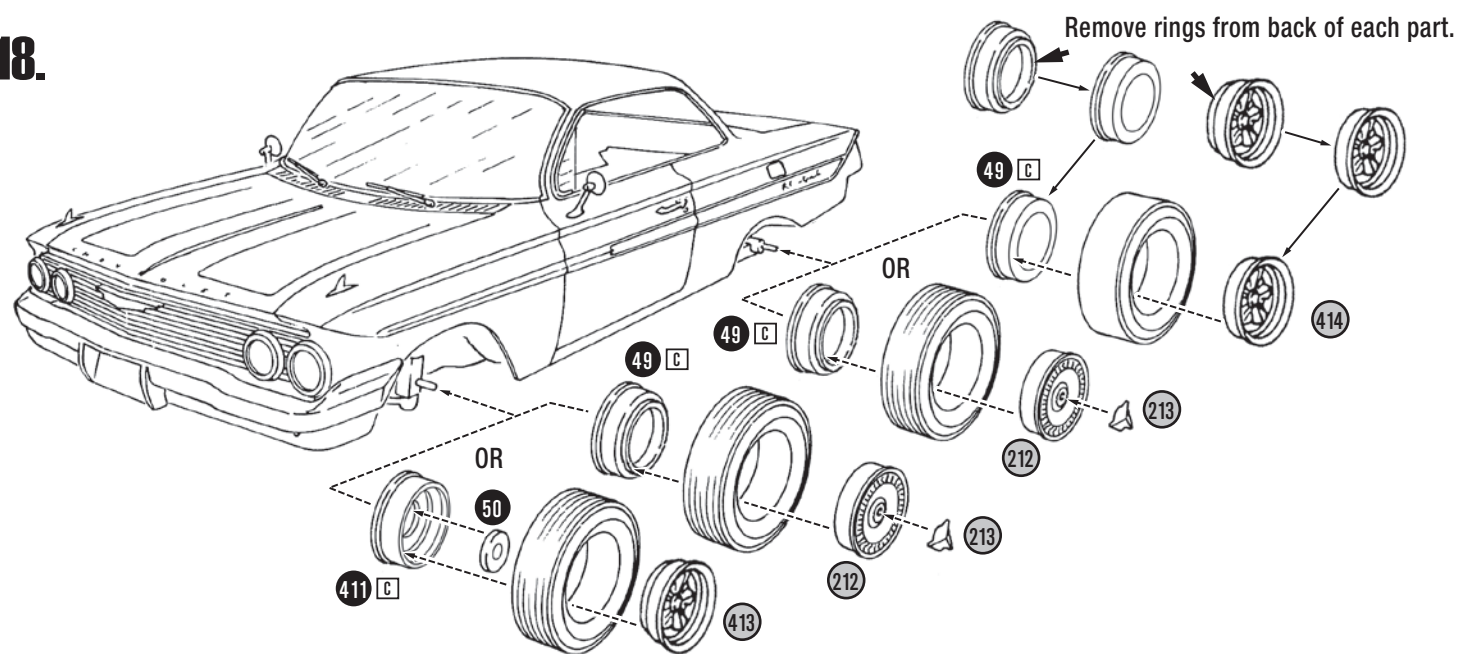
16.



17.



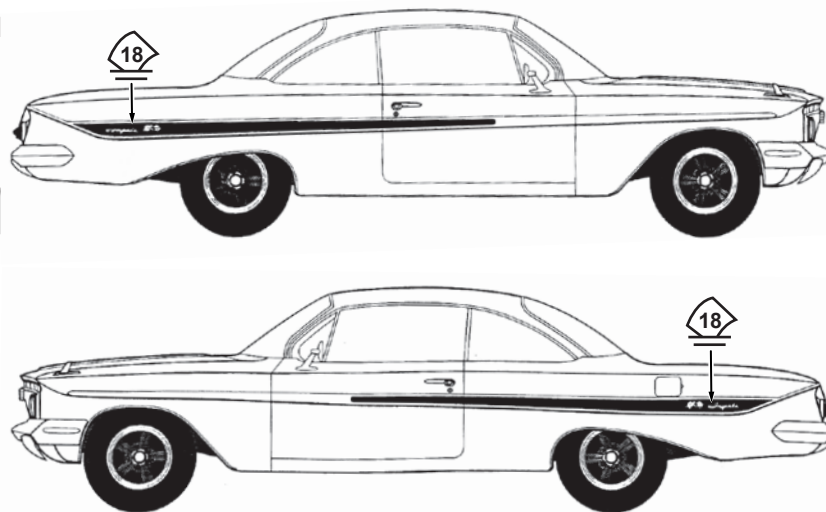
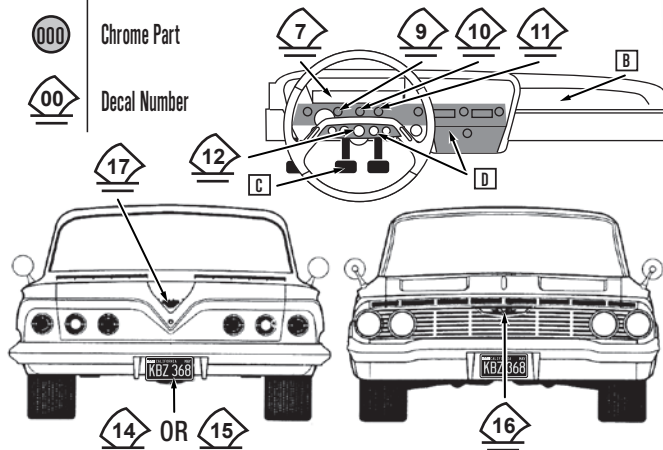
18.



SYMBOLS

PAINT COLORS

00	Part Number	A	Body color	D	Silver
000	Clear Part	B	Non-metallic body color match	E	Chevy engine red
000	Chrome Part	C	Black	F	Insignia White
00	Decal Number				



round2models.com

Round 2, LLC.
4073 Meghan Beeler Court
South Bend, IN 46628
www.round2models.com

International Hobbycraft UK Ltd
21 St. Thomas Street
Bristol BS1 6JS England



GENERAL MOTORS Trademarks used under license to Round 2, LLC. Goodyear (and wing foot design) and Eagle are trademarks of The Goodyear Tire & Rubber Company, Akron, Ohio USA used under license by Round 2, LLC. AMT is a registered trademark of Round 2, LLC. ©2016 Round 2, LLC, South Bend, IN 46628 USA. All product is designed and made in the USA, except for decals which are made in China. All rights reserved.

amt

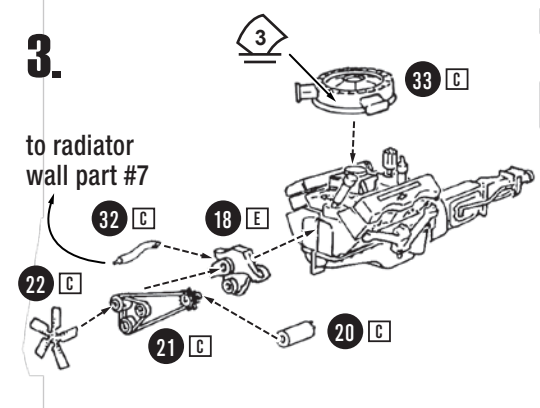
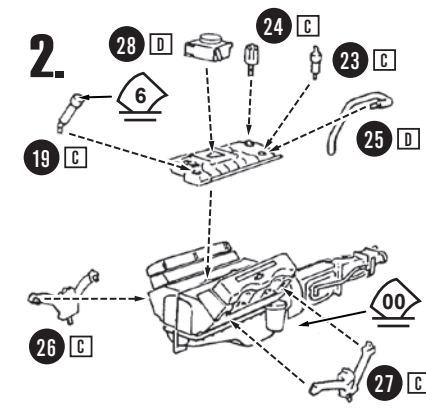
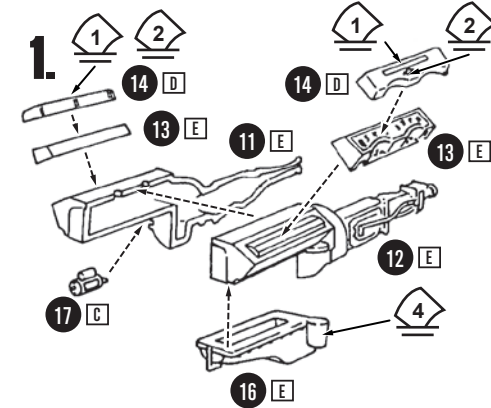
AMT1013-12

CHEVROLET[®] IMPALA[™] SS

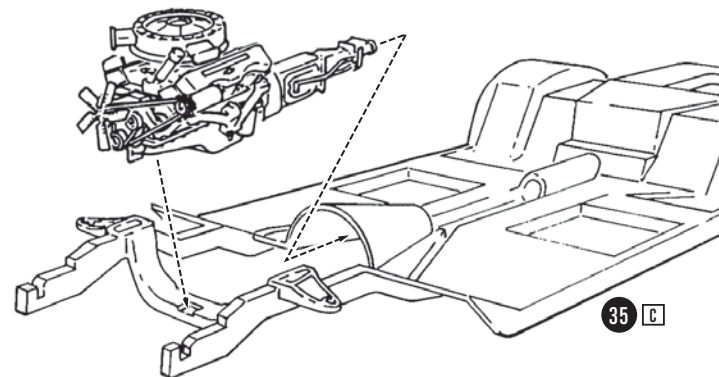


IMPORTANT! READ THESE POINTS BEFORE YOU BEGIN

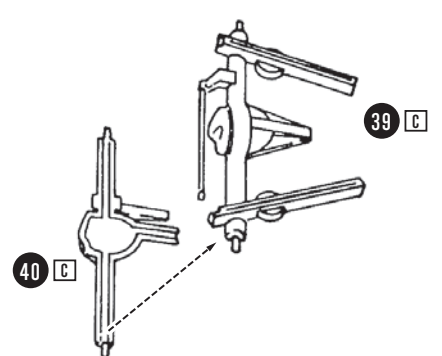
- 1 "TEST FIT" all parts before cementing. Trim excess plastic from parts before joining.
- 2 Cement all parts unless otherwise indicated by the instructions.
- 3 Use paint and cement made for styrene plastic only.
- 4 Paint all sub-assemblies before attaching chrome parts.
- 5 Scrape chrome and paint away from surfaces to be cemented together.
- 6 Follow steps starting at 1. Key to symbols and paint colors are on back page.



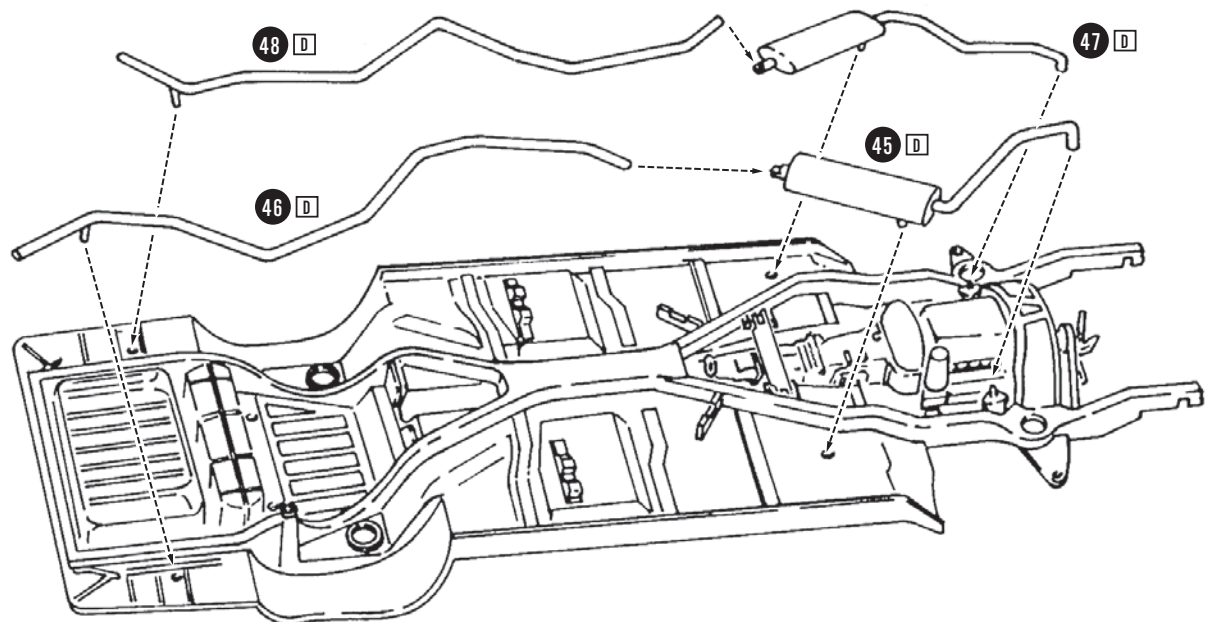
4.



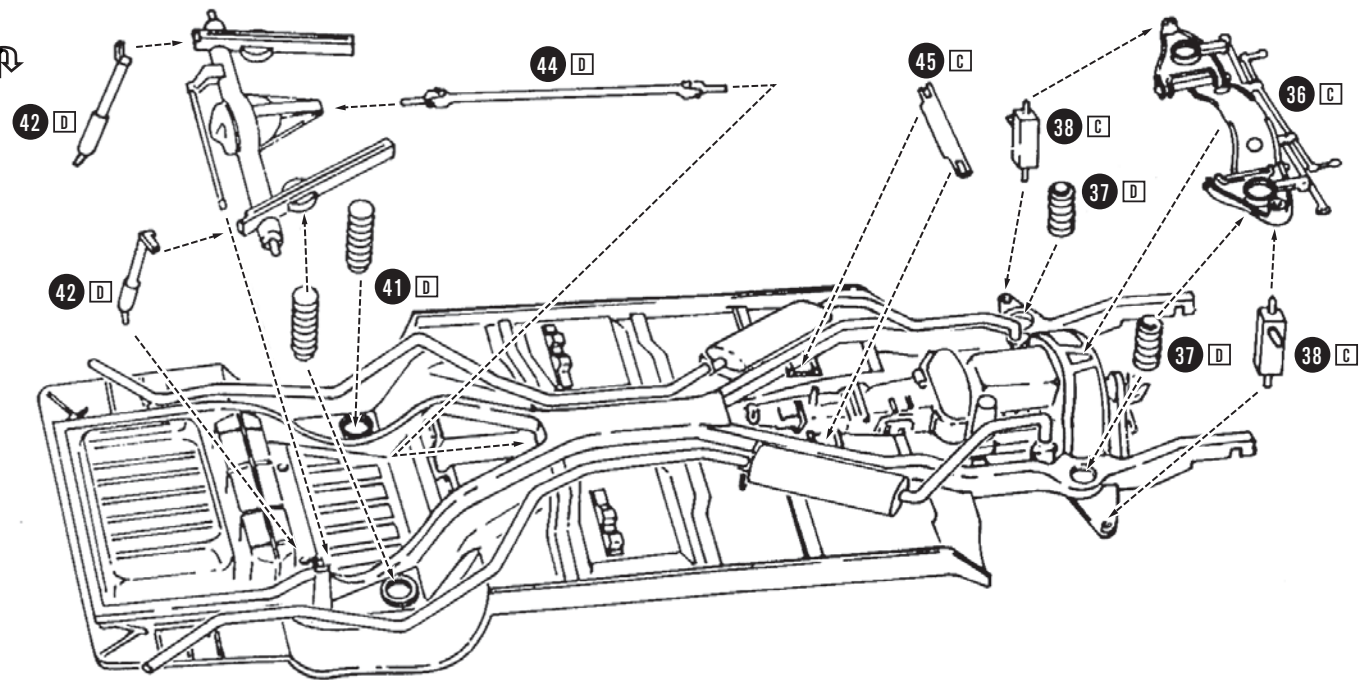
5.



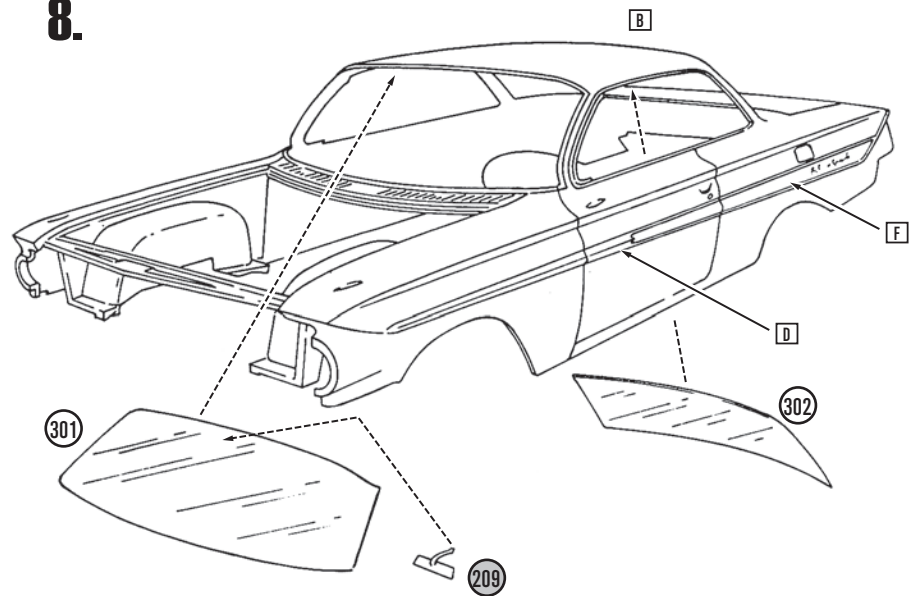
6.



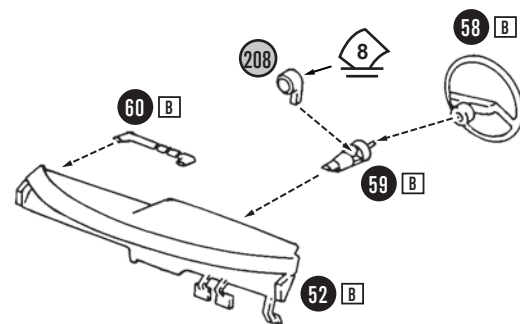
7. 



8.

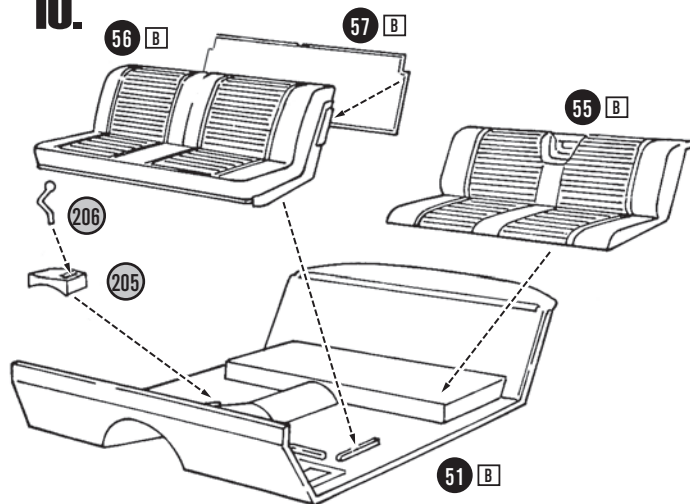


9.

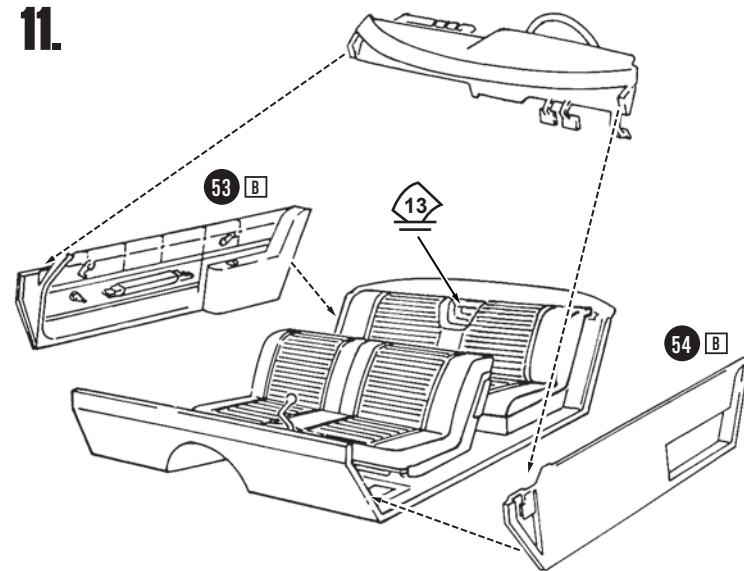


See notes on back panel for
dash color and decal placement.

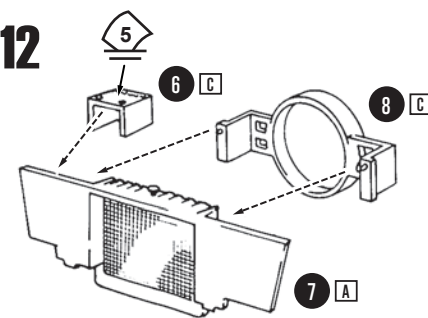
10.



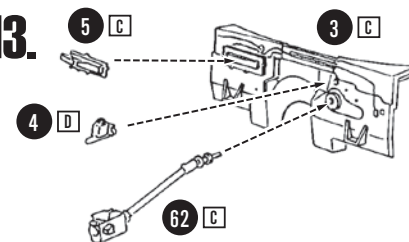
11.



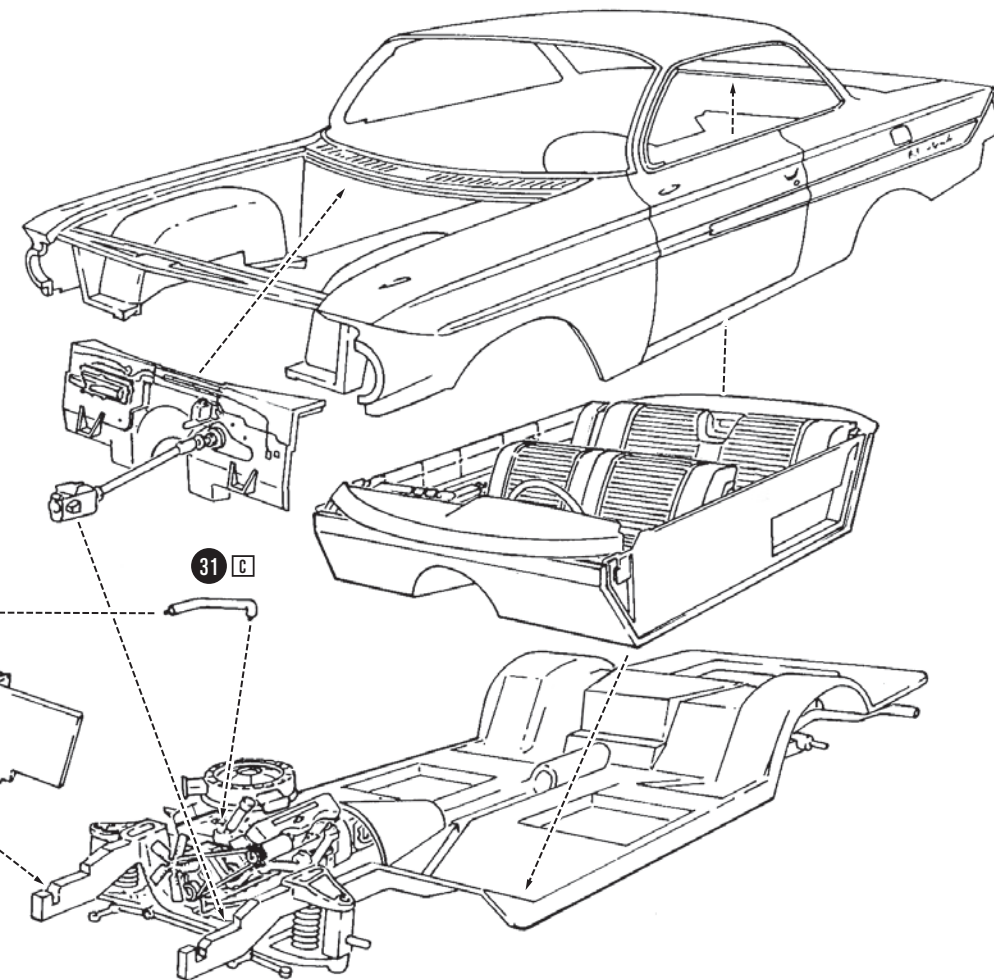
12.



13.



14.



15.

