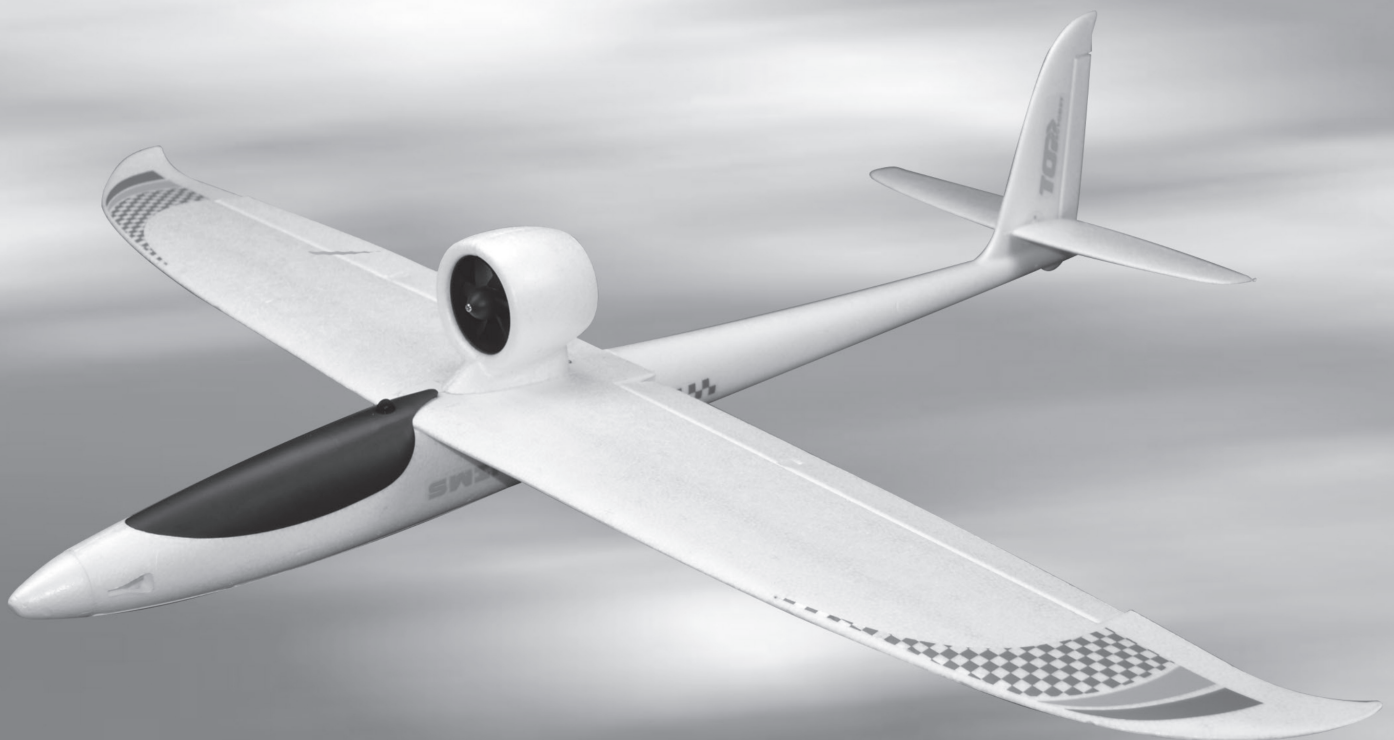


TOP[®]
R/C HOBBY

SWIFT

Radio Control Model Airplane

Operation manual



CONTENTS

Brief introduction	1
Main specifications	1
Basic configurations	1
Products constitution	1
Assemble processes	2
Confirmation of CG Locatio.....	4
Valuable experiences	4
Charging methods and cautions	5
Safety Instruction of Li-Po/Ni-MH battery.....	6
Notifications for ESC	7
Spare parts	8

Statement

- 1.Please read this manual carefully and follow the instruction of the manual before you use this products;
- 2.Our airplane is not a toy,which is only suitable for the experienced manipulator or under the guidance of the experienced pilot.
- 3.Not recommended for the children under 14 years old.
- 4.Please adjust this plane according to the instruction and make sure that the finger and other parts of your body be out of the rotating parts of the plane,or it may cause damage to the plane or injury to your body.
- 5.Do not fly in the thunderstorm,strong wind or bad weather.
- 6.Never fly the plane where there are power linesoverhead,automobiles,near aerodrome,railwayor highway.
- 7.Never fly our plane where are crowds of people.Give yourself plenty of room flying,as the plane can fly at a high speed.Remember that you are responsible for others safety.
- 8.Do not attempt to catch the plane when you are flying it.
- 9.The user should bear full responsibility of proper operation and usage with regards to this model.We,Top RC together with any distributor of us will not be responsible for any liability or loss due to improper operation.

Brief introduction

Thank you for purchasing the "Swift" remote control model airplanes from Top RC, and we hope this plane will bring you endless joy to you after you choose it.

- ★"Swift", the whole plane adopts EPO foam body, light weight, high structural strength.
- ★Smooth appearance, good flight performance
- ★This aircraft selected excellent airfoil, reasonable wing load distribution, flight stability and easy to control
- ★The plane using of push-back ducted fan layout, with elegant appearance, powerful and high-speed performance.

Main specifications

- ★Wingspan 1200MM
- ★Length 1016MM
- ★Flying Weight 950g
- ★Flying time ≥5 minutes

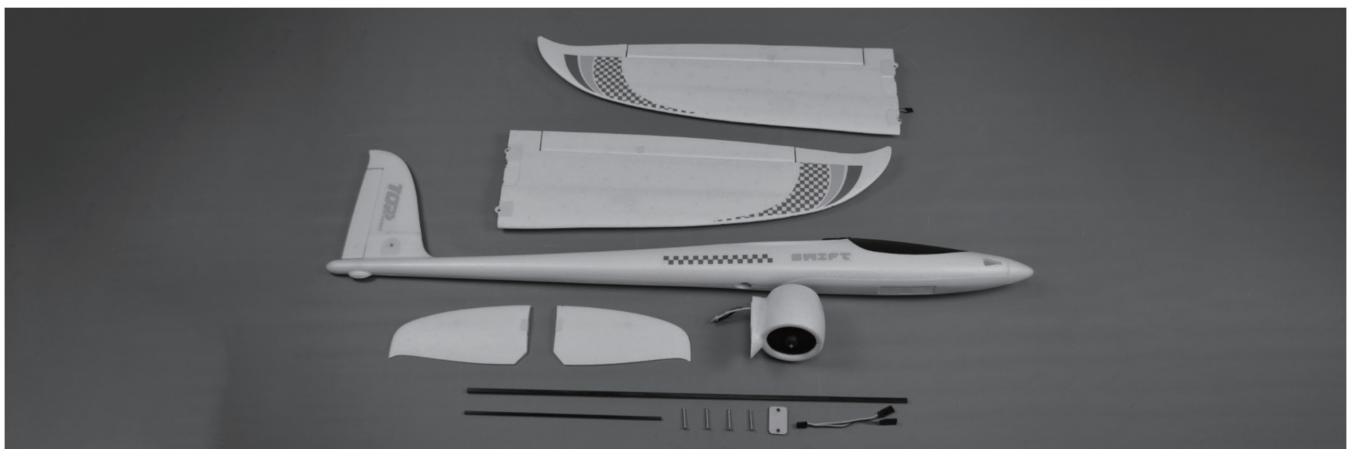
Basic configurations

- ★Radio system 4CH
- ★Motor TOP2839-3300KV
- ★Battery 2200~3300mAh 14.8V 25C
- ★ESC 60A
- ★Servo 4pcs*9g metal digital servo

Product Constitution

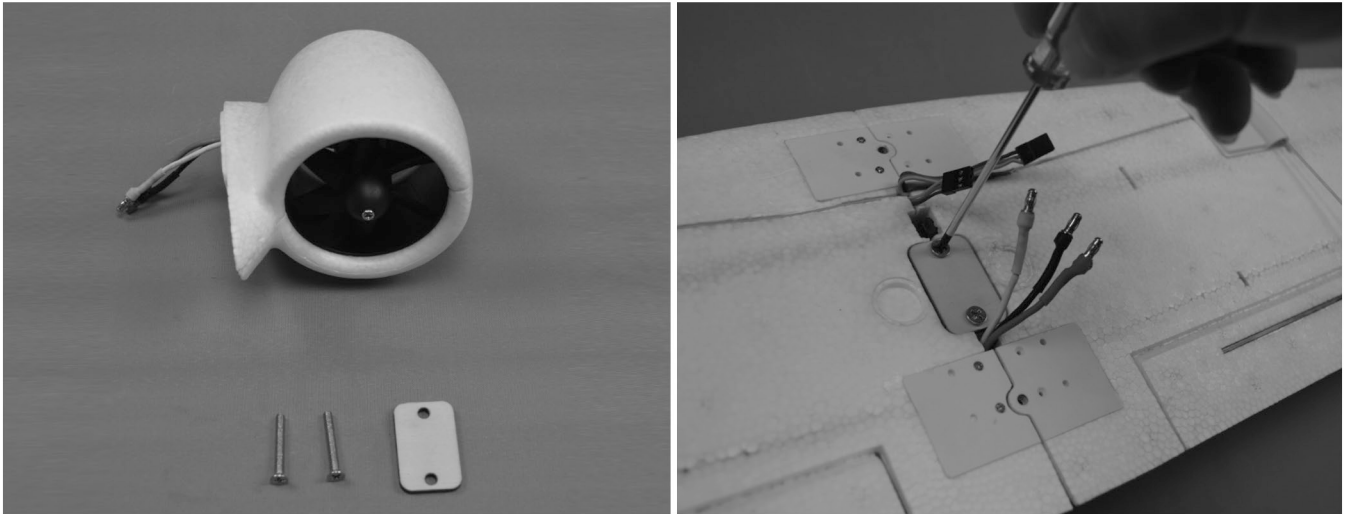
PNP version

Fuselage, Left & Right Wing, Horizontal Wings, Connecting rods, EDF power system, accessory bag



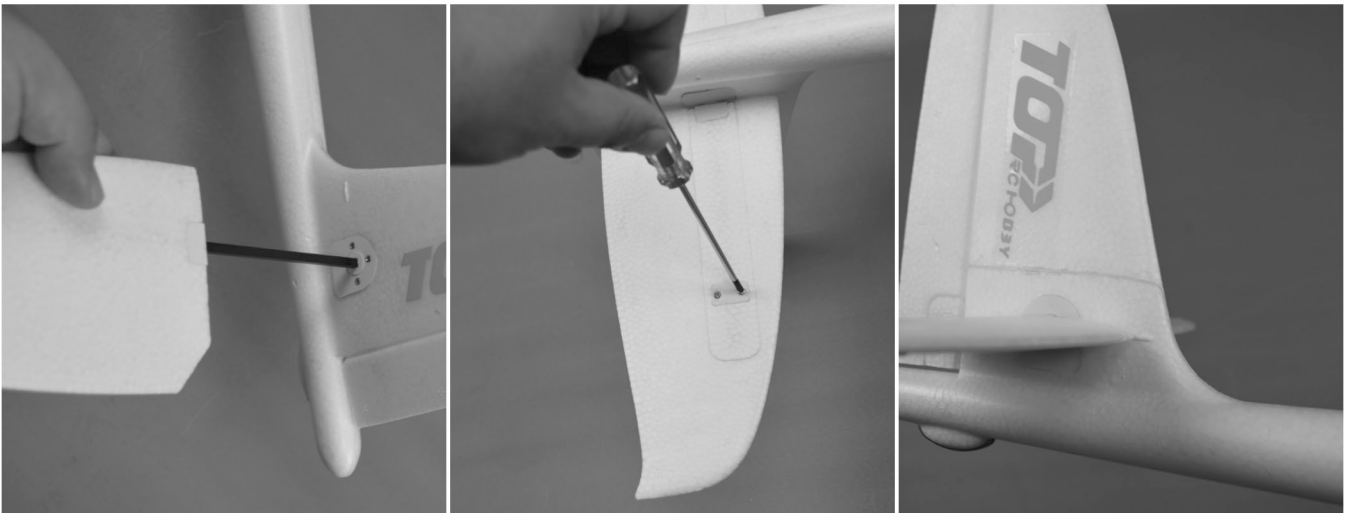
1. Assembly of the Main Wings

Take of the Main wings & Longer Connection rod and EDF power system from the package. Connecting the Right and Left wing by inserting the longer connecting rod .Then please install the EDF power system to the fuselage and locked it by the 2pcs 4*25mm screws.(The fan is facing the head).Please make sure there is no gap or shaking.



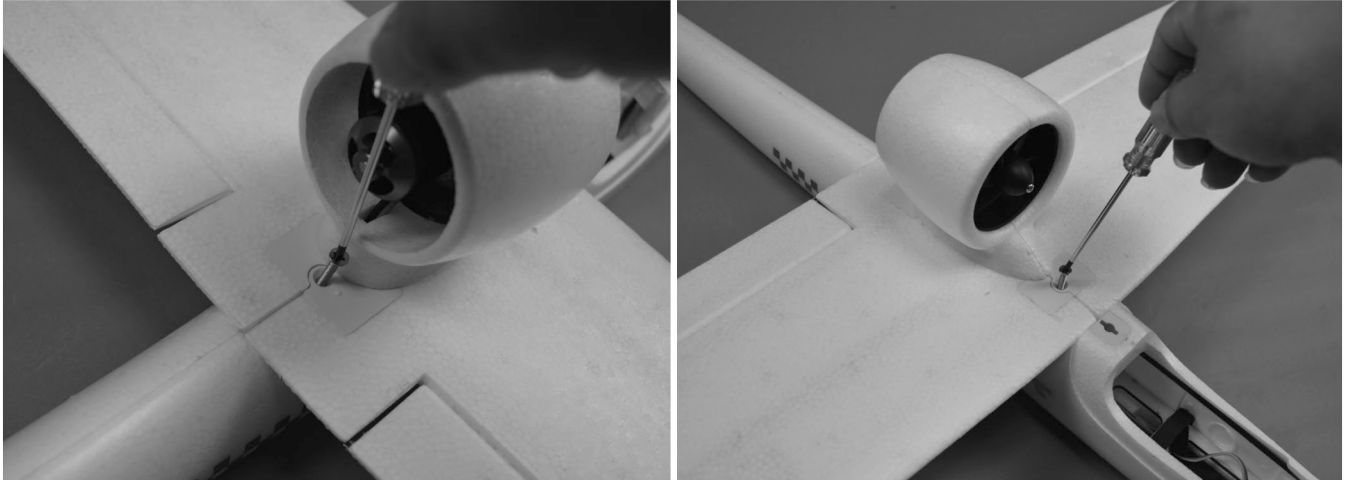
2. Assembly of the Horizontal Wings

Take of the horizontal wings and the shorter connection rod from the package. Insert the connecting rod to the corresponding groove at the tail of the fuselage. Then install the horizontal wings to the fuselage and lock them by screws under the horizon wing (Please note that the center of assembled horizontal wing should match the bulge mark at the vertical wing) .



3.Assembly of the main wings

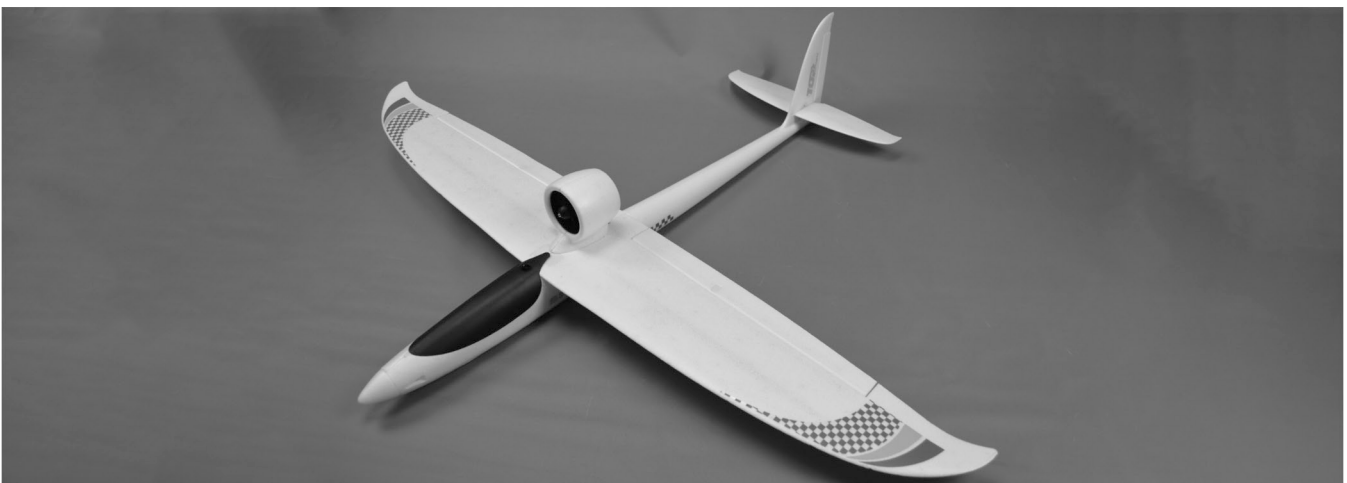
Install the assembled main wings to the fuselage and lock them by the other 2pcs 4*25mm screws. Please use Y wire to connect the aileron servo with receiver and connect the ESC with motor correctly.



4.Install the battery, then close the canopy and lock it.

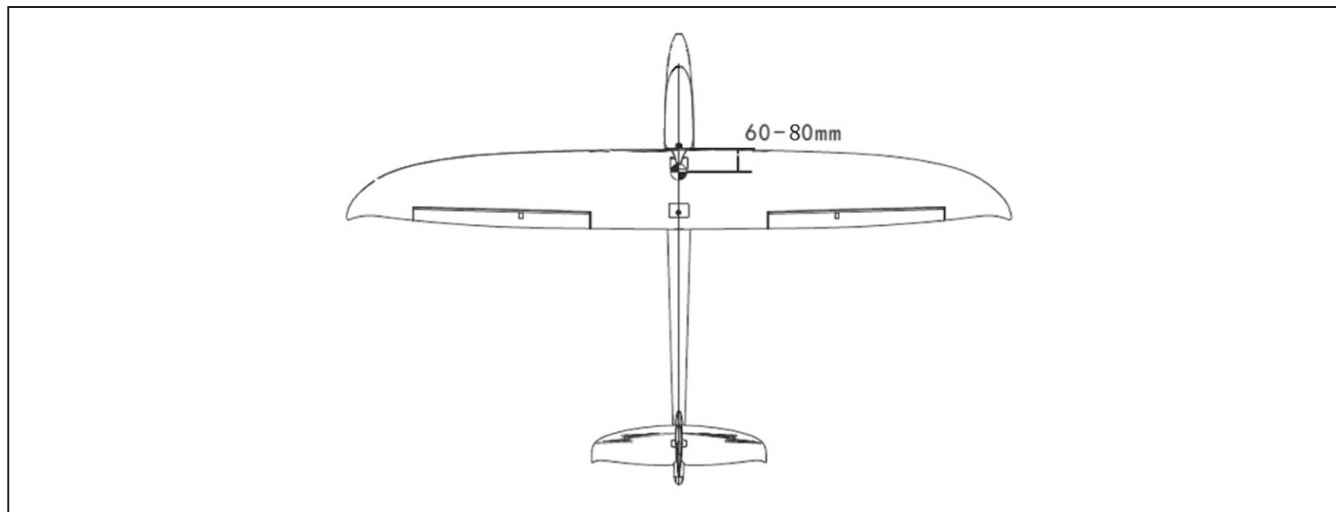


5.Finished the assembly of "Swift".



Confirmation of CG Location

Check the center of gravity and make sure the CG of this plane should be within the range 60-80mm away from the leading edge of the main wings as indicated in the picture.



Valuable experiences

1. If you have the simulator, we suggest that you can practice your skill by the simulator before you fly this model, which will bring some help for you.
2. Please climb the plane above the 50 meters with half throttle to fly it when you fly it for your first time, then you will be familiar with the performance of this plane.
3. You should learn how to control this model blandly, it will reduce the possibility of crash and prolong the usage life of the plane.
4. The turn radius should not be too little, or it will stall and it will increase the possibility of crash.
5. When taking off or landing the plane, you should against the wind.
6. Do not fly the model over your head or behind you, you should fly the model in front of you.

Charging methods and cautions

Li-Po battery (balance charger) specifications

Specifications:

Input voltage: DC 10V~15V

Output voltage: 2S-4S Li-Po battery

Charging current: 1.0A

Indicator state:

Green: Charge complete & no battery

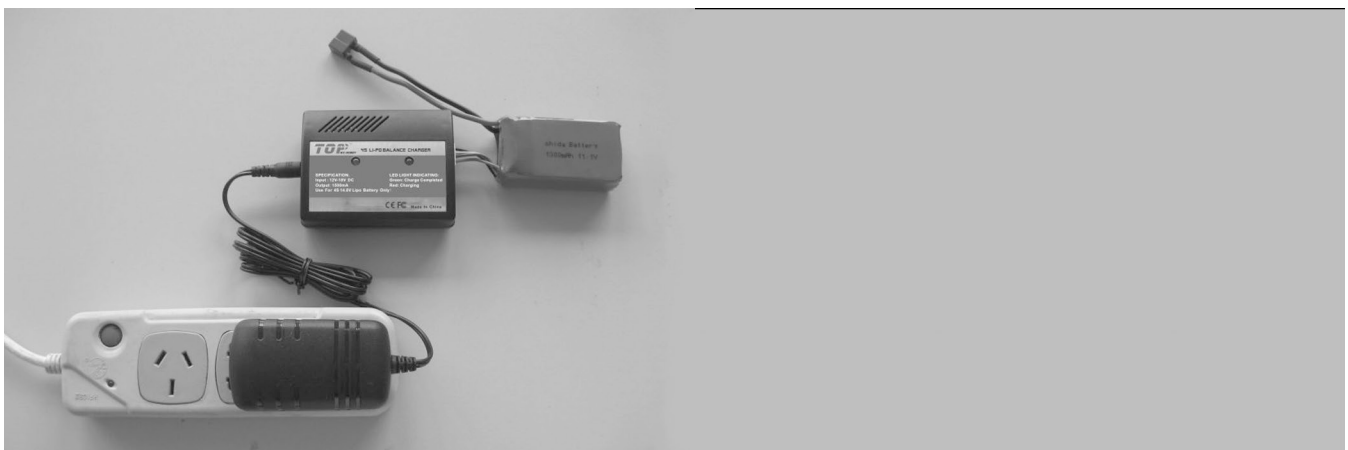
Red: Charging

The batteries are inspected separately. When the voltage reaches 4.20V, the charging process stops.



Operation

1. Then plug cigarette into its socket in car (Adapter should be connected if charge at home: connect the adapter to home power socket, then plug the adapter' DC end to charger). The LED will turn green indicating it is ready for charging.
2. Connect the battery to charger per its interface mark. The LED becomes red, which means charging is on the way.
3. When LED flashing, the charger will enter the stage of drip current charging. The LED turns green when fully charged, and the battery will be used at any time.



Notice

1. While charging is in process, please do not make it near flammable materials.
2. Expect Li poly battery, this charger is not allowed for other kinds of battery.
3. While charging, please keep it out of the reach of Children.
4. When this charger is in use, please do not go away and leave it unwatched, if any abnormality occurs(Such as the power indicator is off, the temperature of the battery rise rapidly, etc.) stop charging immediately.
5. Please do not use power with output voltage higher than 15V.
6. Please do not disassemble the charger or its accessories.
7. When the battery is not cool down, please do not urge to charge it.

Notice

1. Be fully charged under no more than 1 A voltage by using the specified charger.
2. Be discharged under 10C voltage but avoiding discharge time too long to harm the battery.
3. Repeat the first and second step one or two times.
4. When the Li-poly battery was stored more than 3 months, it needs to be recharged to maintain its voltage, and ensure its life time.

Safety Instruction of Li-Po/Ni-MH battery

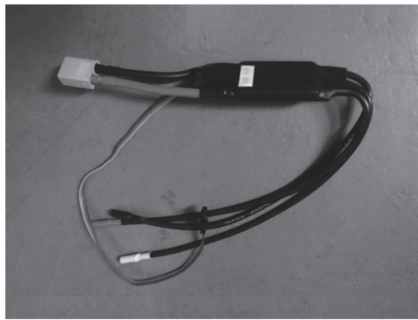
01. Do not disassemble or reconstruct the battery.
02. Do not short-circuit the battery.
03. Do not use or leave the battery nearby the fire, stove or heated place (more than 80°C).
04. Do not immerse the battery in water or sea water, do not get it wet.
05. Do not charge the battery under the blazing sunlight.
06. Do not drive a nail into the battery, strike it by hammer or tread it.
07. Do not impact or toss the battery.
08. Do not use the battery with conspicuous damage or deformation.
09. Do not charge a warm battery. Allow it to cool completely before attempting to charge.
10. Do not reverse charge or over discharge the battery.
11. Do not connect the battery to the ordinary charger socket or car cigarette jack.

12. Do not use the battery for unspecified equipment.
13. Do not touch the leaking battery directly, please wash your skin or clothes with water if they are bedewed by liquid leaking from the battery.
14. Do not mix the Li-Poly battery with other un-chargeable battery in using.
15. Do not continue charging the battery over the prescribed time.
16. Do not put the battery into the microwave oven or high-pressure container.
17. Do not use the abnormal battery.
18. Do not use or keep the battery under the sunlight.
19. Do not use the battery nearby the place where generates static electricity (over 64V).
20. Do not charge the battery when the environmental temperature is under 0°C or over 45°C.
21. If you find the battery leaking, smelling or abnormal, stop using it and return it to the seller.
22. When the battery is charging, please do not make it near the flammable materials!
23. Keep the battery away from the children.
24. Use the specified charger and observe charging requirement (under 1A).
25. When using by minors, parents should show them to the correct instruction.

Notifications for ESC

1. The function of this ESC was in the best condition after factory setting; please do not change it by yourself.
2. Before connecting the battery, please make sure the throttle and trim were in the lowest position. If the throttle and trim were not in the lowest position by mistake after connecting the battery, you can cut off the battery; move the throttle and push to the lowest position, then connect the battery.
3. The ESC of the airplane was in a good cooling position after factory assembly; please do not move its position.
4. The ESC should be connected to the brushless motor correctly; otherwise the motor will be reversed turning, and the model airplane cannot fly correctly.

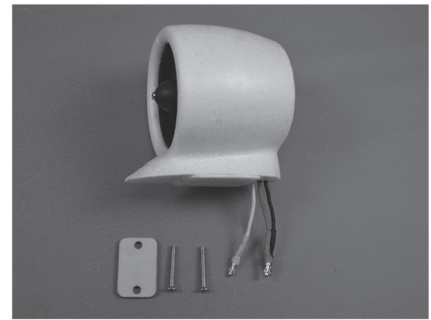
Spare parts



NO: top04201
60A brushless ESC



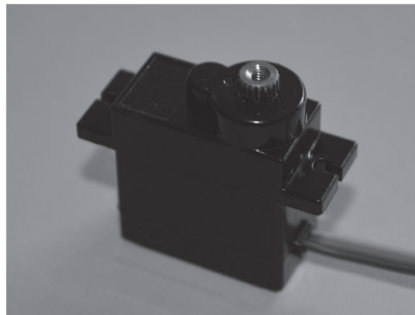
NO: top04203
Motor Set



NO: top04204
EDF set without motor



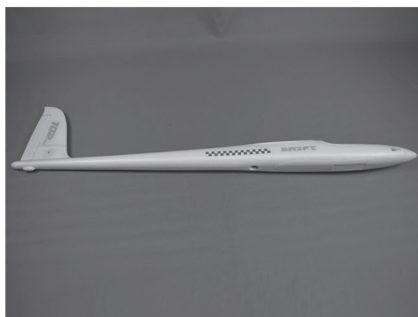
NO: top04202
EDF Power System Set
(Motor included)



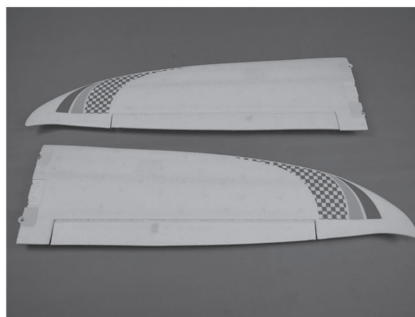
NO: top04205
9g Metal Servo(150MM)



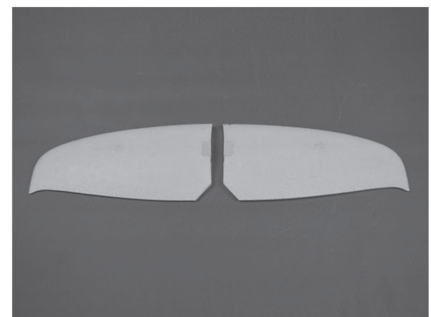
NO: top04206
Screw bag



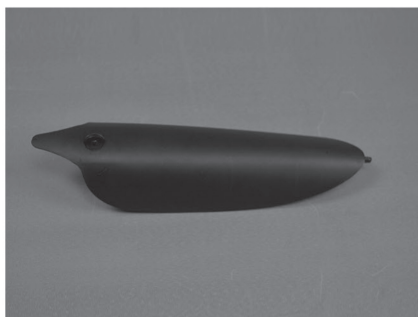
NO: top04207
Fuselage Set



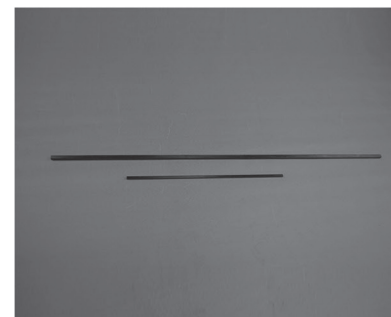
NO: top04208
Main wings Set



NO: top04209
Horizontal wings



NO: top04210
Canopy Set



NO: top04211
Connecting Rods

SWIFT

Radio Control Model Airplane

TOPTM
R/C HOBBY

Shenzhen Top RC Hobby Tech Co., Ltd

www.toprchobby.com

Tel:0086-(0)755-27908315

Fax:0086-(0)755-27908325



MADE IN CHINA