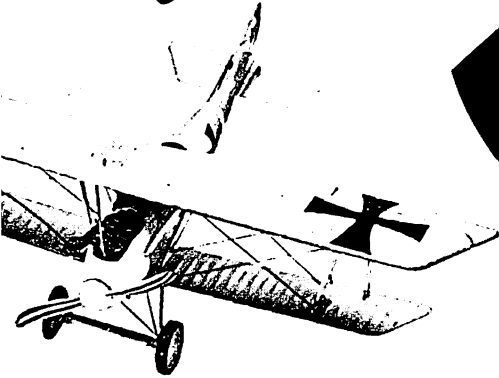
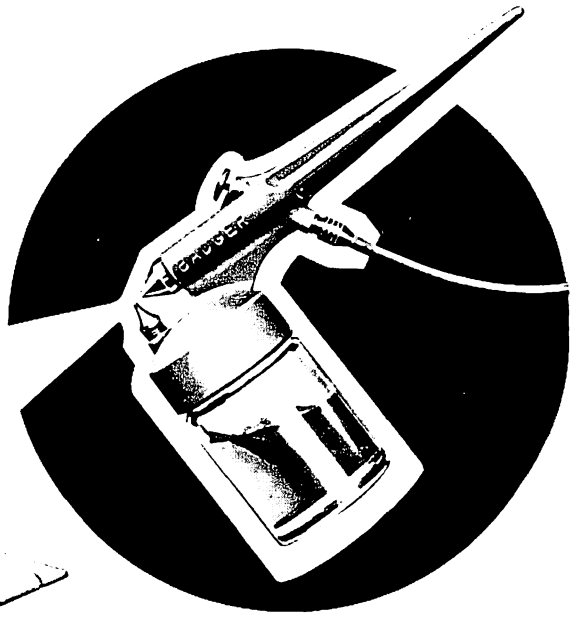


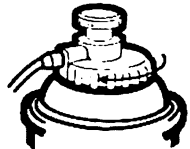
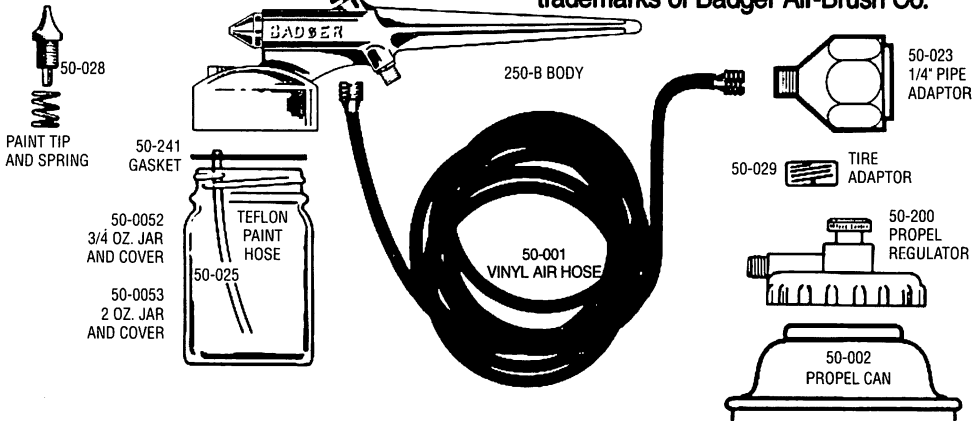
**BADGER**

250™ *basic*  
**SPRAY  
GUN**



**INSTRUCTION BOOK**

This airbrush, body and design are registered trademarks of Badger Air-Brush Co.



**TO ATTACH**

1. Attach air-regulator to air-hose.
2. Attach air-regulator to propel can.
3. Attach other end of air-hose to airbrush by turning in a clockwise motion on to fitting.

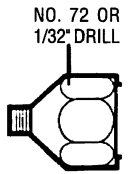


**TO TURN ON AIR**

1. Turn knob clockwise to desired pressure.
2. For less pressure or to turn off, turn knob in counterclockwise direction.

**MANUFACTURERS NOTES**

For larger jobs and prolonged spraying, a compressor or CO<sub>2</sub> tank is recommended. A 1/4" pipe thread fitting is needed (sold separately) to adapt air-hose to air-supply. When using a non tank mounted diaphragm compressor, a small bleeder hole must be drilled in adaptor to prevent back pressure. Drill hole on flat surface just behind the taper, using a number 72 or 1/32" drill. If you should change to a tank mounted compressor, the hole on the adaptor must be sealed, masking or duct tape (not included) may be used or a small drop of solder.

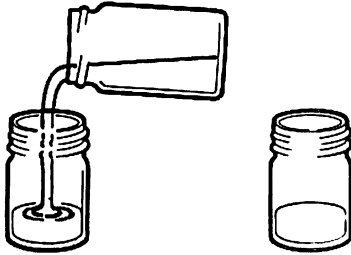


1/4" PIPE  
ADAPTOR

**THIS NOTE DOES NOT APPLY TO BADGER AIR COMPRESSORS AS NO BLEEDER HOLE IS REQUIRED**

The air-regulator valve is designed for propellant cans. It will adjust pressure from 15 to 50 PSI. For larger jobs and prolonged spraying a compressor or CO<sub>2</sub> tank is recommended. When air is regulated, pressure should be between 15 to 50 PSI. Normal operating pressure is 30 PSI.

## MIXING PAINT



You can custom mix any color combination you wish. **REMEMBER:** Paints must be compatible...that is, mix enamels with enamels, lacquers, etc. Mix thoroughly. Make sure paint is free of lumps...strain if necessary.

## THINNING

Most jar paints are too heavy to spray. Enamels should be thinned approximately 1 part paint to 1 part thinner, and lacquers approximately 1 part paint to 1-1/2 part thinner. To thin automotive lacquers, consult the spray-directions on the side of the paint container.

## WHEN USING LACQUER

Lacquer dries very quickly. For best results the operation should be continuous, that is, the air brush should not be set down for more than a few moments before resuming spray.

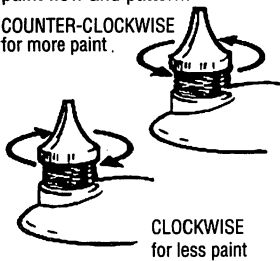
Keep an extra paint jar of thinner handy...remove lacquer jar, attach jar of thinner and spray to clean out any lacquer that may dry in air brush. Also refer to cleaning instructions for additional information.

## TO ADJUST PAINT FLOW

For more paint – turn paint nozzle tip UP (counter-clockwise). For less paint – turn paint nozzle tip DOWN (clockwise).

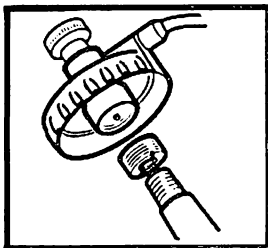
**Important:** paint tip should not be adjusted above middle of hole in air tip. This is position of maximum paint flow – turn paint tip down from mid-point to adjust paint flow and pattern.

COUNTER-CLOCKWISE for more paint



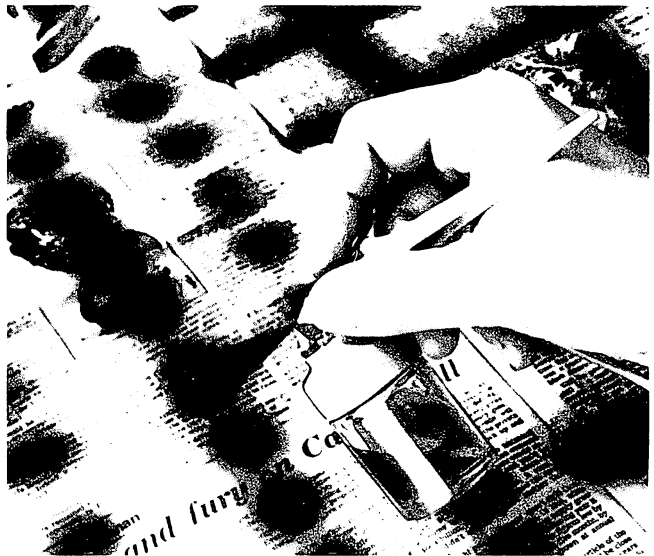
## SPARE TIRE VALVE ADAPTER

A spare tire from the family car can be used as a power source in place of a can of propellant. Simply inflate the tire (must be on a rim) to 40 lbs. of air. Adapter screws are sold through dealers.



## TO OPERATE

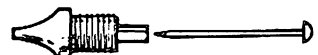
After mixing and thinning paint, fill paint jar about 2/3 full(or less). Attach jar of paint to air brush, turn air on and press trigger. Test your spray on old newspaper or other material, make any necessary spray adjustments, and get the "feel" of your air brush.(Be sure that paint or fumes cannot reach any flame.) Also make sure that there is adequate ventilation.



## TO CLEAN (VERY IMPORTANT)

Unscrew paint jar and empty remaining paint then wipe out with rag or paper towel. Fill jar half full with thinner and spray for five seconds or more. Pour out remaining thinner and again wipe out jar till clean.

Make sure no paint is left around threads of paint nozzle. It can be unscrewed and wiped clean.



If necessary, paint nozzle tip can be unclogged by inserting a straight pin.

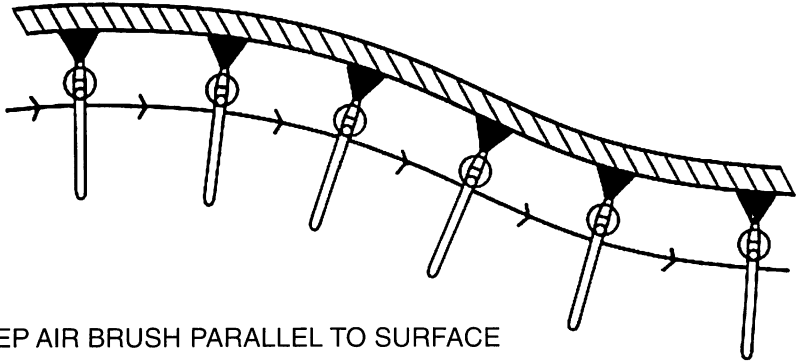
**KEEP YOUR AIR-BRUSH CLEAN – IT WILL WORK BETTER AND LAST LONGER**

## PAINTING PROCEDURE

Prepare object to be painted, marking off any area that should not be painted. (Be sure object is clean and free of dust, grease, etc.) Small objects such as models, etc. should be hung or placed on a pedestal so all areas to be sprayed can be easily reached. (A stand may be fashioned from an ordinary wire coat hanger, or bottle etc.)

Hold nozzle of air brush about 6 inches from surface. Use short strokes, moving air brush constantly at a steady rate, **parallel to the surface**.

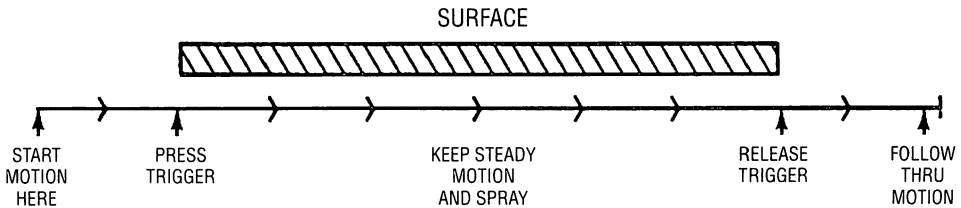
Don't spray too heavy; rather, apply a light coat, let dry then another coat, let dry, etc., until desired coverage is achieved.



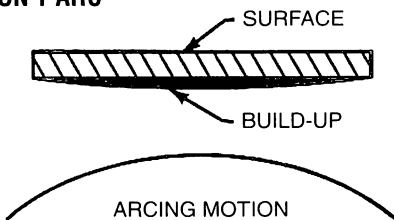
KEEP AIR BRUSH PARALLEL TO SURFACE

## LEARN TO TRIGGER

Best results are achieved by a good constant motion. Start motion before pressing trigger, follow through motion after releasing trigger.



## DON'T ARC

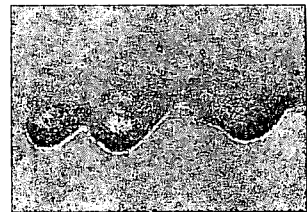


If air brush motion is uneven, paint finish will be uneven.

## THE MOST COMMON PROBLEM

Runs and sags are caused by one or more of the following errors:

1. "Freezing" or forgetting to release trigger at end of stroke.
2. Holding air brush still or moving too slowly.
3. Holding air brush too close to surface.



## TECHNIQUES TO USE

Masking or frisket is used mostly when more than one color is applied. A new frisket is cut for each color and covering any area that should not be sprayed. Frisket paper is available at art supply stores.

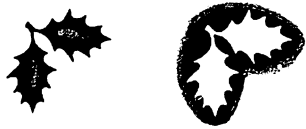
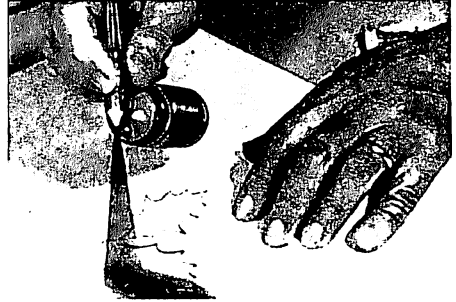


A flat surface mask can be cut from acetate or stiff paper. For a sharp edge, hold mask flat in position. For a softer edge elevate the mask slightly by resting the mask flat in position.



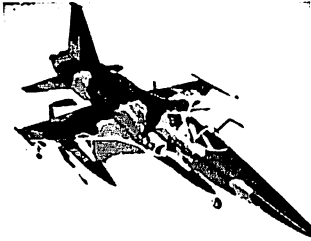
For contour masking (models, ceramics, etc.) use masking tape, scotch tape, or frisket and cut to desired shape, make sure edges are pressed firmly against surface. In addition, office supply stores carry Avery pressure sensitive labels. These labels make excellent masks.

## STENCILS



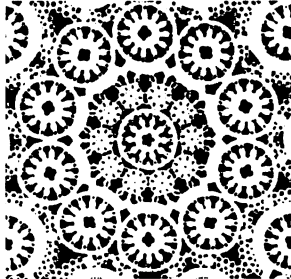
Stencils are used when a design needs to be duplicated. Ideal for posters and decorating. Cut from stiff paper, hold firmly in position and spray starting with edges and work inward. A reverse stencil can also be used, spray along stencil edge.

## TRY THESE SPECIAL EFFECTS



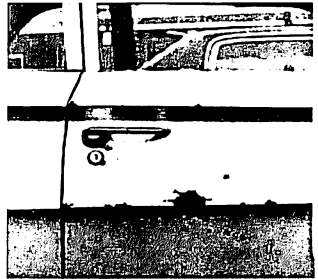
### CAMOUFLAGE

Hard edge by masking, Soft edge freehand.



### PATTERN

Spray thru lace, cheese cloth, etc.



### TOUCH-UPS

Great for custom painting - autos, vans, cycles.

When ordering parts, refer to front cover

*For people who take Hobbies Seriously...*



**BADGER AIR-BRUSH CO.**

9128 W. BELMONT AVE. FRANKLIN PARK, IL 60131



BA 318